

WAAS CH 86707 W21A	APP CRS 208°	Rwy Idg TDZE 616 Apt Elev 616	4997
--	------------------------	---	-------------

RNAV (GPS) RWY 21

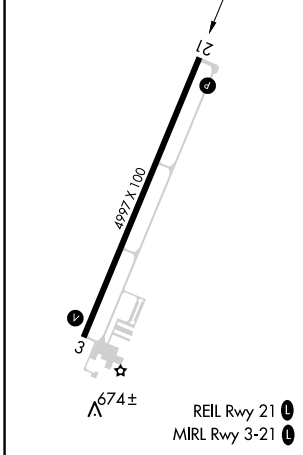
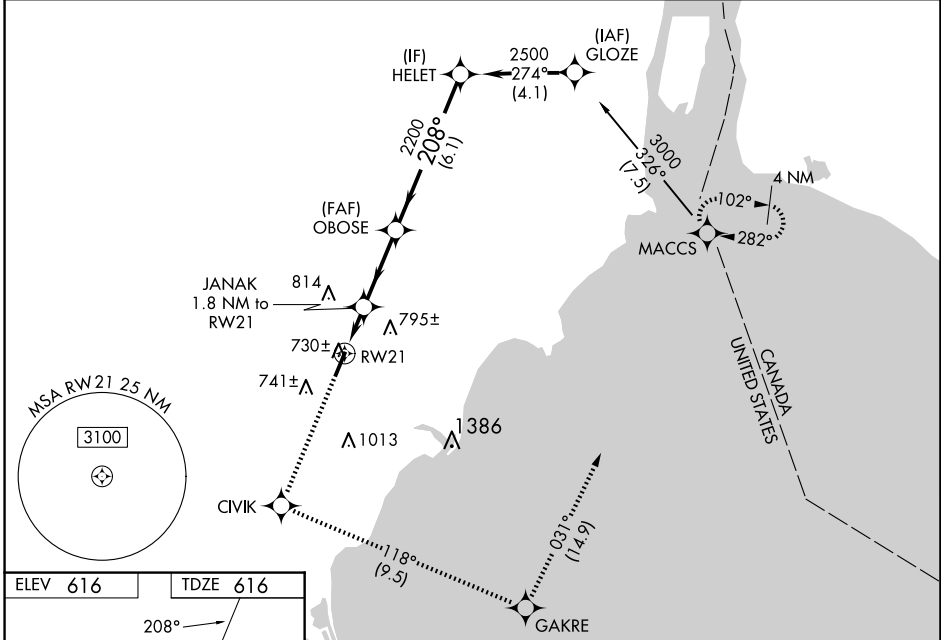
CUSTER (TTF)

RNP APCH - GPS.

⚠ For uncompensated Baro-VNAV systems, LNAV/VNAV NA below -16°C or above 47°C. When local altimeter setting not received, use Detroit Metro Wayne County altimeter setting: increase LPV DA to 1011 feet; increase LNAV/VNAV DA 1054 feet; increase all MDAs 60 feet and visibility LNAV Cat C and Circling Cat C/D ¼ SM. Baro-VNAV and VDP NA when using Detroit Metro Wayne County altimeter setting. Circling to Rwy 3 NA at night.

MISSED APPROACH:
Climb to 3000 direct CIVIK and on track 118° to GAKRE and on track 031° to MACCS and hold.

AWOS-3 119.075	DETROIT APP CON 134.3 363.2	UNICOM 122.7 (CTAF) 0
--------------------------	---------------------------------------	---------------------------------



3000 CIVIK	GAKRE	MACCS	VGSI and RNAV glidepath not coincident (VGSI Angle 3.50/TCH 49).	
↑	tr 118°	tr 031°	HELET	
*LNAV only.		JANAK 1.8 NM to RW21	OBOSE 2200	2500
*0.9 NM RW21 to RW21		*1220	2200	GP 3.00° TCH 42
0.9 NM	0.9 NM	3 NM	6.1 NM	
CATEGORY	A	B	C	D
LPV DA	966-1¼ 350 (400-1¼)			
LNAV/VNAV DA	1009-1½ 393 (400-1½)			
LNAV MDA	980-1 364 (400-1)			980-1¼ 364 (400-1¼)
CIRCLING	1120-1 504 (600-1)	1180-1 564 (600-1)	1380-2¼ 764 (800-2¼)	1380-2½ 764 (800-2½)

EC-1, 23 JAN 2025 to 20 FEB 2025

EC-1, 23 JAN 2025 to 20 FEB 2025