

EC-1, 23 JAN 2025 to 20 FEB 2025

**DEPARTURE ROUTE DESCRIPTION**

**TAKEOFF RUNWAY 3:** Climb on heading 027° or as assigned by ATC, thence....

**TAKEOFF RUNWAY 21:** Climb on heading 208° or as assigned by ATC, thence....

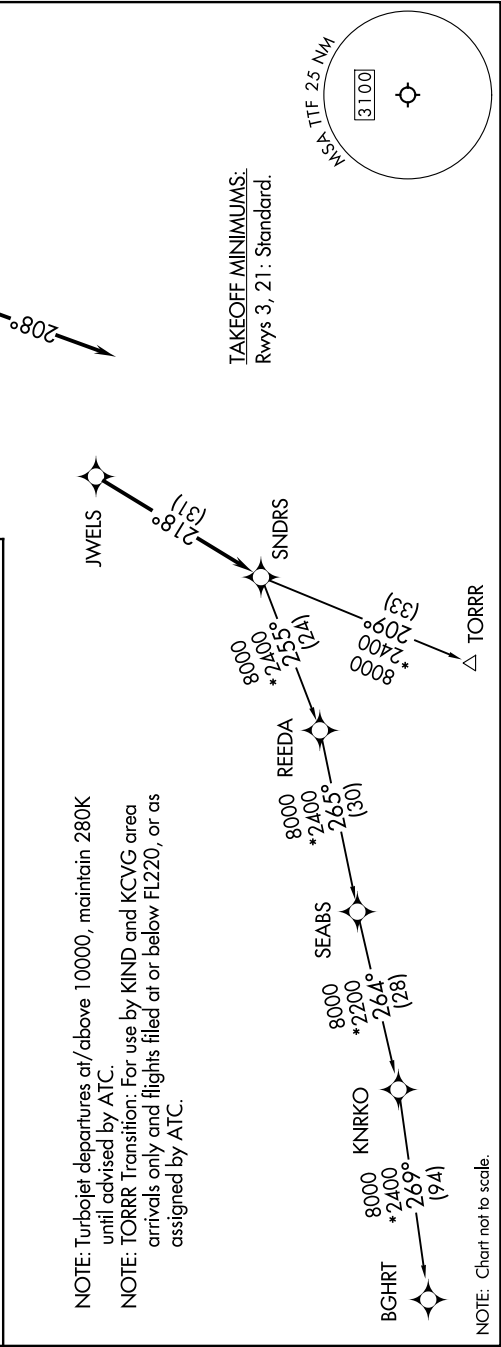
...for RADAR vectors to JWELS, then on track 218° to SNDRS, then on (transition). Maintain ATC assigned altitude, expect filed altitude 10 minutes after departure.

**BGHR T TRANSITION (SNDRS3.BGHR T):**  
TORR T TRANSITION (SNDRS3.TORR T):

**TOP ALTITUDE: ASSIGNED BY ATC**

|                            |
|----------------------------|
| RNAV-1 DME/DME/IRU or GPS. |
| RADAR required.            |

DETROIT DEP CON  
134.3 284.0  
AWOS-3  
119.075  
CTAF  
122.7



EC-1, 23 JAN 2025 to 20 FEB 2025