

LOC/DME I-UVM <b>111.3</b> Chan <b>50</b>	APP CRS <b>305°</b>	Rwy Idg <b>5002</b> TDZE <b>925</b> Apt Elev <b>941</b>
---	------------------------	---

# LOC RWY 31

BLUE RIDGE (MTV)

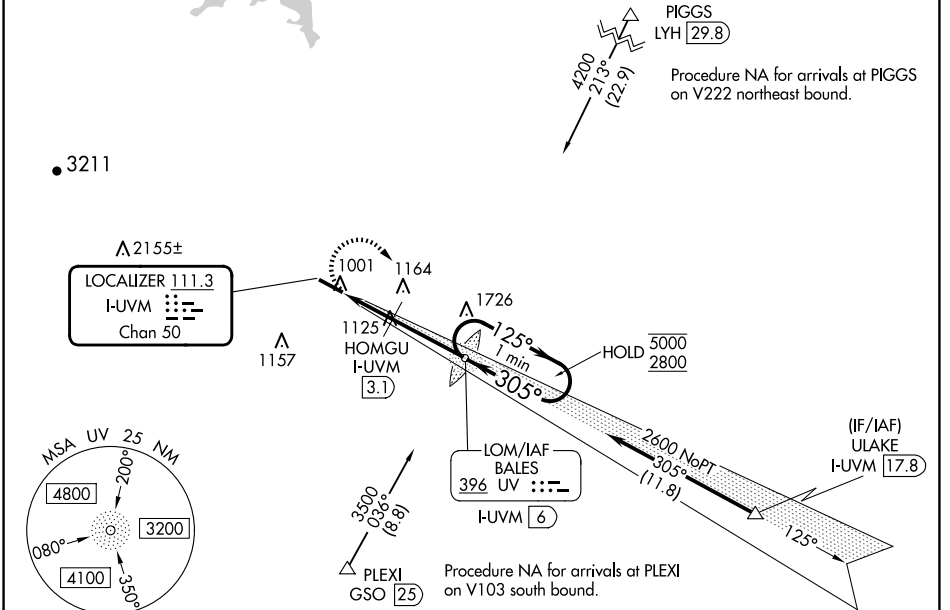
ADF or DME required for procedure entry. ADF required.

**ODALS** MISSED APPROACH: Climbing right turn to 2800 direct BALES LOM/I-UVM & DME and hold, continue climb in hold to 2800.

Rwy 31 helicopter visibility reduction below 3/4 SM NA. For inop ALS while using HOMGU fix minimums, increase Cat C/D visibility to 1 1/2 SM.

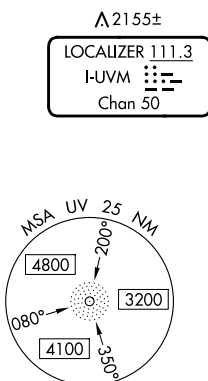
-17°C

AWOS-3 <b>118.45</b>	GREENSBORO APP CON <b>124.35 269.225</b>	CLNC DEL <b>124.85</b>	UNICOM <b>122.7 (CTAF)</b>
-------------------------	---	---------------------------	-------------------------------

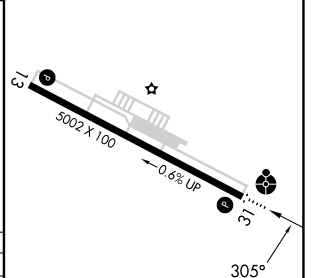
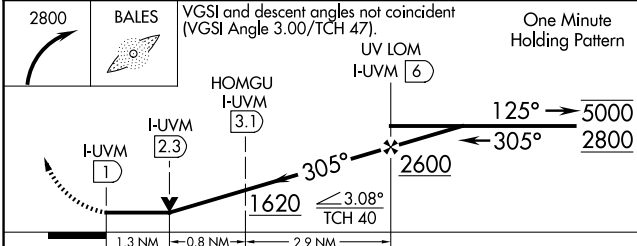


NE-3, 23 JAN 2025 to 20 FEB 2025

NE-3, 23 JAN 2025 to 20 FEB 2025



ELEV 941	TDZE 925
----------	----------



CATEGORY	A	B	C	D
S-31	1620-3/4	695 (700-3/4)	1620-1 1/8	695 (700-1 1/8)
<b>C</b> CIRCLING	1620-1	679 (700-1)	1620-2	859 (900-2 3/4)
HOMGU FIX MINIMUMS				
S-31	1380-3/4	455 (500-3/4)	1380-1 1/8	455 (500-1 1/8)
<b>C</b> CIRCLING	1420-1	1440-1	1540-1 1/2	859 (900-2 3/4)
	479 (500-1)	499 (500-1)	599 (600-1 1/2)	859 (900-2 3/4)

MIRL Rwy 13-31	
REIL Rwys 13 and 31	
FAF to MAP 5 NM	
Knots	60 90 120 150 180
Min:Sec	5:00 3:20 2:30 2:00 1:40