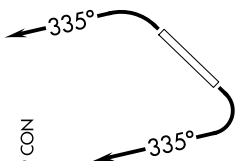


SW-4, 23 JAN 2025 to 20 FEB 2025

**TOP ALTITUDE:  
ASSIGNED BY ATC**

- ATIS\* 118.6
- CLNC DEL 124.8
- GND CON 121.6
- SCOTTSDALE TOWER\* 119.9
- PHOENIX DEP CON 120.7 239.0



**DEPARTURE ROUTE DESCRIPTION**

**TAKEOFF RUNWAY 3:** Climbing left turn heading 335° or as assigned by ATC, thence. . . .

**TAKEOFF RUNWAY 21:** Climbing right turn heading 335° or as assigned by ATC. Thence. . . .

. . . on RADAR vectors to ECLPS, then on track 111° to KATMN, then on (transition). Maintain ATC assigned altitude, expect filed altitude 3 minutes after departure.

**PHASE TRANSITION (KATMN6:PHASE)**

**TAKEOFF MINIMUMS**

Rwy 3: Standard with minimum climb of 445' per NM to 4600.  
 Rwy 21: Standard with minimum climb of 300' per NM to 4600.

NOTE: RNAV 1.

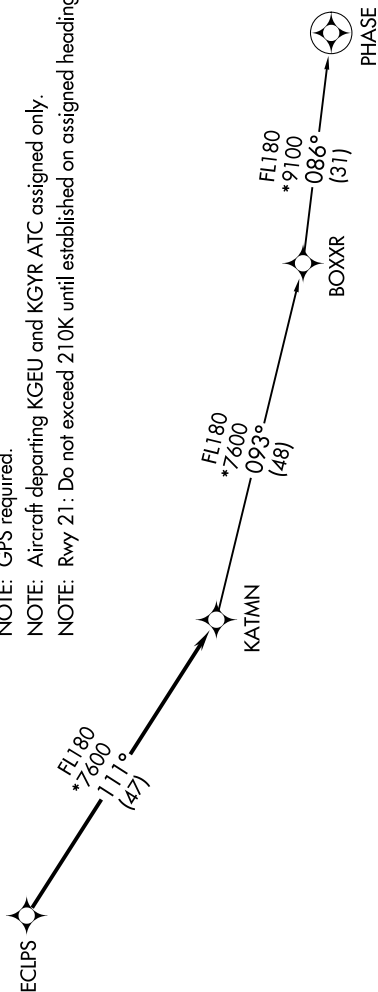
NOTE: Turbojets and turboprops only.

NOTE: RADAR required.

NOTE: GPS required.

NOTE: Aircraft departing KGEU and KGYR ATC assigned only.

NOTE: Rwy 21 : Do not exceed 210K until established on assigned heading.



NOTE: Chart not to scale.

SW-4, 23 JAN 2025 to 20 FEB 2025