

NOTE: RNAV 1.

NOTE: Turbojets and turboprops only.

NOTE: RADAR required.

NOTE: GPS required.

NOTE: SJN TRANSITION for ABQ terminal arrivals only.

NOTE: MAXXO TRANSITION ATC assigned only.

NOTE: Aircraft filing over DEN, RSK, ALS, and points north of ALS, file YOTES DEPARTURE.

NOTE: Aircraft filing over ABQ, CIM, FTJ, and GCK, file LALUZ DEPARTURE.

NOTE: Aircraft filing over ACH, IBL, ONM, CNX, PNH, MMB, TCC, IRW and TXO, file FTHLS DEPARTURE.

NOTE: Aircraft departing KGEU and KGYR ATC assigned only.

NOTE: Rwy 21: Do not exceed 210K until established on assigned heading.

ATIS *

118.6

CLINC DEL

124.8

GND CON

121.6

SCOTTSDALE TOWER *

119.9

PHOENIX DEP CON

120.7 239.0

TOP ALTITUDE:
ASSIGNED BY ATC

ALBUQUERQUE
ABQ

FL180
*10800
059°
(1721)

FL180
*11800
077°
(65)

FL180
*11300
080°
(56)

FL180
*11000
055°
(58)

081FL
0000
*11000
055°
(57)

FL180
*11000
055°
(58)

FL180
*11000
055°
(58)

FL180
*11000
055°
(58)

FL180
*11000
055°
(58)

FL180
*11000
055°
(58)

FL180
*11000
055°
(58)

FL180
*11000
055°
(58)

FL180
*11000
055°
(58)

FL180
*11000
055°
(58)

FL180
*11000
055°
(58)

FL180
*11000
055°
(58)

FL180
*11000
055°
(58)

FL180
*11000
055°
(58)

FL180
*11000
055°
(58)

FL180
*11000
055°
(58)

FL180
*11000
055°
(58)

FL180
*11000
055°
(58)

FL180
*11000
055°
(58)

FL180
*11000
055°
(58)

FL180
*11000
055°
(58)

FL180
*11000
055°
(58)

FL180
*11000
055°
(58)

FL180
*11000
055°
(58)

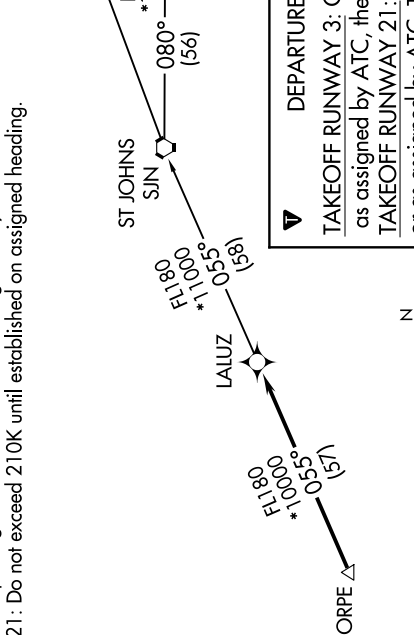
FL180
*11000
055°
(58)

FL180
*11000
055°
(58)

FL180
*11000
055°
(58)

FL180
*11000
055°
(58)

FL180
*11000
055°
(58)



DEPARTURE ROUTE DESCRIPTION

TAKEOFF RUNWAY 3: Climbing left turn heading 335° or as assigned by ATC, thence. . . .

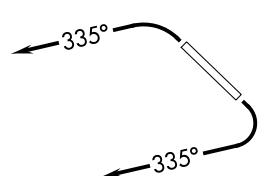
TAKEOFF RUNWAY 21: Climbing right turn heading 335° or as assigned by ATC. Thence. . . .

. . . expect RADAR vectors to FORPE, then on track 055° to LALUZ, then on (transition). Maintain ATC assigned altitude, expect filed altitude 3 minutes after departure.

ALBUQUERQUE TRANSITION (LALUZ6.ABQ)

MAXXO TRANSITION (LALUZ6.MAXXO)

ST JOHNS TRANSITION (LALUZ6.SJN)



TAKEOFF MINIMUMS

Rwy 3: Standard with minimum climb of 445' per NM to 4600.

Rwy 21: Standard with minimum climb of 300' per NM to 4600.

NOTE: Chart not to scale.