

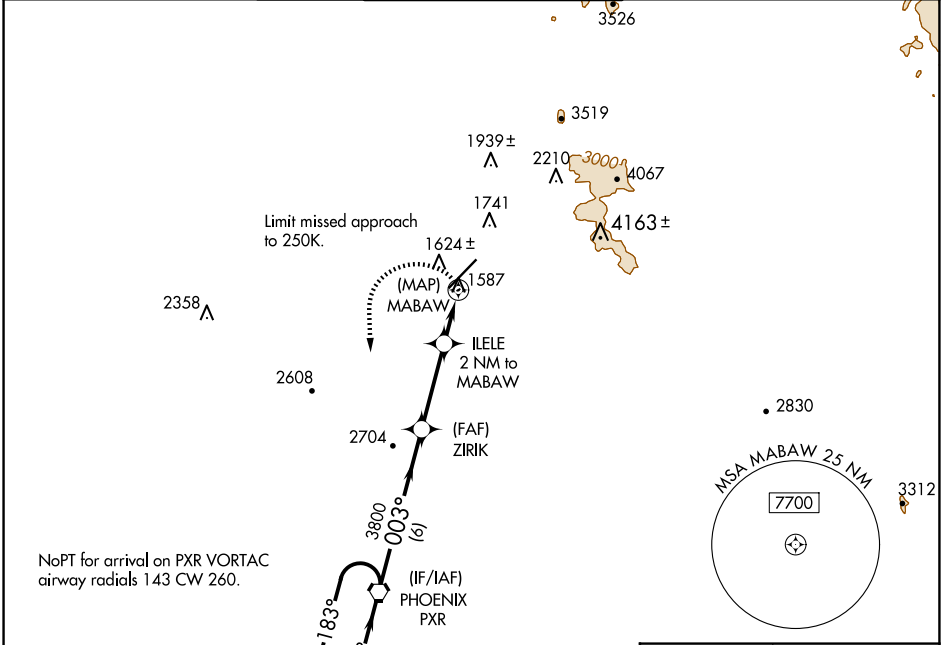
APP CRS 003°	Rwy Idg TDZE Apt Elev	N/A N/A 1510
------------------------	-----------------------------	---

RNAV (GPS)-E SCOTTSDALE (SDL)

⚠ When VGSI inoperative, circling Rwy 21 NA at night. When local altimeter setting not received, use Phoenix Sky Harbor Intl altimeter setting and increase all MDA 100 feet and increase visibility Cat C ¼ SM. DME/DME RNP-0.3 NA.

MISSED APPROACH: Climbing left turn to 4200 direct PXR VORTAC and hold.

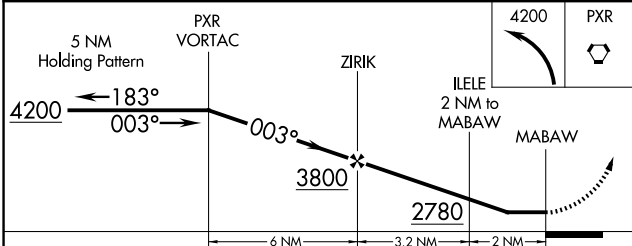
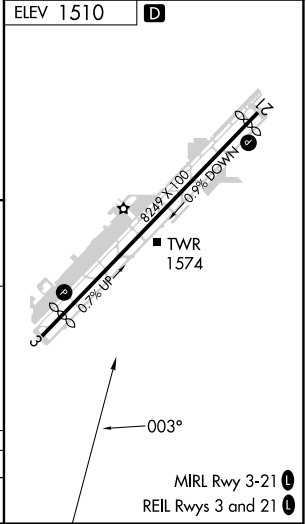
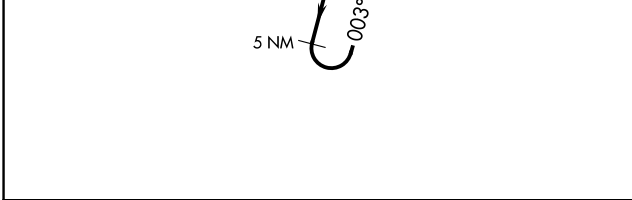
ATIS* 118.6	PHOENIX APP CON 120.7 239.0	SCOTTSDALE TOWER* 119.9 (CTAF) 0	GND CON 121.6	CLNC DEL 124.8
-----------------------	---------------------------------------	--	-------------------------	--------------------------



SW-4, 23 JAN 2025 to 20 FEB 2025

SW-4, 23 JAN 2025 to 20 FEB 2025

NoPT for arrival on PXR VORTAC
airway radials 143 CW 260.



CATEGORY	A	B	C	D
CIRCLING	2140-1	630 (700-1)	2460-2¾ 950 (1000-2¾)	3300-3 1790 (1800-3)

MIRL Rwy 3-21
REIL Rws 3 and 21