

APP CRS	Rwy Idg	<b>7669</b>
<b>212°</b>	TDZE	<b>1507</b>
	Apt Elev	<b>1510</b>

# RNAV (RNP) RWY 21

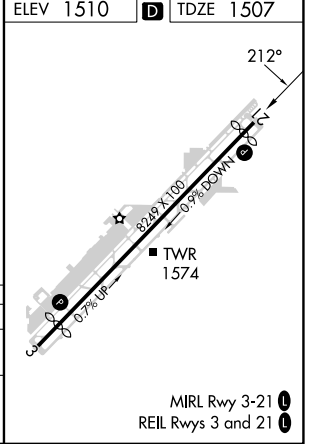
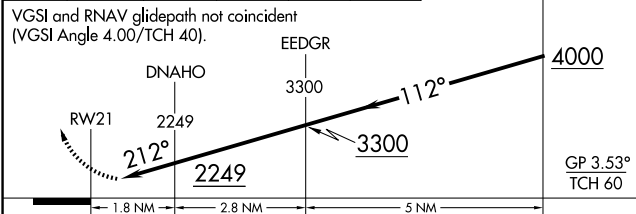
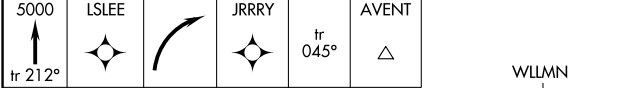
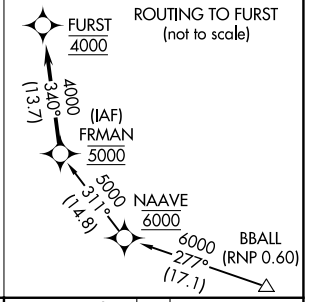
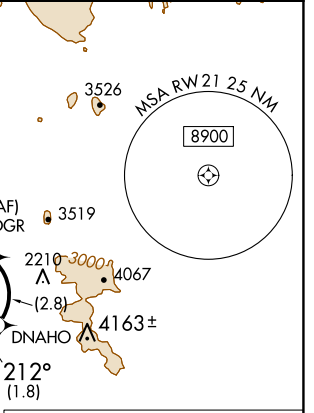
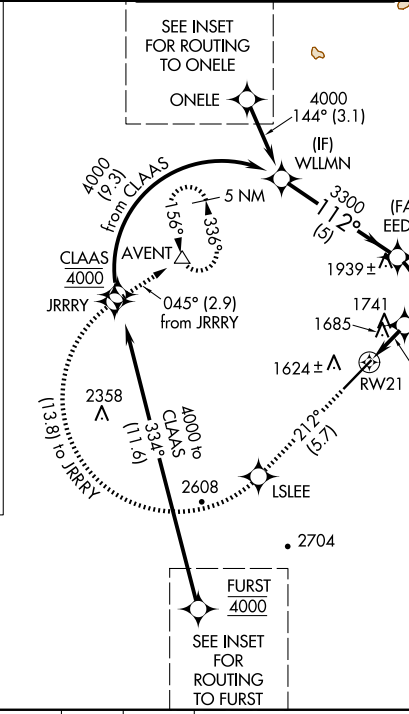
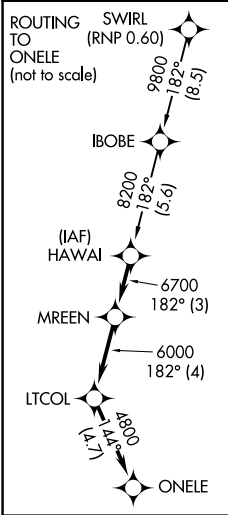
SCOTTSDALE (SDL)

RNP AR APCH - GPS, RF, min RNP 0.60. Authorization required.

▼ For uncompensated Baro-VNAV systems, procedure NA below 1°C or above 54°C. When local altimeter setting not received procedure NA.

MISSED APPROACH: Climb to 5000 on track 212° to LSLEE and right turn to JRRRY and on track 045° to AVENT and hold.

ATIS * <b>118.6</b>	PHOENIX APP CON <b>120.7 239.0</b>	SCOTTSDALE TOWER * <b>119.9 (CTAF) 0</b>	GND CON <b>121.6</b>	CLNC DEL <b>124.8</b>
------------------------	---------------------------------------	---	-------------------------	--------------------------



CATEGORY	A	B	C	D
RNP 0.16 DA	1993-1 3/8	486 (500-1 3/8)		NA

**AUTHORIZATION REQUIRED**

MIRL Rwy 3-21 0  
REIL Rws 3 and 21 0

SW-4, 23 JAN 2025 to 20 FEB 2025

SW-4, 23 JAN 2025 to 20 FEB 2025