

APP CRS	Rwy Idg	7110
032°	TDZE	1470
	Apt Elev	1510

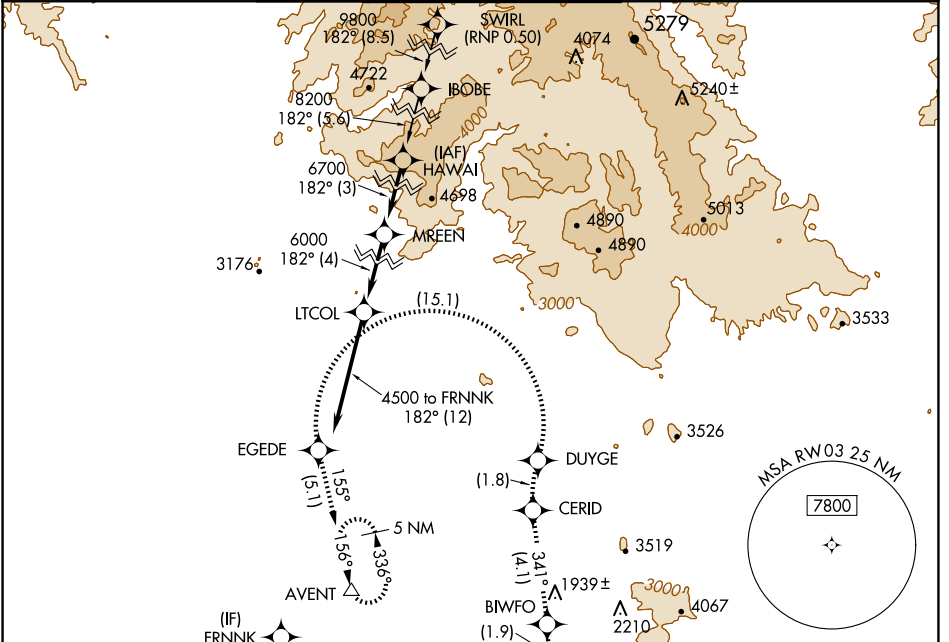
RNAV (RNP) Y RWY 3

SCOTTSDALE (SDL)

RF and GPS required. Visibility reduction by helicopters NA.
 For uncompensated Baro-VNAV systems, procedure NA below 1°C (31°F) or above 54°C (130°F). When local altimeter setting not received procedure NA. Missed approach requires RNP less than 1.0.

MISSED APPROACH: Climb to 5000 via left turn to AFXUR, and via left turn to BIWFO, and via track 341° to CERID, and via right turn to DUYGE, and via left turn to EGEDE, and via track 155° to AVENT and hold.

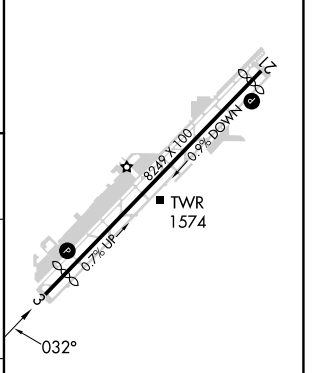
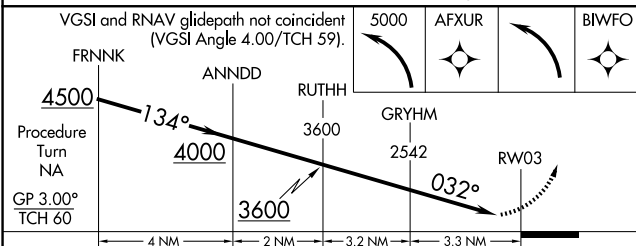
ATIS ★	PHOENIX APP CON	SCOTTSDALE TOWER ★	GND CON	CLNC DEL
118.6	120.7 239.0	119.9 (CTAF) 0	121.6	124.8



SW-4, 23 JAN 2025 to 20 FEB 2025

SW-4, 23 JAN 2025 to 20 FEB 2025

ELEV 1510	D	TDZE 1470
-----------	----------	-----------



FRNKK	ANNDD	RUTHH	GRYHM	RWY 032
4500	4000	3600	2542	
Procedure Turn NA				
GP 3.00°				
TCH 60				
4 NM	2 NM	3.2 NM	3.3 NM	
CATEGORY	A	B	C	D
RNP 0.30 DA	1829-1¼	359 (400-1¼)		NA

AUTHORIZATION REQUIRED

MIRL Rwy 3-21 **0**
 REIL Rwy 3 and 21 **0**