

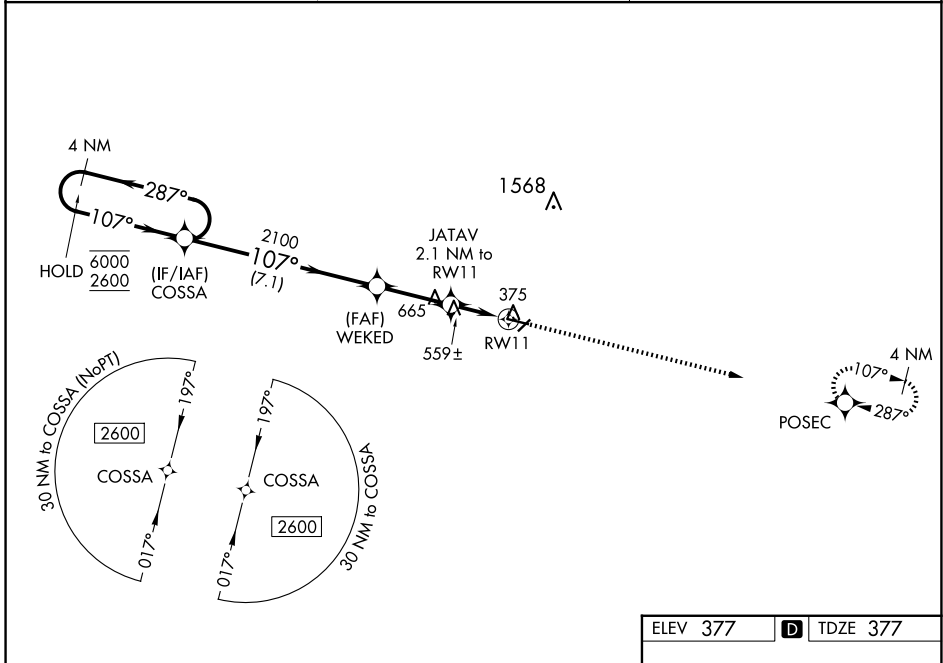
WAAS CH <b>82521</b> <b>W11A</b>	APP CRS <b>107°</b>	Rwy ldg TDZE Apt Elev	<b>4400</b> <b>377</b> <b>377</b>
--	------------------------	-----------------------------	---

# RNAV (GPS) RWY 11

COCHRAN (48A)

RNP APCH - GPS.	MISSED APPROACH: Climb to 2600 direct POSEC and hold.
<p><b>▽</b> Rwy 11 helicopter visibility reduction below 1 SM NA. For uncompensated Baro-VNAV systems, LNAV/VNAV NA below -15°C or above 54°C. <b>▲</b> Straight-in Rwy 11 NA at night, Circling Rwy 5, 11 and 23 NA at night.</p>	

AWOS-3PT <b>120.975</b>	ATLANTA APP CON * <b>124.2 279.6</b>	UNICOM <b>122.8 (CTAF) 0</b>
----------------------------	---	---------------------------------



SE-4, 23 JAN 2025 to 20 FEB 2025

SE-4, 23 JAN 2025 to 20 FEB 2025

4 NM Holding Pattern		VGSI and RNAV glidepath not coincident (VGSI Angle 3.25/TCH 45).		ELEV 377	TDZE 377
<p>GP 3.25° TCH 54</p> <p>6000 ← 287°</p> <p>2600 → 107°</p>		<p>2600 POSEC</p> <p>↑</p>			
<p>COSSA</p> <p>WEKED</p> <p>JATAV 2.1 NM to RW11</p> <p>RW11</p>		<p>2100</p> <p>1160</p>			
7.1 NM		2.7 NM		2.1 NM	
CATEGORY	A	B	C	D	
LPV DA	678-1 301 (400-1)				
LNAV/VNAV DA	690-1 313 (400-1)				
LNAV MDA	820-1 443 (500-1)	820-1 3/8 443 (500-1 3/8)			
<b>C</b> CIRCLING	820-1 443 (500-1)	860-1 483 (500-1)	980-1 3/4 603 (700-1 3/4)	980-2 603 (700-2)	

MIRL Rwy 11-29 0