

ALTUS, OKLAHOMA

AI-5659 (FAA)

23278

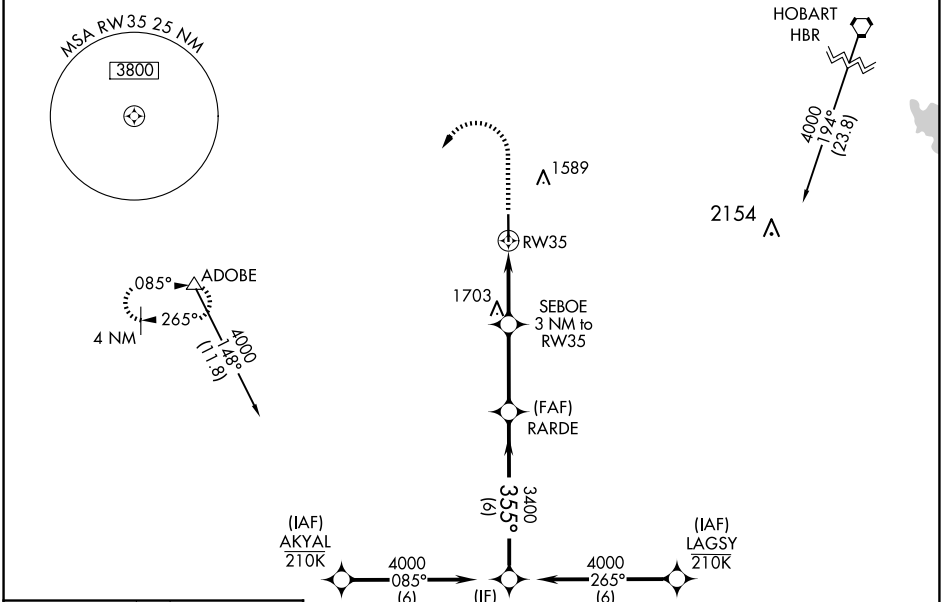
WAAS CH 93914 W35A	APP CRS 355°	Rwy Idg TDZE Apt Elev	5501 1423 1433
--	------------------------	-----------------------------	---

RNAV (GPS) RWY 35

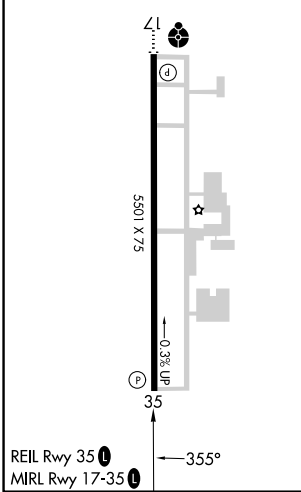
ALTUS/QUARTZ MOUNTAIN RGNL (A.X.S)

RNP APCH.	MISSED APPROACH: Climb to 2100 then climbing left turn to 4000 direct ADOBE and hold.
For uncompensated Baro-VNAV systems, LNAV/VNAV NA below -17°C or above 54°C.	

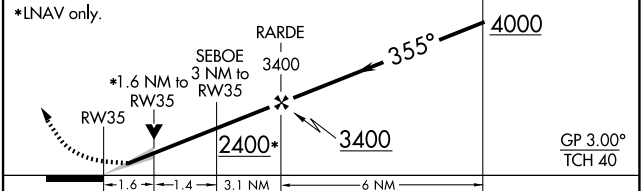
AWOS-3PT 118.825	ALTUS APP CON* 125.1 353.7	UNICOM 122.8 (CTAF) 0
----------------------------	--------------------------------------	---------------------------------



ELEV 1433	TDZE 1423
-----------	-----------



2100 4000 ADOBE
 VGSI and RNAV glidepath not coincident (VGSI Angle 3.00/TCH 40).
 *LNAV only.



CATEGORY	A	B	C	D
LPV DA	1673-7/8 250 (300-7/8)			NA
LNAV/VNAV DA	1673-7/8 250 (300-7/8)			NA
LNAV MDA	1960-1	537 (600-1)	1960-1 1/2 537 (600-1 1/2)	NA
C CIRCLING	1960-1	527 (600-1)	2020-1 1/2 587 (600-1 1/2)	NA

ALTUS, OKLAHOMA
Amdt 1A 16JUL20

34°42'N-99°20'W

ALTUS/QUARTZ MOUNTAIN RGNL (A.X.S) RNAV (GPS) RWY 35

SC-1, 23 JAN 2025 to 20 FEB 2025

SC-1, 23 JAN 2025 to 20 FEB 2025