

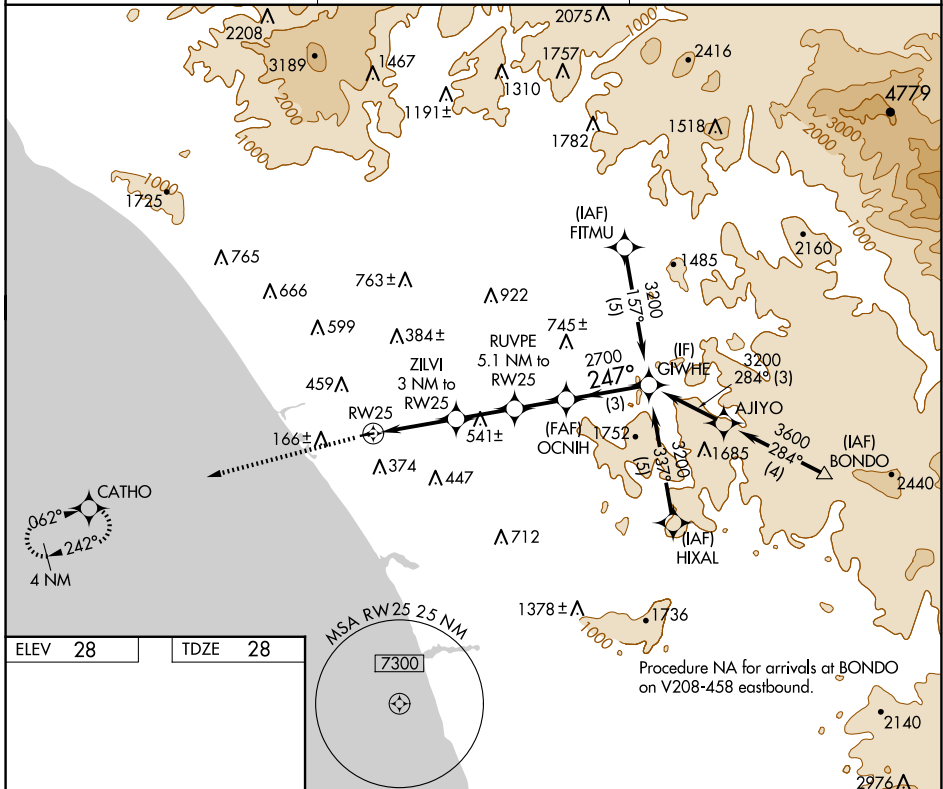
APP CRS 247°	Rwy ldg 2712
	TDZE 28
	Apt Elev 28

RNAV (GPS) RWY 25

BOB MAXWELL MEML AIRFIELD (OKB)

RNP APCH-GPS.	MISSED APPROACH: Climb to 2000 direct CATHO and hold.
<p>▼ Circling Rwy 7 NA at night.</p> <p>▲ Rwy 25 helicopter visibility reduction below 3/4 SM NA.</p>	

ASOS 127.8	SOCAL APP CON 127.3 323.0	UNICOM 122.725 (CTAF) 0
----------------------	-------------------------------------	-----------------------------------



ELEV 28	TDZE 28				
		<p>Procedure NA for arrivals at BONDO on V208-458 eastbound.</p>			
<p>2000 CATHO</p>		<p>RUVPE 5.1 NM to RW25</p> <p>ZILVI 3 NM to RW25</p> <p>OCNIH</p> <p>GWHE</p> <p>2000 2700 3200</p> <p>2.2 NM to RW25</p> <p>0.8</p> <p>2.1 NM</p> <p>1.9 NM</p> <p>3 NM</p> <p>3.52° TCH 55</p>			
CATEGORY	A	B	C	D	
LNAV MDA	920-1¼	892 (900-1¼)	NA		
CIRCLING	920-1¼	892 (900-1¼)	NA		

SW-3, 23 JAN 2025 to 20 FEB 2025

SW-3, 23 JAN 2025 to 20 FEB 2025