

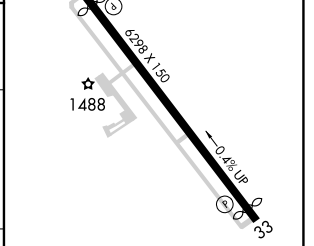
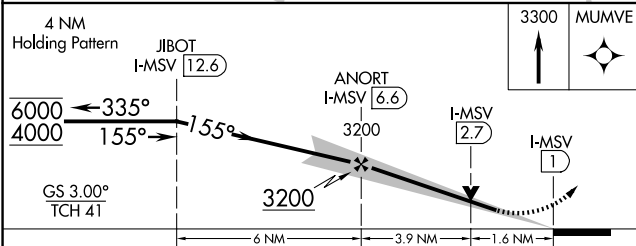
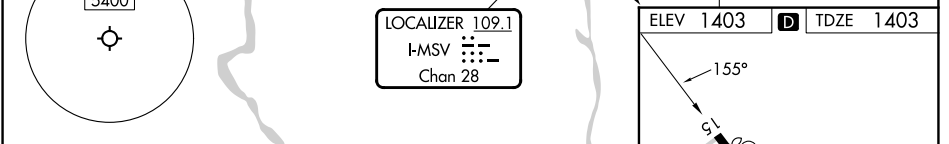
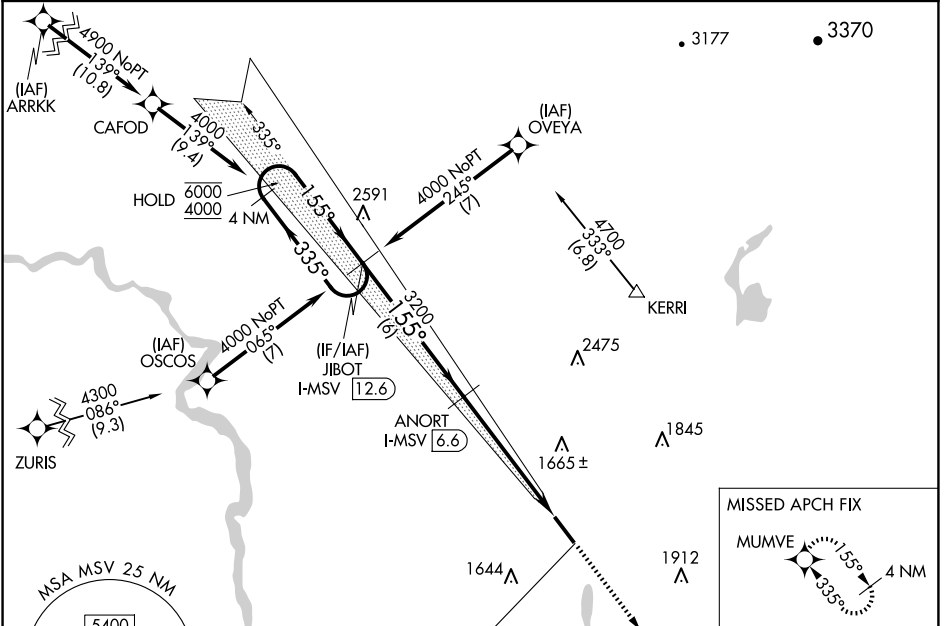
LOC/DME I-MSV 109.1 Chan 28	APP CRS 155°	Rwy Ldg 5900 TDZE 1403 Apt Elev 1403
---	------------------------	---

ILS or LOC RWY 15

SULLIVAN COUNTY INTL (MSV)

RNP APCH - GPS. ▼ VDP NA when using New York Stewart Intl altimeter setting. When local altimeter setting not received, use New York Stewart Intl altimeter setting; increase S-ILS 15 DA to 1858 feet and all visibilities ½ SM; increase all MDAs 220 feet and S-LOC 15 visibility Cat B, C and D ¾ SM, and Circling Cat B, C and D visibilities ¾ SM.	MISSED APPROACH: Climb to 3300 direct MUMVE and hold.
---	---

AWOS-3PT 124.725	NEW YORK APP CON 132.75 363.1	CLNC DEL 121.6	UNICOM 122.8 (CTAF) 0
----------------------------	---	--------------------------	---------------------------------



CATEGORY	A	B	C	D
S-ILS 15		1653-¾	250 (300-¾)	
S-LOC 15	1960-1	557 (600-1)	1960-1¾	557 (600-1¾)
C CIRCLING	1960-1	557 (600-1)	2020-1¾	2180-2½
			617 (700-1¾)	777 (800-2½)

REIL Rwy 15 and 33 0					
HIRL Rwy 15-33 0					
FAF to MAP 5.5 NM					
Knots	60	90	120	150	180
Min:Sec	5:30	3:40	2:45	2:12	1:50

NE-2, 23 JAN 2025 to 20 FEB 2025

NE-2, 23 JAN 2025 to 20 FEB 2025