

WAAS CH 42516 W36A	APP CRS 005°	Rwy Idg TDZE Apt Elev	4756 1197 1197
--	------------------------	-----------------------------	---

RNAV (GPS) RWY 36

LE MARS MUNI (L.R.J)

RNP APCH - GPS.

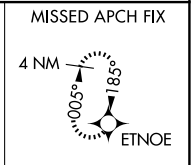
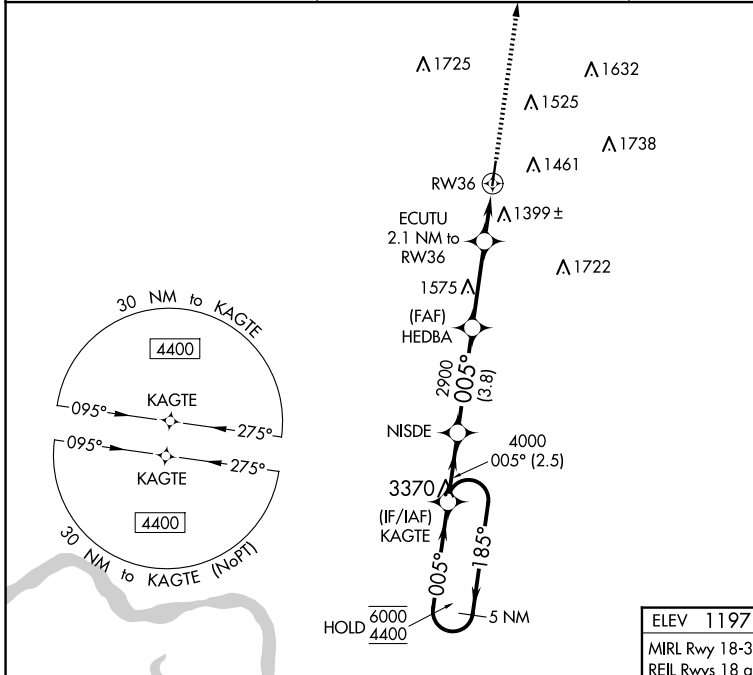
⚠ Rwy 36 helicopter visibility reduction below 1 SM NA. For uncompensated Baro-VNAV systems, LNAV/VNAV NA below -24°C or above 54°C.

MISSED APPROACH: Climb to 4000 direct ETNOE and hold.

AWOS-3P
120.975

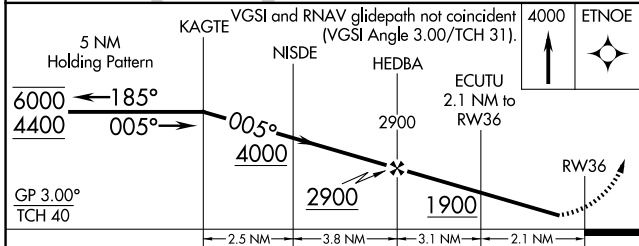
SIOUX CITY APP CON *
124.6 307.0

UNICOM
122.8 (CTAF) 0



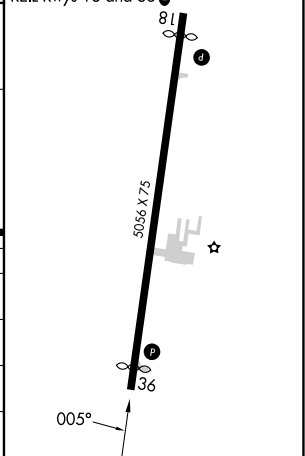
NC-3, 23 JAN 2025 to 20 FEB 2025

NC-3, 23 JAN 2025 to 20 FEB 2025



ELEV 1197	TDZE 1197
-----------	-----------

MIRL Rwy 18-36
REIL Rwy 18 and 36



CATEGORY	A	B	C	D
LPV DA	1469-1 272 (300-1)			NA
LNAV/VNAV DA	1723-1 $\frac{7}{8}$ 526 (600-1 $\frac{7}{8}$)			NA
LNAV MDA	1660-1 463 (500-1)		1660-1 $\frac{3}{8}$ 463 (500-1 $\frac{3}{8}$)	NA
C CIRCLING	1760-1 563 (600-1)	1780-1 583 (600-1)	1840-1 $\frac{3}{4}$ 643 (700-1 $\frac{3}{4}$)	NA