

WAAS CH <b>78208</b> <b>W35A</b>	APP CRS <b>354°</b>	Rwy Idg TDZE Apt Elev	<b>5001</b> <b>880</b> <b>901</b>
--	------------------------	-----------------------------	---

# RNAV (GPS) RWY 35

TRI-CITY (PPF)

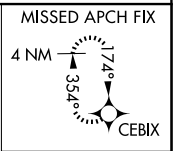
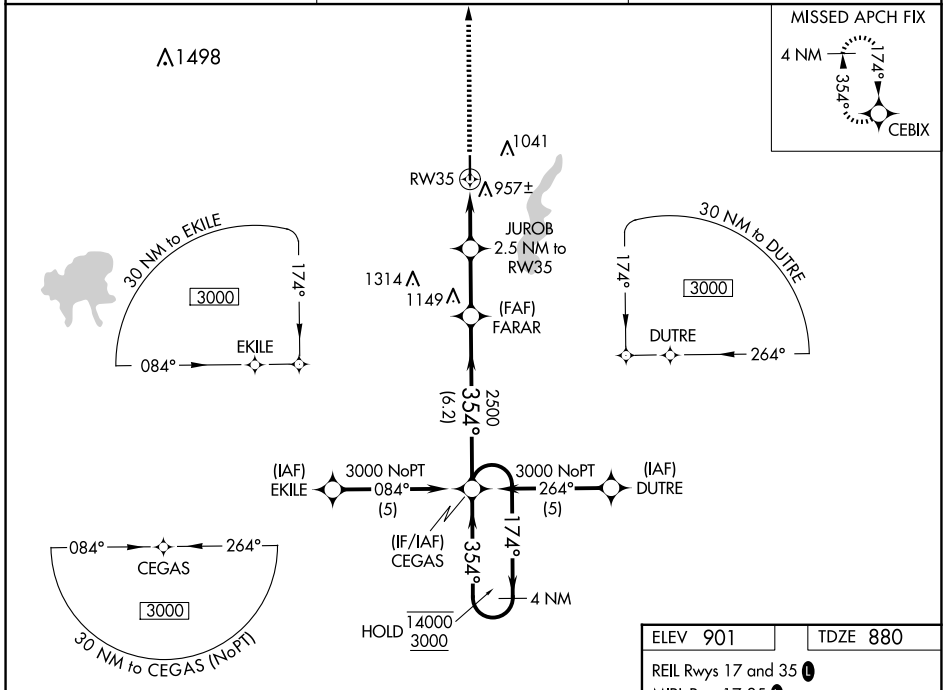
RNP APCH.  
 Procedure NA at night. Rwy 35 helicopter visibility reduction below 1 SM NA. For uncompensated Baro-VNAV systems, LNAV/VNAV NA below -16°C or above 54°C.

MISSED APPROACH: Climb to 3000 direct CEBIX and hold.

ASOS  
**118.175**

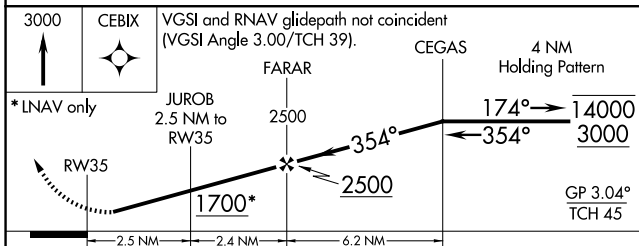
KANSAS CITY CENTER  
**128.6 282.325**

UNICOM  
**123.0 (CTAF) 0**



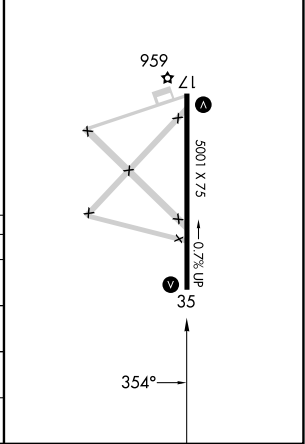
NC-2, 23 JAN 2025 to 20 FEB 2025

NC-2, 23 JAN 2025 to 20 FEB 2025



ELEV 901	TDZE 880
----------	----------

REIL Rwy 17 and 35  
MIRL Rwy 17-35



CATEGORY	A	B	C	D
LPV DA	1130-1	250 (300-1)		NA
LNAV/VNAV DA	1174-1	294 (300-1)		NA
LNAV MDA	1300-1	420 (400-1)	1300-1¼ 420 (400-1¼)	NA
CIRCLING	1420-1 519 (600-1)	1440-1 539 (600-1)	1440-1½ 539 (600-1½)	NA