

RNAV (GPS) RWY 20

ODESSA-SCHLEMEYER FLD (ODO)

APP CRS	Rwy Idg	5703
202°	TDZE	3004
	Apt Elev	3004

RNP APCH.

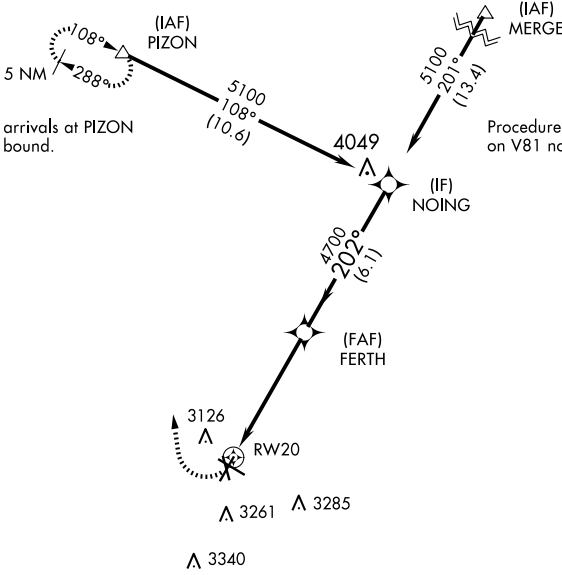
▼ Circling NA south of Rws 2 and 34. When local altimeter setting not received use Midland Intl Air and Space Port altimeter setting and increase all MDAs 60 feet and increase Circling Cat C visibility ¼ SM. Rwy 20 helicopter visibility reduction below 1 SM NA.

MISSED APPROACH:
Climbing right turn to 5100 direct PIZON and hold.

ASOS 119.275	MIDLAND APP CON ★ 124.6 256.875	CLNC DEL 121.7	UNICOM 123.0 (CTAF) ①
------------------------	---	--------------------------	---------------------------------

Procedure NA for arrivals at PIZON on V68 northwest bound.

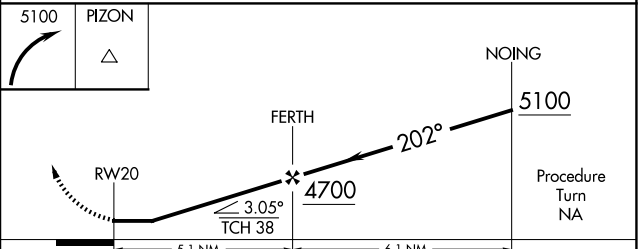
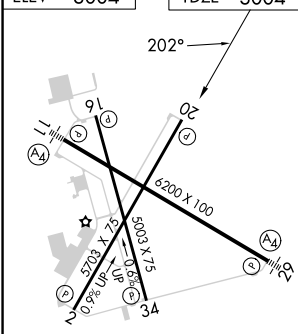
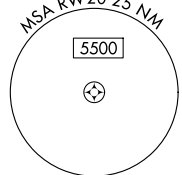
Procedure NA for arrivals at MERGE on V81 northbound.



SC-3, 23 JAN 2025 to 20 FEB 2025

SC-3, 23 JAN 2025 to 20 FEB 2025

ELEV	3004	TDZE	3004
------	------	------	------



CATEGORY	A	B	C	D
LNAV MDA	3460-1	456 (500-1)	3460-1⅓ 456 (500-1⅓)	3460-1½ 456 (500-1½)
CIRCLING	3460-1	456 (500-1)	3600-1½ 596 (600-1½)	3600-2 596 (600-2)