

KERRVILLE, TEXAS

AL-5690 (FAA)

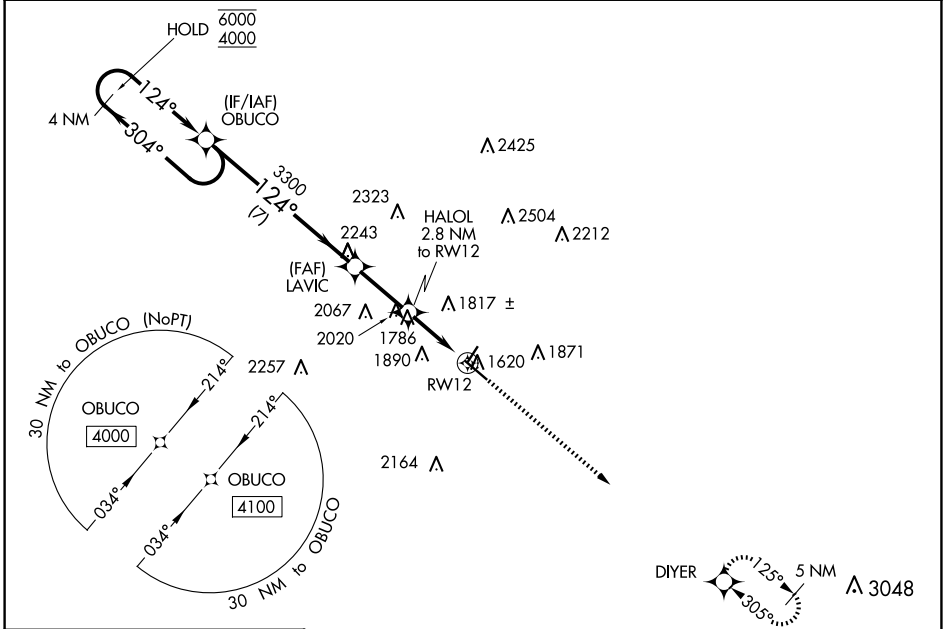
23054

WAAS CH 45628 W12A	APP CRS 124°	Rwy Idg TDZE Apt Elev	5313 1586 1617
---------------------------------	------------------------	-----------------------------	---

RNAV (GPS) RWY 12

KERRVILLE MUNI/LOUIS SCHREINER FLD (ERV)

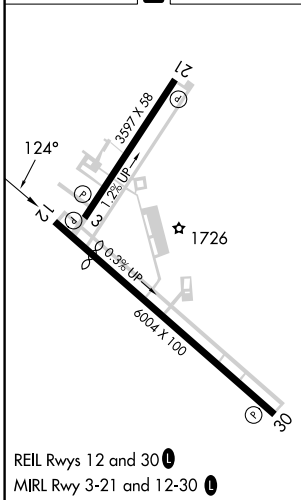
RNP APCH.			MISSED APPROACH: Climb to 4100 direct DIYER and hold.
<p>▲ For uncompensated Baro-VNAV systems, LNAV/VNAV NA below -18°C or above 54°C.</p>			
AWOS-3 118.125	HOUSTON CENTER 134.95 269.4	CLNC DEL 134.95	UNICOM 122.7 (CTAF) 0



SC-3, 23 JAN 2025 to 20 FEB 2025

SC-3, 23 JAN 2025 to 20 FEB 2025

ELEV 1617 TDZE 1586



4 NM Holding Pattern	4100	DIYER		
OBUCO				
6000 ← 304°	← 124°	← 124°		
4000	LAVIC 3300	HALOL 2.8 NM to RW12		
GP 3.00° TCH 40	3300	* 2500		
	7 NM	2.5 NM		
	1.5 NM	1.3 NM		
	* 1.3 NM to RW12	RW12		
CATEGORY	A	B	C	D
LPV DA	1836-1		250 (300-1)	
LNAV/VNAV DA	1936-1½		350 (400-1½)	
LNAV MDA	2040-1	454 (500-1)	2040-1¾	454 (500-1¾)
CIRCLING	2320-1 703 (800-1)	2340-1 723 (800-1)	2380-2¼ 763 (800-2¼)	2540-3 923 (1000-3)

KERRVILLE, TEXAS
Amdt 1B 30JAN20

KERRVILLE MUNI/LOUIS SCHREINER FLD (ERV)
29°59' N-99°05' W

RNAV (GPS) RWY 12