

APP CRS	Rwy Idg	<b>4323</b>
<b>206°</b>	TDZE	<b>946</b>
	Apt Elev	<b>946</b>

# RNAV (GPS) RWY 20

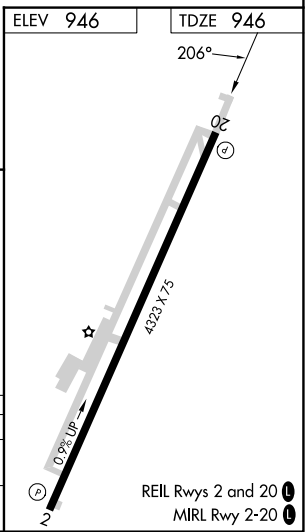
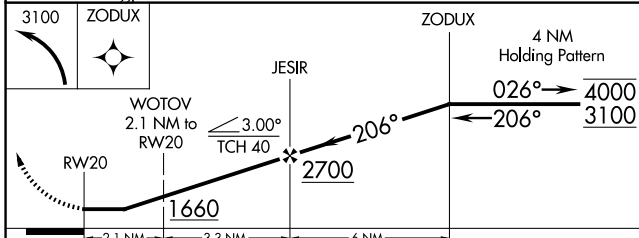
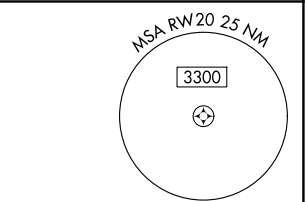
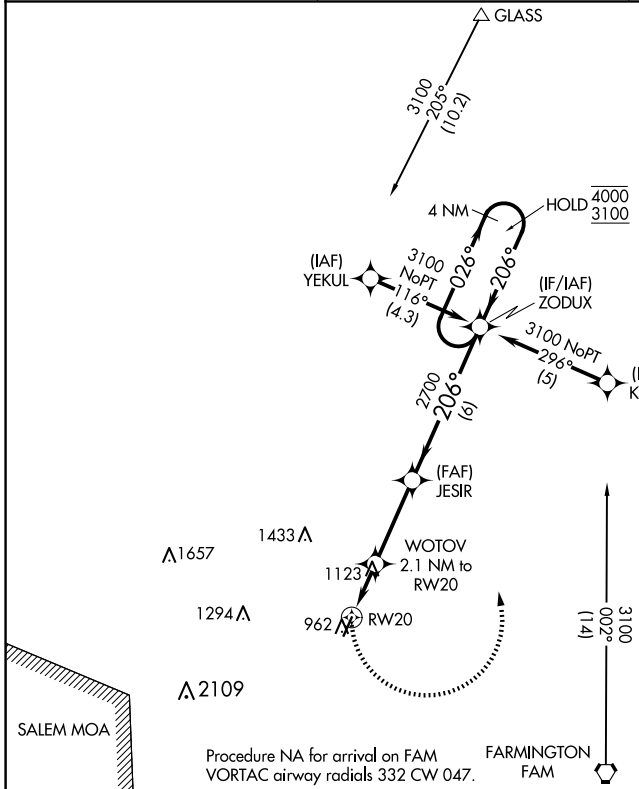
FARMINGTON RGNL (FAM)

RNP APCH - GPS.

**▼** Rwy 20 helicopter visibility reduction below 1 SM NA. Straight-in Rwy 20 NA at night, Circling Rwy 20 NA at night. When local altimeter setting not received, use Sparta altimeter setting and increase all MDAs 160 feet.

MISSED APPROACH: Climbing left turn to 3100 direct ZODUX and hold.

AWOS-3PT <b>119.275</b>	KANSAS CITY CENTER <b>127.475 346.275</b>	UNICOM <b>122.8 (CTAF)</b>
----------------------------	----------------------------------------------	-------------------------------



CATEGORY	A	B	C	D
LNVA MDA	1380-1	434 (500-1)		NA
<b>C</b> CIRCLING	1460-1 514 (600-1)	1500-1 554 (600-1)		NA

NC-3, 23 JAN 2025 to 20 FEB 2025

NC-3, 23 JAN 2025 to 20 FEB 2025