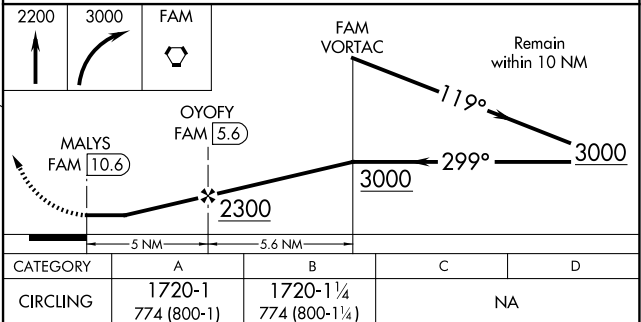
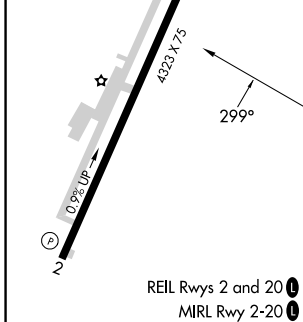
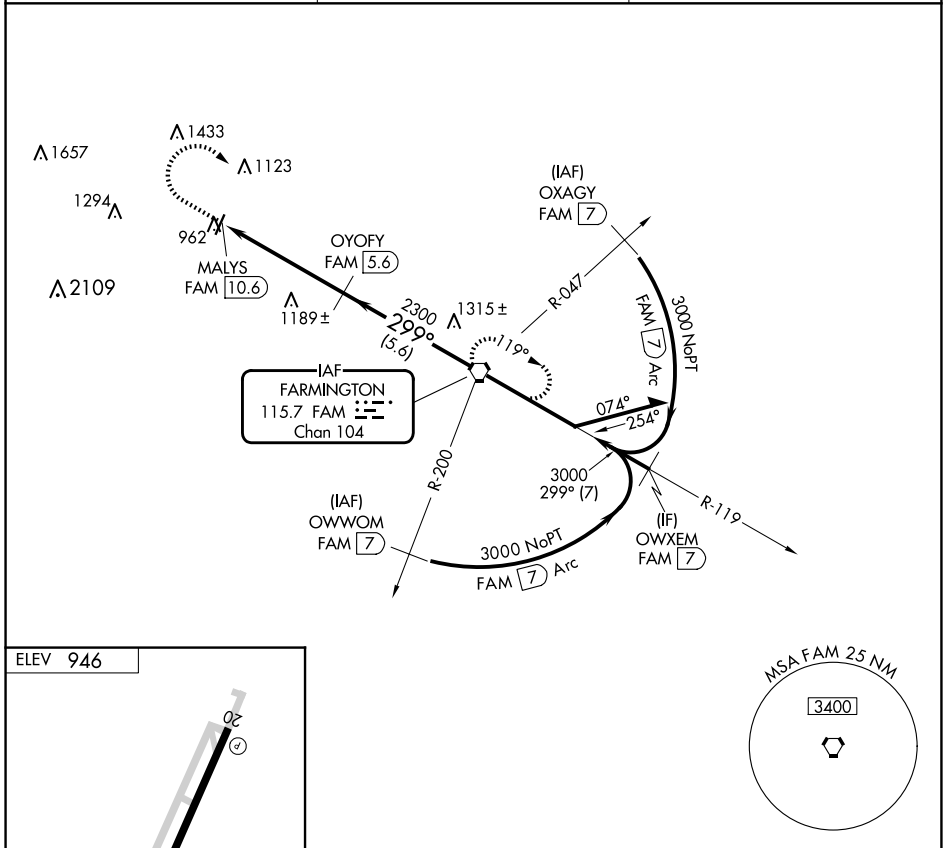


VORTAC FAM <b>115.7</b> Chan <b>104</b>	APP CRS <b>299°</b>	Rwy Idg TDZE Apt Elev <b>N/A</b> <b>N/A</b> <b>946</b>
---	------------------------	---

**VOR/DME-A**  
FARMINGTON RGNL (FAM)

<p><b>NA</b> Circling to Rwy 20 NA at night. When local altimeter setting not received, use Sparta altimeter setting and increase all MDA 160 feet and Cat A visibility ¼ mile.</p>	<p><b>MISSED APPROACH:</b> Climb to 2200 then climbing right turn to 3000 direct FAM VORTAC and hold.</p>
---	---

AWOS-3PT <b>119.275</b>	KANSAS CITY CENTER <b>127.475 346.275</b>	UNICOM <b>122.8 (CTAF) 0</b>
----------------------------	--	---------------------------------



NC-3, 23 JAN 2025 to 20 FEB 2025

NC-3, 23 JAN 2025 to 20 FEB 2025