

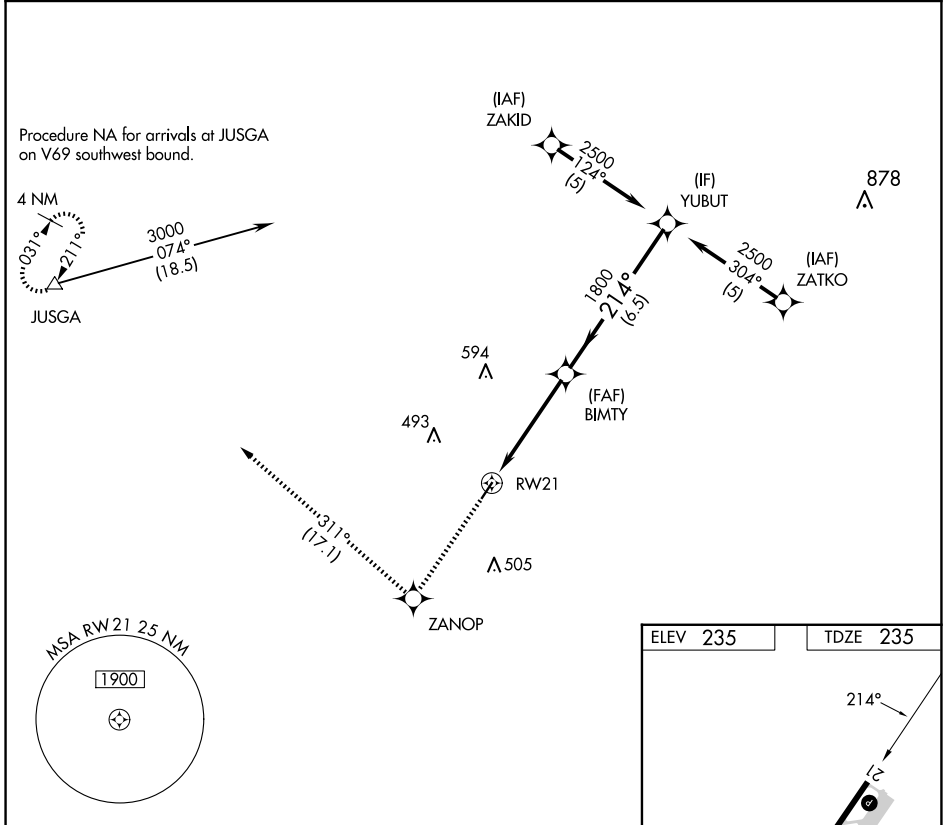
APP CRS	Rwy Idg	3829
214°	TDZE	235
	Apt Elev	235

RNAV (GPS) RWY 21

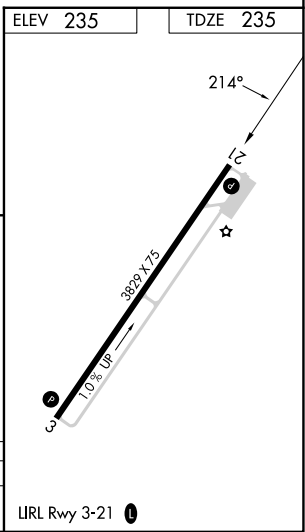
WARREN MUNI (3M9)

RNP APCH - GPS.	MISSED APPROACH: Climb to 3000 direct ZANOP and on track 311° to JUSGA and hold.
<p>▼ Use Monticello altimeter setting.</p> <p>▲ NA Procedure NA at night.</p>	

LLQ ASOS 133.325	MEMPHIS CENTER 135.875 269.35	CTAF 122.9
----------------------------	---	----------------------



3000	ZANOP	tr 311°	JUSGA	VGSI and descent angles not coincident (VGSI Angle 3.50/ TCH 40).	YUBUT
RW21		BIMTY		YUBUT	
4.7 NM		6.5 NM		2500	
		1800		214°	
		$\leq 3.04^\circ$		TCH 45	
CATEGORY	A	B	C	D	
LNAV MDA	720-1	485 (500-1)	720-1½ 485 (500-1½)	NA	



SC-1, 23 JAN 2025 to 20 FEB 2025

SC-1, 23 JAN 2025 to 20 FEB 2025