

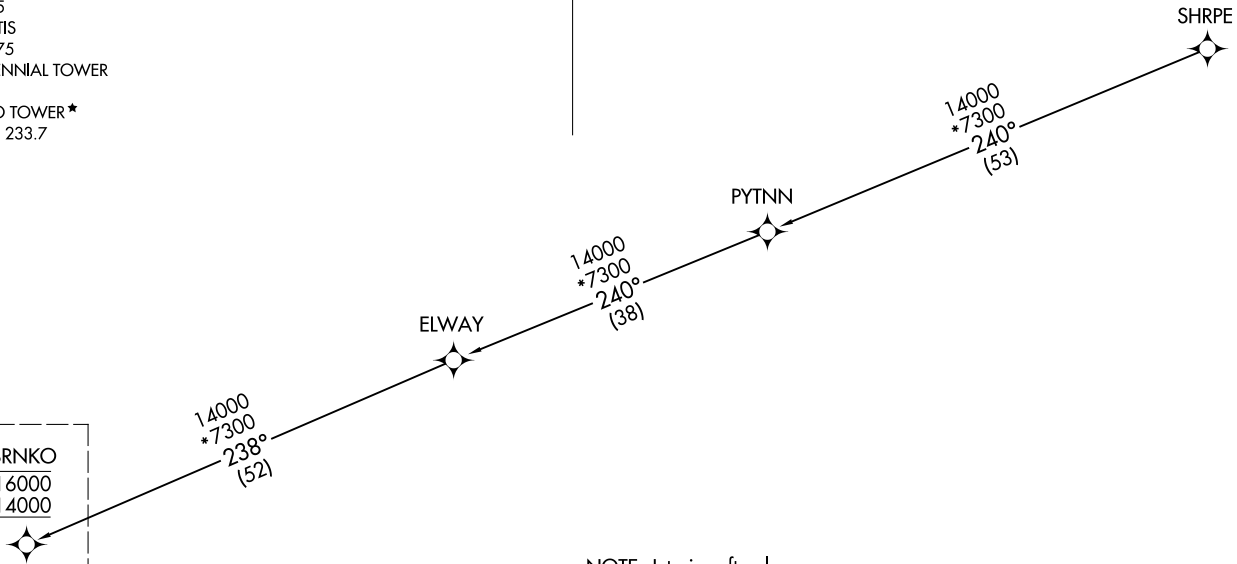
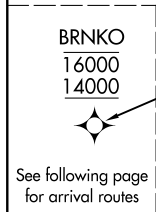
BRNKO THREE ARRIVAL (RNAV) (BRNKO.BRNKO3) 16MAY24

BRNKO THREE ARRIVAL (RNAV) Transition Routes

DENVER, COLORADO

DENVER APP CON
127.05 363.25
APA ATIS
120.3
BJC ATIS
126.25
FNL ATIS
135.075
CENTENNIAL TOWER
118.9
METRO TOWER*
118.6 233.7

RNAV 1 - GPS.
RADAR required.



NOTE: Jet aircraft only.
NOTE: Aircraft landing Centennial Airport do not file - to be assigned by ATC.
NOTE: GPS required.

NOTE: Chart not to scale.

SHRPE TRANSITION (SHRPE.BRNKO3)

(CONTINUED ON FOLLOWING PAGE)

(BRNKO.BRNKO3) 24137

AL-5715 (FAA)
BRNKO THREE ARRIVAL (RNAV) Transition Routes

DENVER, COLORADO

(BRNKO.BRNKO3) 24137

AL-5715 (FAA)

BRNKO THREE ARRIVAL (RNAV) Arrival Routes

DENVER, COLORADO

DENVER APP CON
 127.05 363.25
 APA ATIS
 120.3
 BJC ATIS
 126.25
 FNL ATIS
 135.075
 CENTENNIAL TOWER
 118.9
 METRO TOWER*
 118.6 233.7

RNAV 1 - GPS.
RADAR required.

BRNKO
 16000
 14000

ORRNG
 9000
 Ldg KFNL and KGXY

BLTZZ
 12000 250K

PICKK
 14000

BWLIN
 10000

GILL
 GLL

NORTHERN
 COLORADO
 RGNL

GREELEY-WELD COUNTY

REDZN
 10000

VANCE
 BRAND

HBALL
 9000

Ldg KLMO

PYDRT
 9000

Ldg KBJC

KAYOO

WOLTS

ROCKY
 MOUNTAIN
 METRO

NOTE: Jet aircraft only.
 NOTE: Aircraft landing Centennial Airport do not file - to be assigned by ATC.
 NOTE: GPS required.

AAYES
 9000

Ldg KAPA

LOWRE

CENTENNIAL

(CONTINUED ON FOLLOWING PAGE)

NOTE: Chart not to scale.

BRNKO THREE ARRIVAL (RNAV) Arrival Routes

DENVER, COLORADO

(BRNKO.BRNKO3) 16MAY24

SW-1, 23 JAN 2025 to 20 FEB 2025

SW-1, 23 JAN 2025 to 20 FEB 2025

ARRIVAL ROUTE DESCRIPTION

LANDING KAPA: From BRNKO on track 247° to cross PICKK at or below 14000, then on track 247° to cross BLTZZ at 12000 and at or below 250K, then on track 247° to cross BWLIN at 10000, then on track 189° to cross REDZN at 10000, then on track 176° to cross PYDRT at 9000, then on track 176° to cross AAYES at 9000, then on track 150°. Expect RADAR vectors to final approach course.

LANDING KBJC: From BRNKO on track 247° to cross PICKK at or below 14000, then on track 247° to cross BLTZZ at 12000 and at or below 250K, then on track 247° to cross BWLIN at 10000, then on track 189° to cross REDZN at 10000, then on track 176° to cross PYDRT at 9000. Expect RNAV (GPS) RWY 12L approach or visual approach as assigned by ATC.

LANDING KFNL/KGXY: From BRNKO on track 247° to cross PICKK at or below 14000, then on track 247° to cross BLTZZ at 12000 and at or below 250K, then on track 247° to cross ORRNG at 9000, then on track 247°. Expect RADAR vectors to final approach course.

LANDING KLMO: From BRNKO on track 247° to cross PICKK at or below 14000, then on track 247° to cross BLTZZ at 12000 and at or below 250K, then on track 247° to cross BWLIN at 10000, then on track 189° to cross REDZN at 10000, then on track 176° to cross HBALL at 9000, then on track 176°. Expect RADAR vectors to final approach course.

LOST COMMUNICATIONS

LANDING KAPA: From AAYES direct LOWRE and execute RNAV (GPS) RWY 17L approach.

LANDING KBJC: From PYDRT execute RNAV (GPS) RWY 12L approach.

LANDING KLMO: From HBALL direct KAYOO direct WOLTS and execute RNAV (GPS) RWY 29 approach.

LANDING KFNL/KGXY: Proceed to GLL VOR/DME, execute approach.

SW-1, 23 JAN 2025 to 20 FEB 2025

SW-1, 23 JAN 2025 to 20 FEB 2025