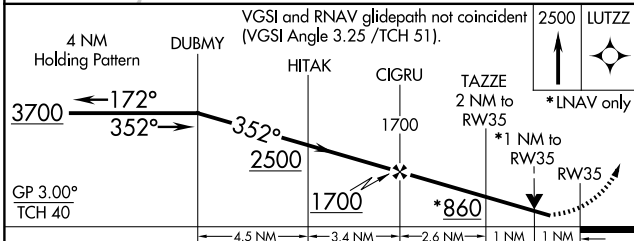
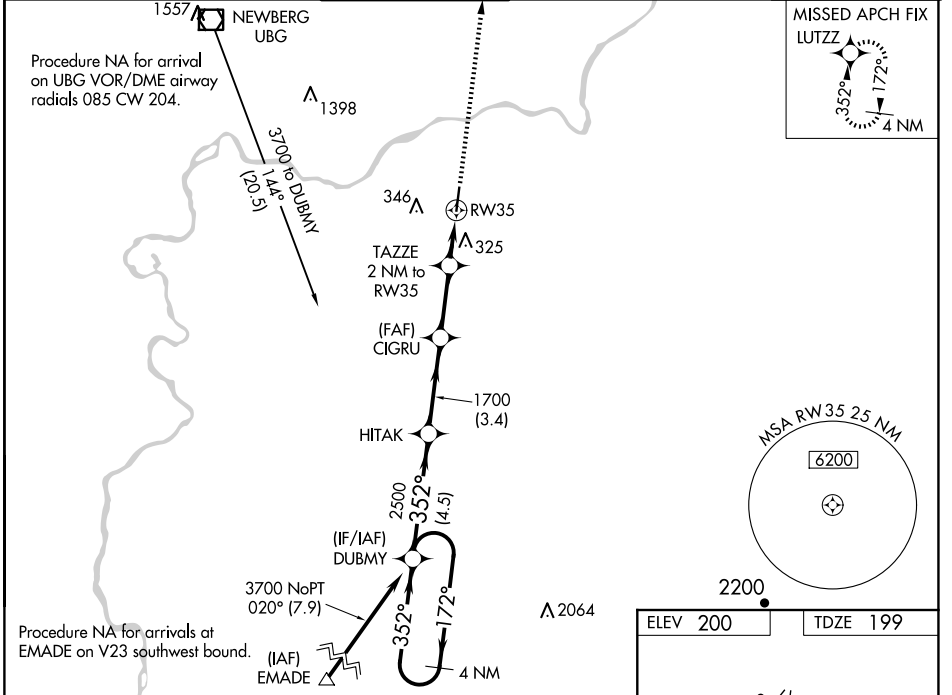


WAAS CH 77508 W35A	APP CRS 352°	Rwy Idg 5003 TDZE 199 Apt Elev 200
--	------------------------	---

RNAV (GPS) RWY 35

AURORA STATE (UAO)

RNP APCH.		MISSED APPROACH: Climb to 2500 direct LUTZZ and hold.	
ATIS ★ 118.525	PORTLAND APP CON 126.0 269.175	AURORA TOWER ★ 120.35 (CTAF)	GND CON 119.15
		CLNC DEL 119.15	PORTLAND CLNC DEL 119.95 (When tower closed)



CATEGORY	A	B	C	D
LPV DA	453-7/8 254 (300-7/8)			
LNAV/VNAV DA	515-1 316 (400-1)			
LNAV MDA	620-1 421 (500-1)	620-1 1/4 421 (500-1 1/4)		
C CIRCLING	700-1 500 (500-1)	700-1 1/2 500 (500-1 1/2)	940-2 1/4 740 (800-2 1/4)	

