

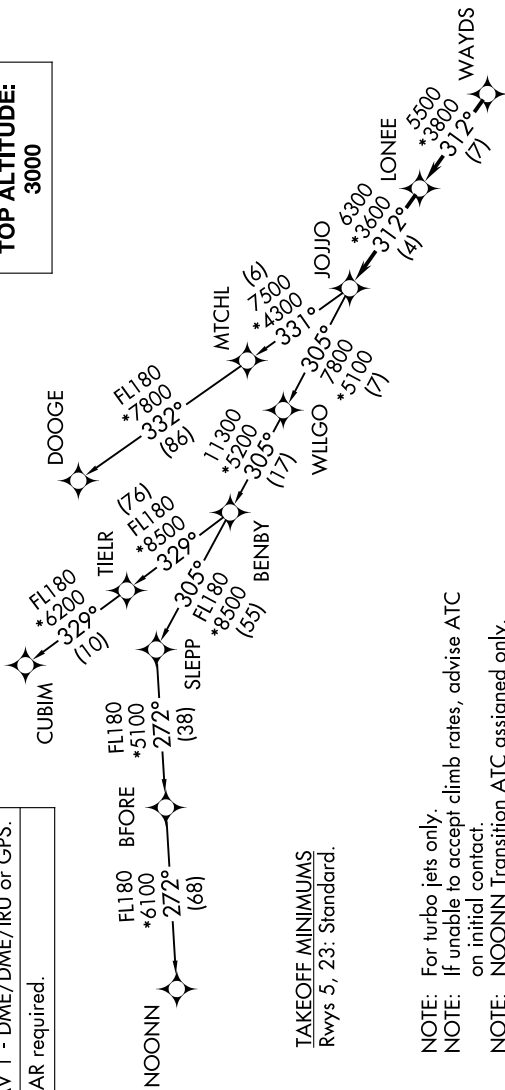
# JOJO FIVE DEPARTURE (RNAV)

SE-2, 23 JAN 2025 to 20 FEB 2025

RNAV 1 - DME/DME/IRU or GPS.  
RADAR required.

**TOP ALTITUDE:**  
**3000**

CHARLOTTE DEP CON  
120.05 307.8  
ASOS  
135.775  
CUNC DEL  
132.55  
UNICOM (CTAF)  
122.7



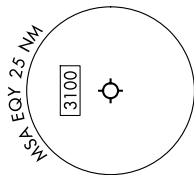
TAKEOFF MINIMUMS  
Rwys 5, 23: Standard.

- NOTE: For turbo jets only.
- NOTE: If unable to accept climb rates, advise ATC on initial contact.
- NOTE: NOONN Transition ATC assigned only.
- NOTE: Upon reaching 10000 MSL, accelerate to and maintain 280K, if unable advise ATC.

### DEPARTURE ROUTE DESCRIPTION

Climb on heading assigned by ATC, on RADAR vectors to WAYDS, then on depicted route to JOJO. Then on assigned transition. Maintain 3000, expect filed altitude within 10 minutes after departure.

- CUBIM TRANSITION (JOJO5.CUBIM)
- DOOGE TRANSITION (JOJO5.DOOGE)
- NOONN TRANSITION (JOJO5.NOONN)



NOTE: Chart not to scale.

# JOJO FIVE DEPARTURE (RNAV)

SE-2, 23 JAN 2025 to 20 FEB 2025