

APP CRS **096°**  
 Rwy Idg **5506**  
 TDZE **385**  
 Apt Elev **385**

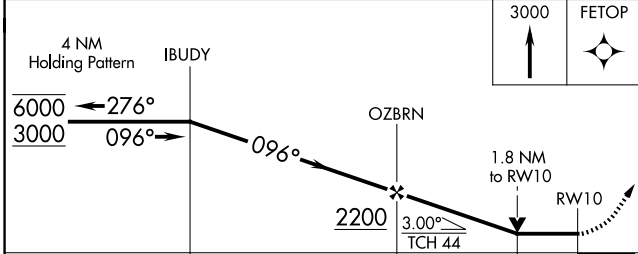
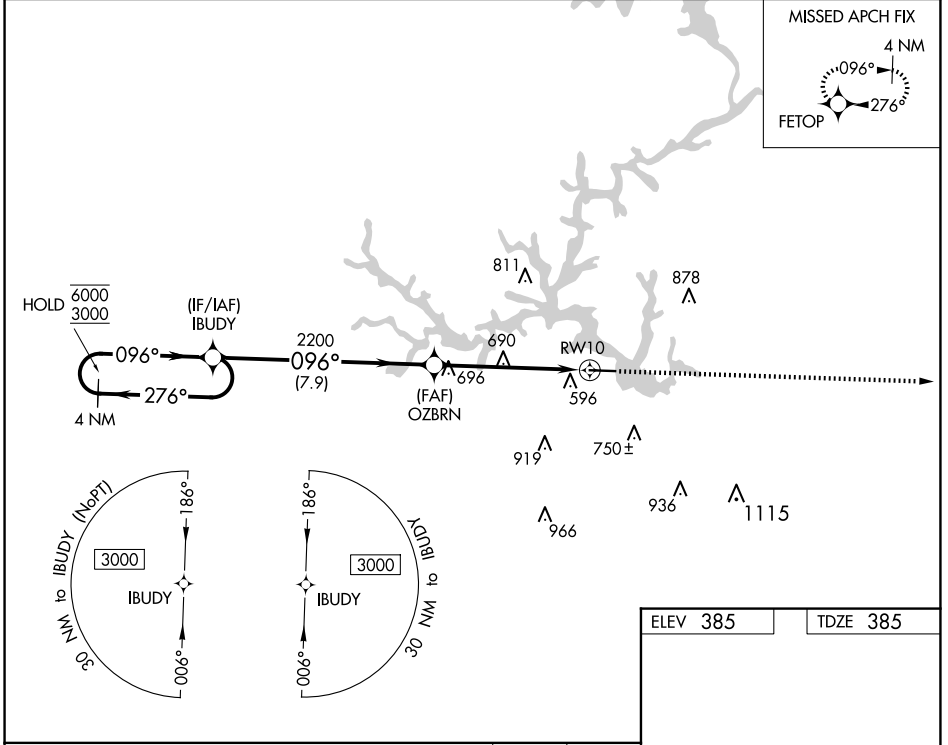
# RNAV (GPS) RWY 10

BALDWIN COUNTY RGNL (MLJ)

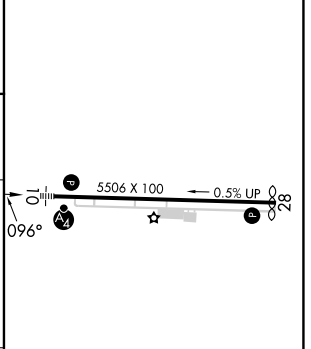
RNP APCH - GPS. MALSF

Rwy 10 helicopter visibility reduction below 3/4 SM NA. MISSED APPROACH: Climb to 3000 direct FETOP and hold.

AWOS-3 **120.925** ATLANTA APP CON ★ **124.2 279.6** UNICOM **122.975** (CTAF)



ELEV 385 TDZE 385



| CATEGORY | A      | B           | C                     | D                     |
|----------|--------|-------------|-----------------------|-----------------------|
| LNVA MDA | 1000-1 | 615 (700-1) | 1000-1½               | 615 (700-1½)          |
| CIRCLING | 1000-1 | 615 (700-1) | 1080-2<br>695 (700-2) | 1280-3<br>895 (900-3) |

MIRL Rwy 10-28   
 REIL Rws 10 and 28

SE-4, 23 JAN 2025 to 20 FEB 2025

SE-4, 23 JAN 2025 to 20 FEB 2025