

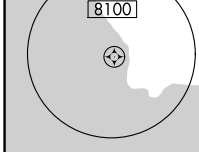
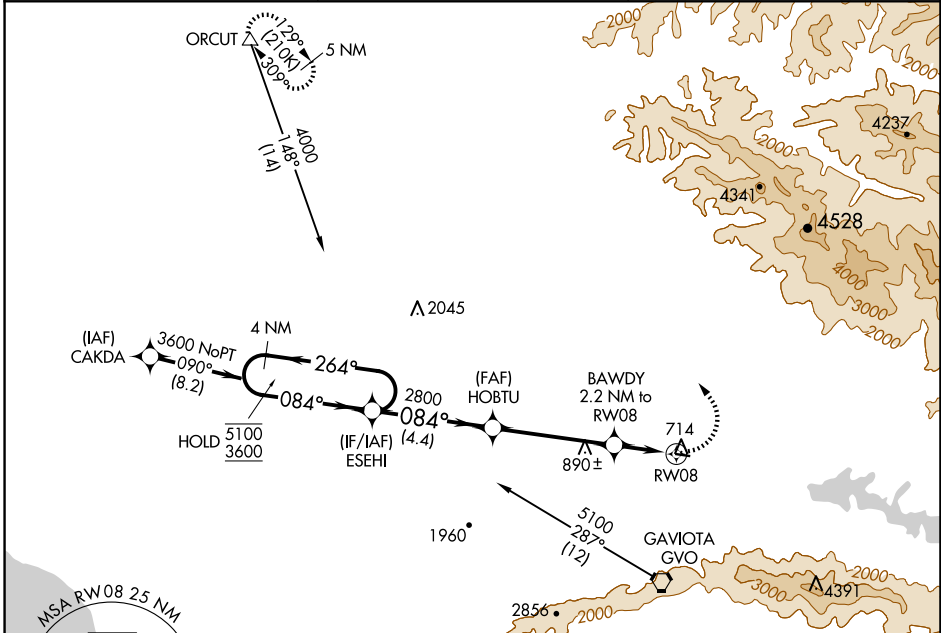
APP CRS	Rwy Idg	2803
084°	TDZE	674
	Apt Elev	674

RNAV (GPS) RWY 8

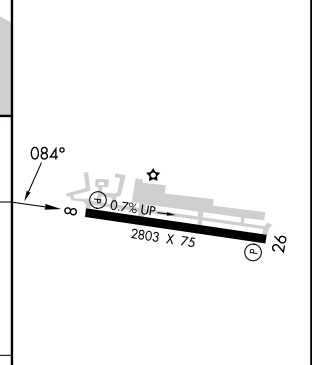
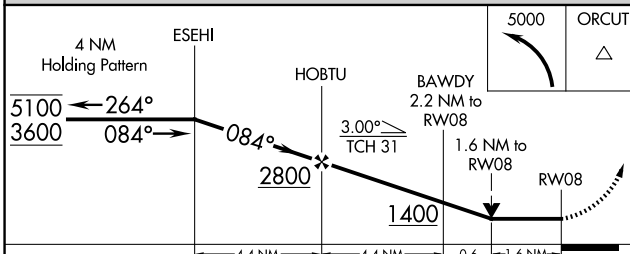
SANTA YNEZ/KUNKLE FLD (IZA)

RNP APCH-GPS.	MISSED APPROACH: Climbing left turn to 5000 direct ORCUT and hold.
<p>▼ Rwy 8 helicopter visibility reduction below 3/4 SM NA.</p> <p>▲ Circling Rwy 8 NA at night.</p>	

AWOS-3PT 118.075	SANTA BARBARA APP CON* 124.15 327.8	UNICOM 122.8 (CTAF) 0
----------------------------	---	---------------------------------



ELEV 674	TDZE 674
----------	----------



CATEGORY	A	B	C	D
LNVA MDA	1180-1	506 (600-1)		NA
CIRCLING	1220-1 546 (600-1)	1340-1 666 (700-1)		NA

REIL Rws 8 and 26 0
MRL Rwy 8-26 0

SW-3, 23 JAN 2025 to 20 FEB 2025

SW-3, 23 JAN 2025 to 20 FEB 2025