

TULLAHOMA, TENNESSEE

RNAV (GPS) RWY 3

APCH CRS	Rwy Idg	6001
027°	TDZE	1065
	Arprt Elev	1065

- (USAF)

ARNOLD AFB (KAYX)

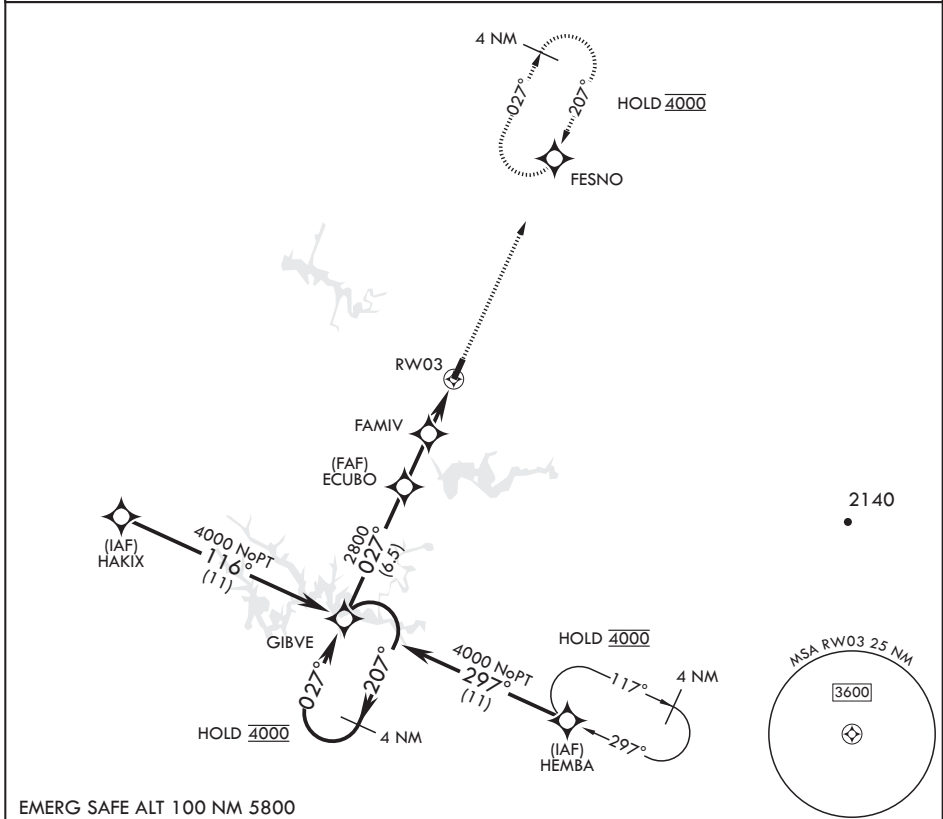
RNP APCH

MISSED APPROACH: Climb to 4000 direct FESNO and hold, continue climb-in-hold to 4000.

* Circling not authorized NW of RWY 3-21.

UNICOM

126.2 (CTAF) 257.975 (CTAF)



EMERG SAFE ALT 100 NM 5800

<p>4 NM Holding Pattern</p> <p>GIBVE</p> <p>4000</p> <p>207°</p> <p>4000</p> <p>207°</p> <p>ECUBO</p> <p>2800</p> <p>FAMIV</p> <p>2000</p> <p>1 NM to RW03</p> <p>RW03</p> <p>2.6 NM</p> <p>2.7 NM</p> <p>4000</p> <p>FESNO</p> <p>ELEV 1065</p> <p>TDZE 1065</p> <p>8001 * 150</p> <p>3</p>	<p>4000</p> <p>FESNO</p> <p>ELEV 1065</p> <p>TDZE 1065</p>			
	<p>† FAMIV to RW03</p> <p>3.12° ≥ †</p> <p>TCH 40</p>			
CATEGORY	A	B	C	D
LNAV MDA	1420-1	355	(400-1)	
CIRCLING*	1520-1 455 (500-1)	1620-1 555 (600-1)	1640-1½ 575 (600-1½)	1800-2¼ 735 (800-2¼)

TULLAHOMA, TENNESSEE

35°24'N - 86°05'W

ARNOLD AFB (KAYX)

Orig 19MAY22

RNAV (GPS) RWY 3

SE-1, 23 JAN 2025 to 20 FEB 2025

SE-1, 23 JAN 2025 to 20 FEB 2025

HIRL all Rwys
REIL all Rwys