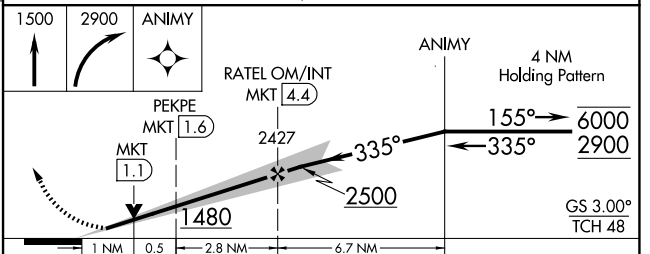
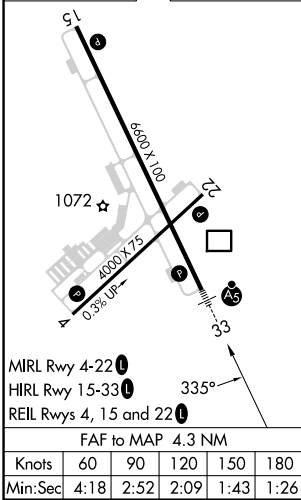
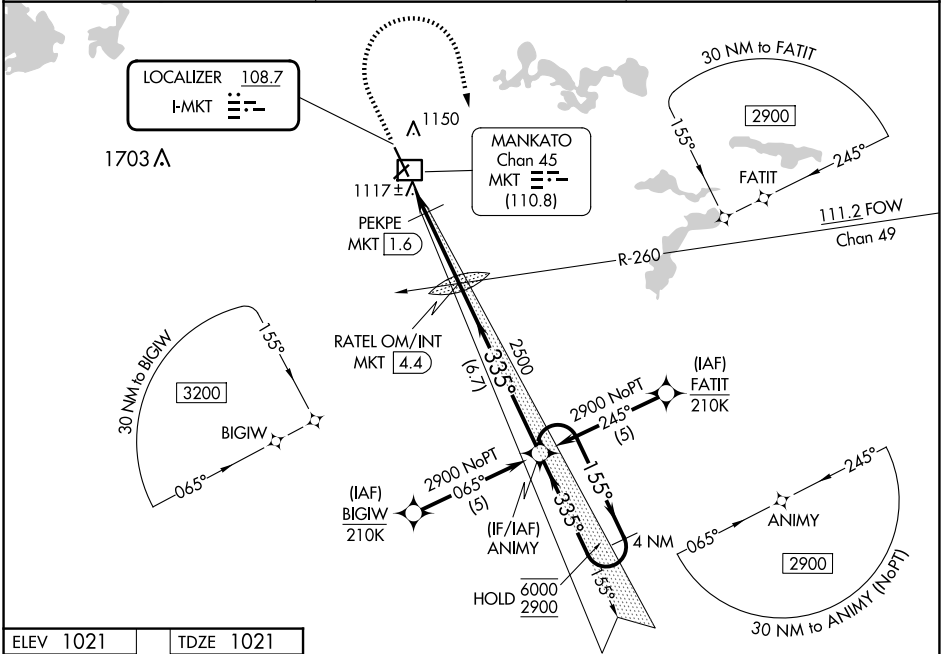


LOC I-MKT 108.7	APP CRS 335°	Rwy Idg TDZE Apt Elev	6600 1021 1021
---------------------------	------------------------	-----------------------------	---

ILS Y or LOC Y RWY 33

MANKATO RGNL (MKT)

RNP APCH - GPs.		MALSR	MISSED APPROACH: Climb to 1500 then climbing right turn to 2900 direct ANIMY and hold.
*DME from MKT DME. DME use requires simultaneous reception of I-MKT and MKT DME. For inop ALS, increase PEKPE fix minimums S-LOC 33 Cats C/D visibility to 1 SM.			
AWOS-3PT 118.175	MINNEAPOLIS CENTER 135.0 306.9	UNICOM 122.725 (CTAF) 0	



CATEGORY	A	B	C	D
S-ILS 33	1221-1/2 200 (200-1/2)			
S-LOC 33	1480-1/2	459 (500-1/2)	1480-7/8	459 (500-7/8)
CIRCLING	1480-1	459 (500-1)	1600-1/2	1600-2
			579 (600-1/2)	579 (600-2)
PEKPE FIX MINIMUMS*				
S-LOC 33	1380-1/2	359 (400-1/2)	1380-5/8	359 (400-5/8)
CIRCLING	1460-1	439 (500-1)	1600-1/2	1600-2
	439 (500-1)	459 (500-1)	579 (600-1/2)	579 (600-2)

NC-1, 23 JAN 2025 to 20 FEB 2025

NC-1, 23 JAN 2025 to 20 FEB 2025