

(KAYAK.KAYAK6) 24137
KAYAK SIX ARRIVAL

ELLISON ONIZUKA KONA INTL AT KEAHOLE (KOAA) (PHKO)
AL-5761 (FAA)
KAILUA/KONA, HAWAII

HCF CENTER
119.3 307.1 (LNY, FIRES)
124.1 317.5 (MKK)
118.45 278.3 (OKALA, OHOHI, UPP)
KONA TOWER*
120.3
ATIS 127.4

MOLOKAI
116.1 MKK
Chan 108

MAUI
115.1 OGG
Chan 98

LANAI
117.7 LNY
Chan 124

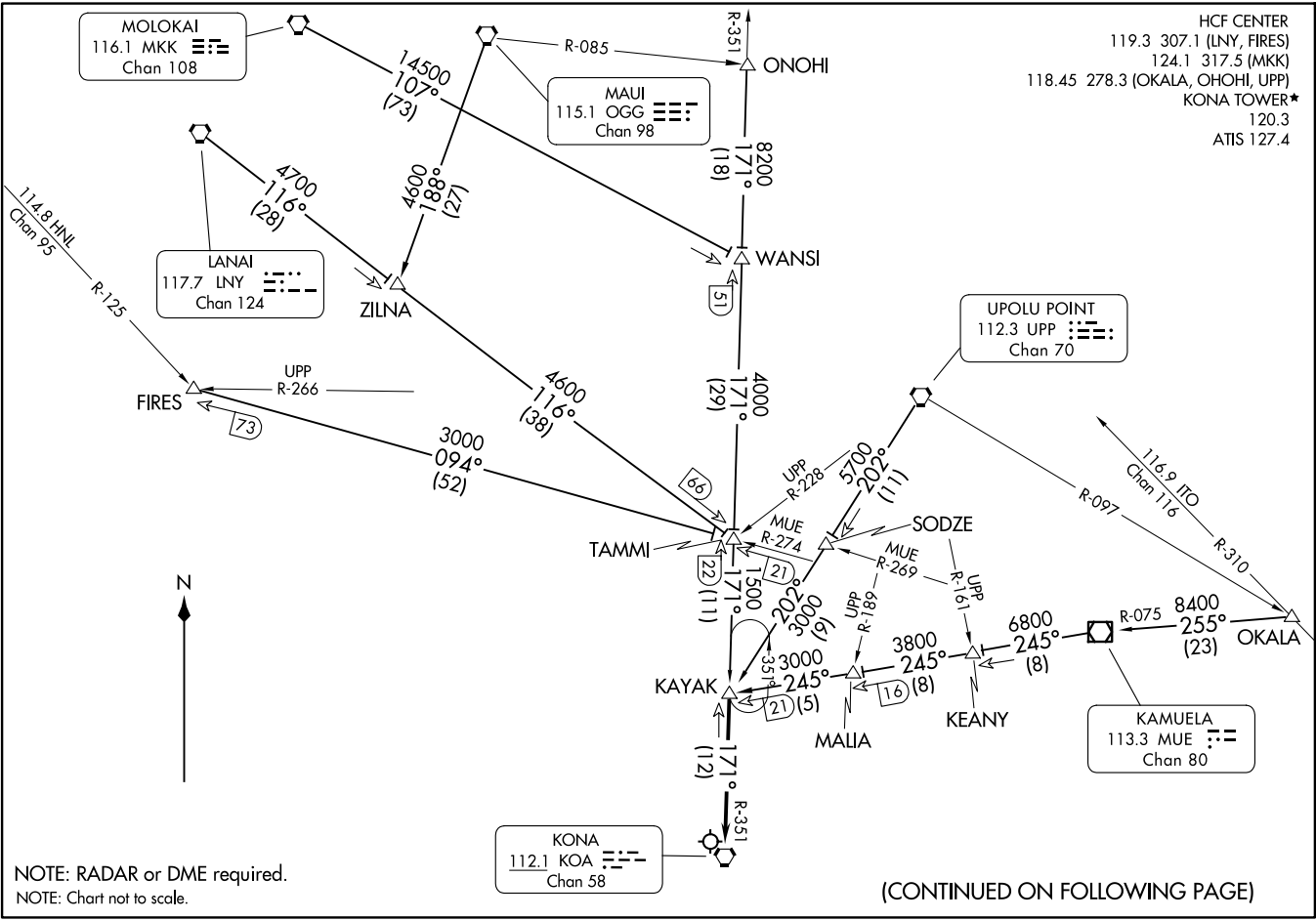
UPOLU POINT
112.3 UPP
Chan 70

KAMUELA
113.3 MUE
Chan 80

KONA
112.1 KOA
Chan 58

KAYAK SIX ARRIVAL
(KAYAK.KAYAK6) 07DEC17

ELLISON ONIZUKA KONA INTL AT KEAHOLE (KOAA) (PHKO)
KAILUA/KONA, HAWAII



NOTE: RADAR or DME required.
NOTE: Chart not to scale.

(CONTINUED ON FOLLOWING PAGE)

ARRIVAL ROUTE DESCRIPTION

FIRES TRANSITION (FIRES.KAYAK6): From over FIRES on MUE R-274 to TAMMI , then on KOA R-351 to KAYAK . Thence. . . .

LANAI TRANSITION (LNY.KAYAK6): From over LNY VORTAC on LNY R-116 to TAMMI , then on KOA R-351 to KAYAK . Thence. . . .

MAUI TRANSITION (OGG.KAYAK6): From over OGG VORTAC on OGG R-188 to ZILNA, then on LNY R-116 to TAMMI , then on KOA R-351 to KAYAK . Thence. . . .

MOLOKAI TRANSITION (MKK.KAYAK6): From over MKK VORTAC on MKK R-107 and KOA R-351 to TAMMI , then on KOA R-351 to KAYAK . Thence. . . .

OKALA TRANSITION (OKALA.KAYAK6): From over OKALA on MUE VOR/DME R-075 to MUE VOR/DME, then on MUE R-245 to KAYAK . Thence. . . .

ONOHI TRANSITION (ONOHI.KAYAK6): From over ONOHI on KOA R-351 to KAYAK. Thence. . . .

UPOLU POINT TRANSITION (UPP.KAYAK6): From over UPP VORTAC on UPP R-202 to KAYAK . Thence. . . .

. . . .From over KAYAK on KOA R-351 to KOA VORTAC. Expect RADAR vectors.

LOST COMMUNICATIONS: At KAYAK proceed on VOR/DME or TACAN RWY 17 approach.

PAC: 26 DEC 2024 to 20 FEB 2025

PAC: 26 DEC 2024 to 20 FEB 2025