

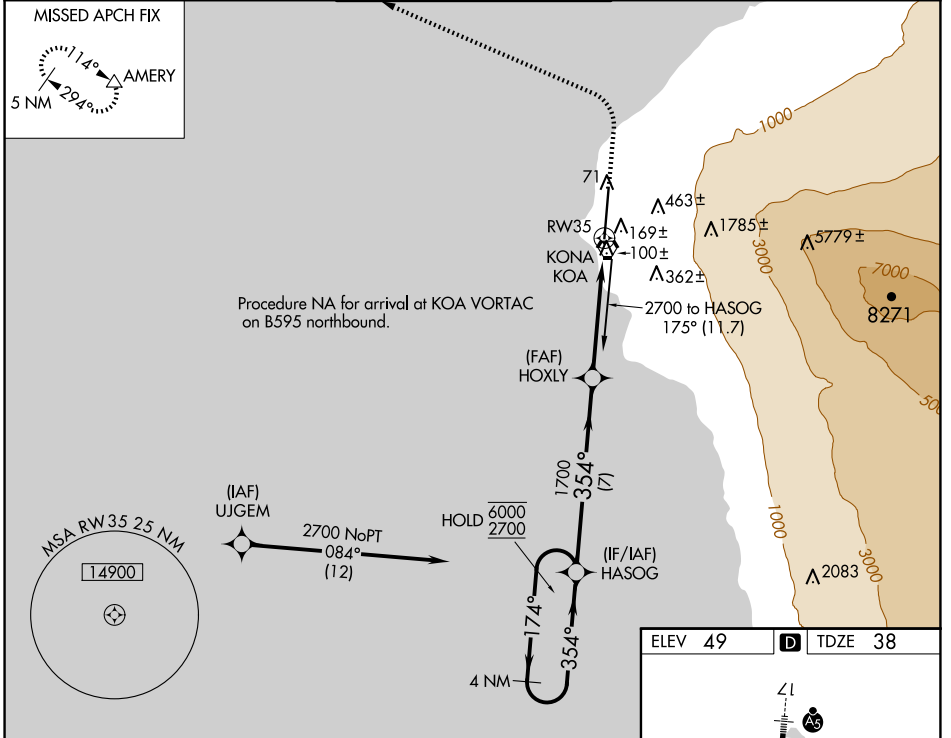
APP CRS	Rwy Idg	11000
354°	TDZE	38
	Apt Elev	49

RNAV (GPS) RWY 35

ELLISON ONIZUKA KONA INTL AT KEAHOLE (KOA) (PHKO)

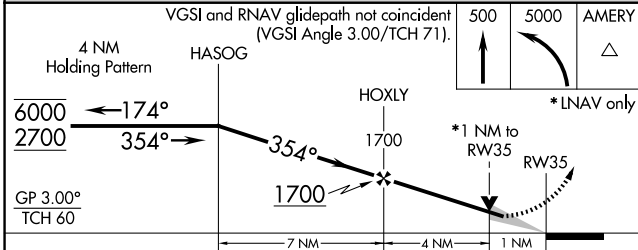
RNP APCH - GPS.		CIRCLING NA east of Rwy 17-35. WAAS VNAV NA. For uncompensated Baro-VNAV systems, LNAV/VNAV NA below 17°C or above 54°C.		MISSED APPROACH: Climb to 500 then climbing left turn to 5000 direct AMERY and hold.	
-----------------	--	--	--	--	--

ATIS 127.4	HCF CENTER 118.45 278.3	KONA TOWER* 120.3 (CTAF) 254.3	GND CON 121.9	CLNC DEL 118.6
----------------------	-----------------------------------	--	-------------------------	--------------------------

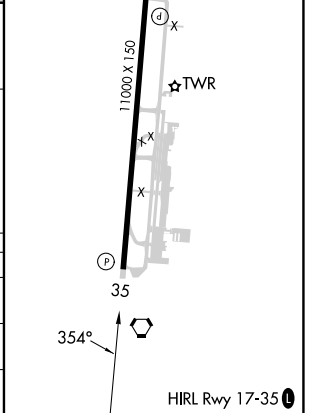


PAC, 26 DEC 2024 to 20 FEB 2025

PAC, 26 DEC 2024 to 20 FEB 2025



ELEV 49	D TDZE 38
---------	------------------



CATEGORY	A	B	C	D	E
LNAV/VNAV DA	366-1 328 (400-1)				
LNAV MDA	420-1	382 (400-1)	420-1½ 382 (400-1½)		
C CIRCLING	520-1	471 (500-1)	520-1½ 471 (500-1½)	600-2	551 (600-2)