


APP CRS	Rwy Idg <b>11000</b>
<b>174°</b>	TDZE <b>47</b>
	Apt Elev <b>47</b>

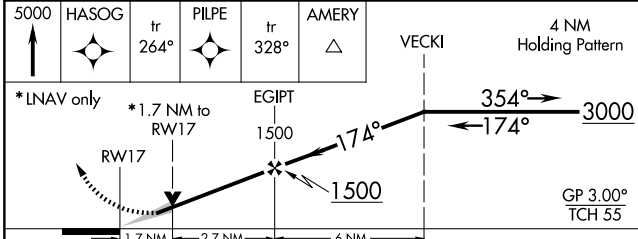
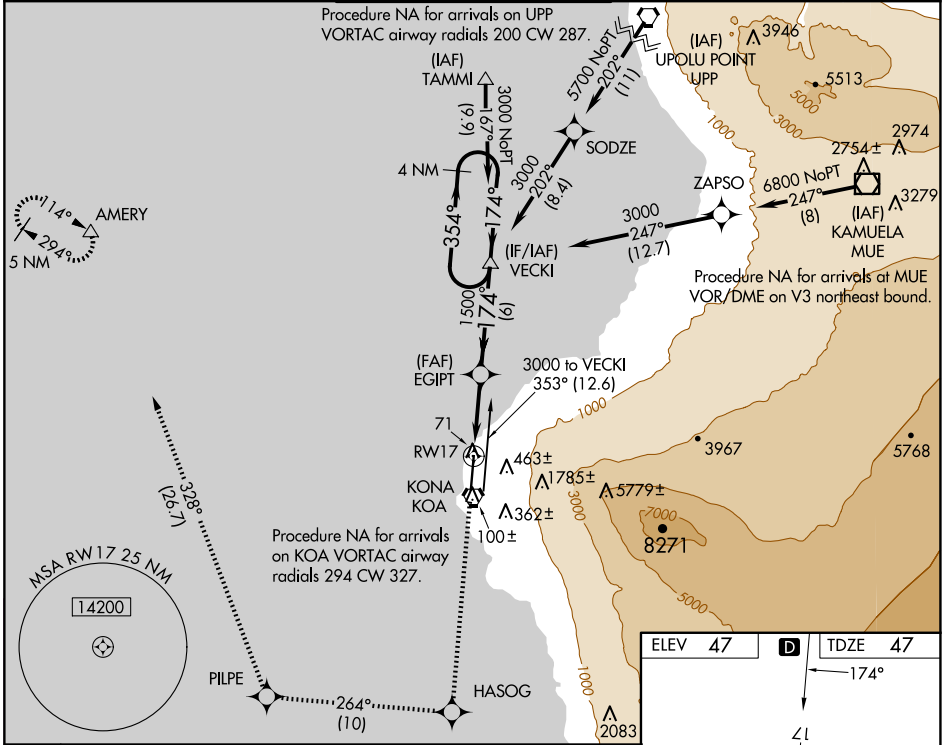
# RNAV (GPS) Y RWY 17

## ELLISON ONIZUKA KONA INTL AT KEAHOLE (KOA) (PHKO)

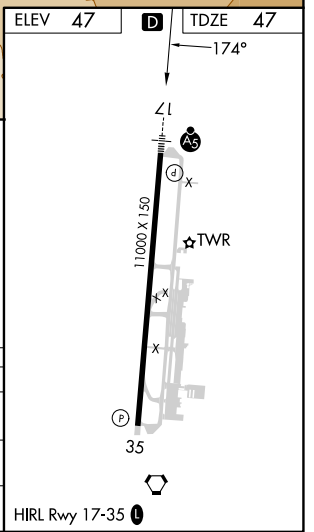
**WAAS VNAV NA.** For uncompensated Baro-VNAV systems, LNAV/VNAV NA below -5°C (23°F) or above 43°C (109°F). Circling NA east of Rwy 17-35. DME/DME RNP-0.3 NA. For inop ALS, increase LNAV/VNAV all Cats visibility to 1/2 miles.

**MALSR**  
 MISSED APPROACH: Climb to 5000 direct HASOG and on track 264° track to PILPE and on track 328° to AMERY and hold.

ATIS <b>127.4</b>	HCF CENTER <b>118.45 278.3</b>	KONA TOWER★ <b>120.3(CTAF) 254.3</b>	GND CON <b>121.9</b>	CLNC DEL <b>118.6</b>
----------------------	-----------------------------------	---	-------------------------	--------------------------



CATEGORY	A	B	C	D
LNAV/VNAV DA	540-1¼		493 (500-1¼)	
LNAV MDA	640-½	593 (600-½)	640-1¼	593 (600-1¼)
<b>C</b> CIRCLING	640-1	593 (600-1)	640-1¼	640-2
			593 (600-1¼)	593 (600-2)



PAC, 26 DEC 2024 to 20 FEB 2025

PAC, 26 DEC 2024 to 20 FEB 2025