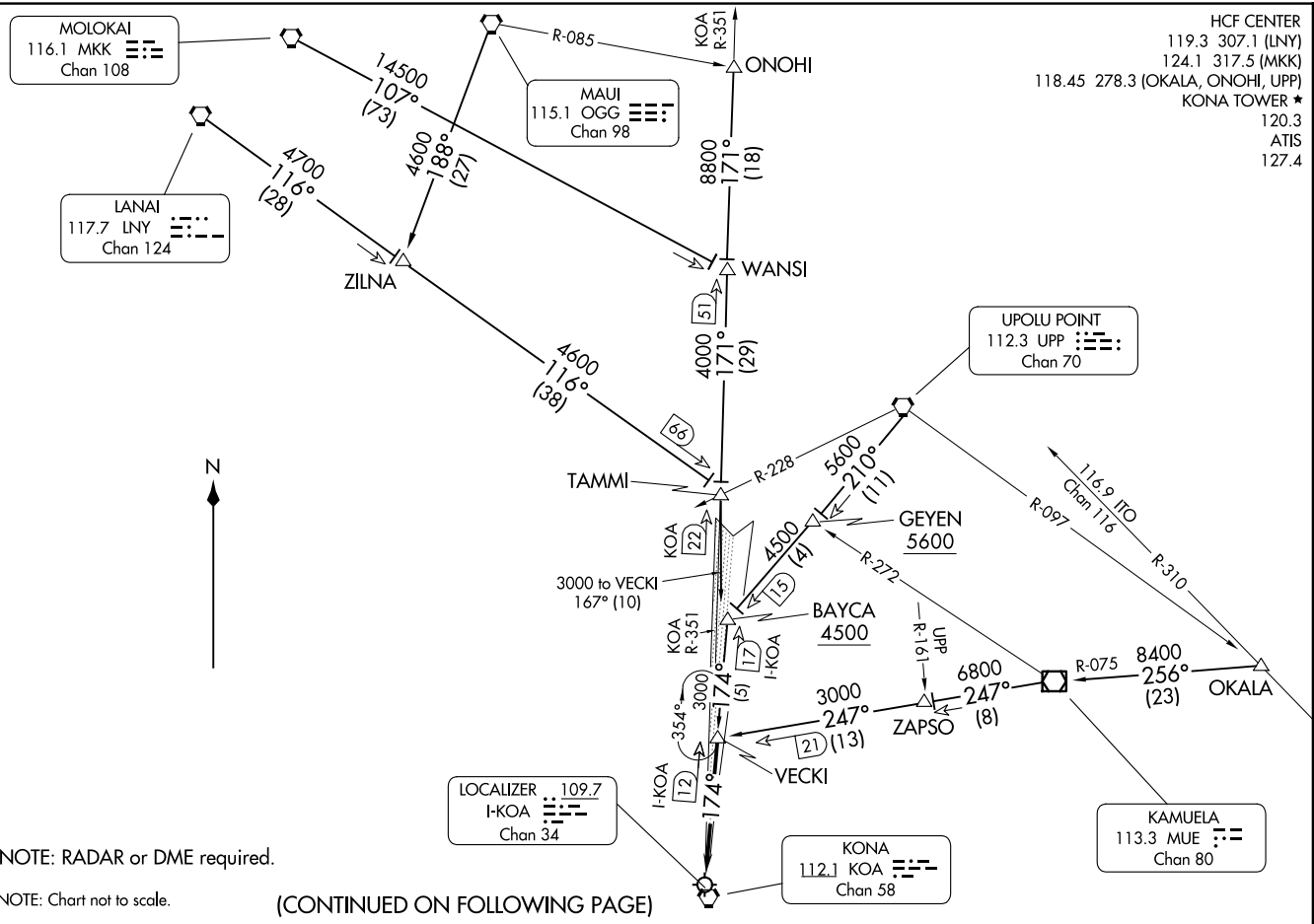


**(VECKI, VECKI9) 24025**  
**VECKI NINE ARRIVAL**

ELIUSON ONIZUKA KONA INTL AT KEAHOLE (KOA) (PHKO)  
 KAILUA/KONA, HAWAII  
 AL-5761 (FAA)

HCF CENTER  
 119.3 307.1 (LNY)  
 124.1 317.5 (MKK)  
 118.45 278.3 (OKALA, ONOHI, UPP)  
 KONA TOWER ★  
 120.3  
 ATIS  
 127.4



NOTE: RADAR or DME required.

NOTE: Chart not to scale.

(CONTINUED ON FOLLOWING PAGE)

**VECKI NINE ARRIVAL**  
 (VECKI, VECKI9) 07DEC17

ELIUSON ONIZUKA KONA INTL AT KEAHOLE (KOA) (PHKO)  
 KAILUA/KONA, HAWAII

# VECKI NINE ARRIVAL

## ARRIVAL ROUTE DESCRIPTION

LANAI TRANSITION (LNY.VECKI9): From over LNY VORTAC on LNY R-116 to TAMMI , then on heading 167° to VECKI . Thence . . . .

MAUI TRANSITION (OGG.VECKI9): From over OGG VORTAC on OGG R-188 to ZILNA , then on LNY R-116 to TAMMI , then on heading 167° to VECKI . Thence . . . .

MOLOKAI TRANSITION (MKK.VECKI9): From over MKK VORTAC on MKK R-107 to WANSI , then on KOA R-351 to TAMMI , then on heading 167° to VECKI . Thence . . . .

OKALA TRANSITION (OKALA.VECKI9): From over OKALA on MUE VOR/DME R-075 to MUE VOR/DME, then on MUE R-247 to VECKI . Thence . . . .

ONOHI TRANSITION (ONOHI.VECKI9): From over ONOHI on KOA R-351 to TAMMI , then on heading 167° to VECKI . Thence . . . .

UPOLU POINT TRANSITION (UPP.VECKI9): From over UPP VORTAC on UPP R-210 to BAYCA , then on I-KOA 174° course to VECKI . Thence . . . .

. . . . from over VECKI INT on I-KOA localizer course to Ellison Onizuka Kona Intl at Keahole.

LOST COMMUNICATIONS: At VECKI INT proceed with ILS or LOC/DME RWY 17 approach.

PAC, 26 DEC 2024 to 20 FEB 2025

PAC, 26 DEC 2024 to 20 FEB 2025