

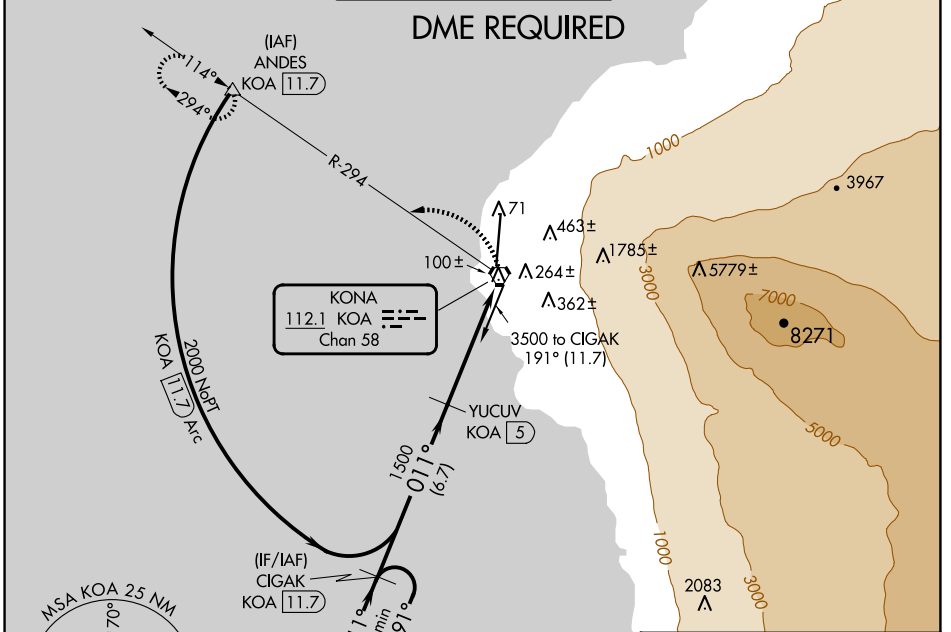
VORTAC KOA <b>112.1</b> Chan <b>58</b>	APP CRS <b>011°</b>	Rwy Idg <b>11000</b> TDZE <b>37</b> Apt Elev <b>47</b>
--	------------------------	--

# VOR or TACAN RWY 35

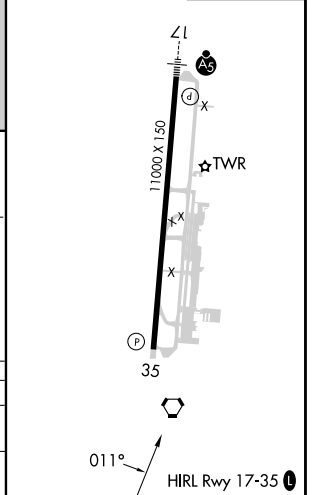
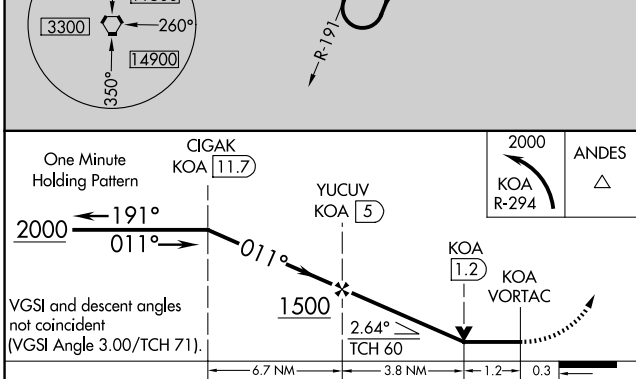
ELLISON ONIZUKA KONA INTL AT KEAHOLE (KOA) (PHKO)

DME required.		MISSED APPROACH: Climbing left turn to 2000 on KOA VORTAC R-294 to ANDES/11.7 DME and hold.		
Circling NA east of Rwy 17-35.				

ATIS <b>127.4</b>	HCF CENTER <b>118.45 278.3</b>	KONA TOWER* <b>120.3(CTAF) 254.3</b>	GND CON <b>121.9</b>	CLNC DEL <b>118.6</b>
----------------------	-----------------------------------	---	-------------------------	--------------------------



ELEV <b>47</b>	<b>D</b>	TDZE <b>37</b>
----------------	----------	----------------



CATEGORY	A	B	C	D	E
S-35	600-1	563 (600-1)	600-1 <sup>5</sup> / <sub>8</sub>	563 (600-1 <sup>5</sup> / <sub>8</sub> )	
<b>C</b> CIRCLING	600-1	553 (600-1)	600-1 <sup>5</sup> / <sub>8</sub> 553 (600-1 <sup>5</sup> / <sub>8</sub> )	600-2 553 (600-2)	

PAC, 26 DEC 2024 to 20 FEB 2025

PAC, 26 DEC 2024 to 20 FEB 2025