

MEDINA, OHIO

AL-5763 (FAA)

22363

APP CRS	Rwy Idg	3556
271°	TDZE	1183
	Apt Elev	1190

RNAV (GPS) RWY 27

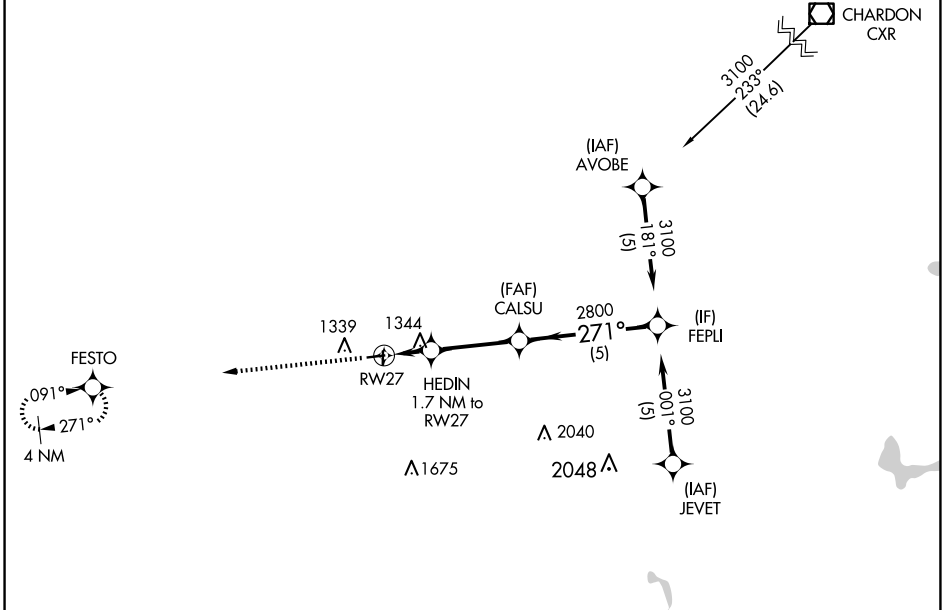
MEDINA MUNI (1G5)

RNP APCH.

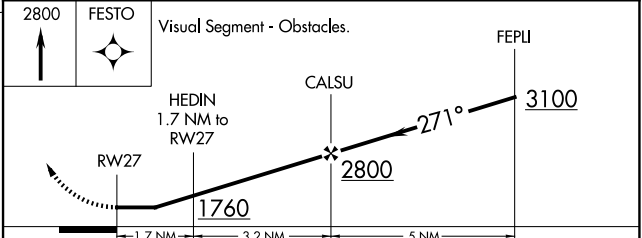
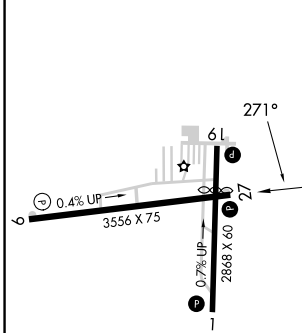
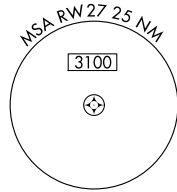
NA Rwy 27 helicopter visibility reduction below $\frac{3}{4}$ SM NA. Use Cleveland-Hopkins Intl altimeter setting.

MISSED APPROACH: Climb to 2800 direct FESTO and hold.

CLE ASOS 127.85	CLEVELAND APP CON 125.35 346.325	UNICOM 123.0 (CTAF) 0
---------------------------	--	---------------------------------



ELEV 1190	TDZE 1183
-----------	-----------



REIL Rwy 27 0	MIRL Rwy 9-27 and 1-19 0			
CATEGORY	A	B	C	D
RNAV MDA	1700-1	517 (600-1)	1700-1 $\frac{3}{8}$ 517 (600-1 $\frac{3}{8}$)	NA

MEDINA, OHIO
Orig-C 07NOV19

41°08'N-81°46'W

RNAV (GPS) RWY 27

EC-2, 23 JAN 2025 to 20 FEB 2025

EC-2, 23 JAN 2025 to 20 FEB 2025