

VOR/DME ACO <b>114.4</b> Chan <b>91</b>	APP CRS <b>278°</b>	Rwy Idg TDZE <b>1183</b> Apt Elev <b>1190</b>
---	------------------------	---

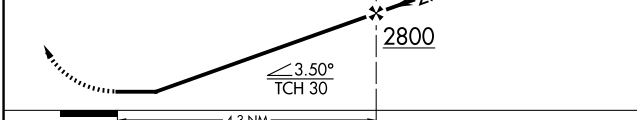
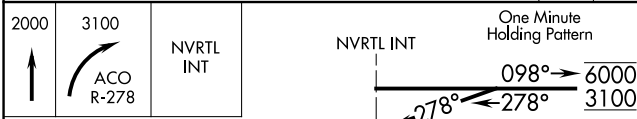
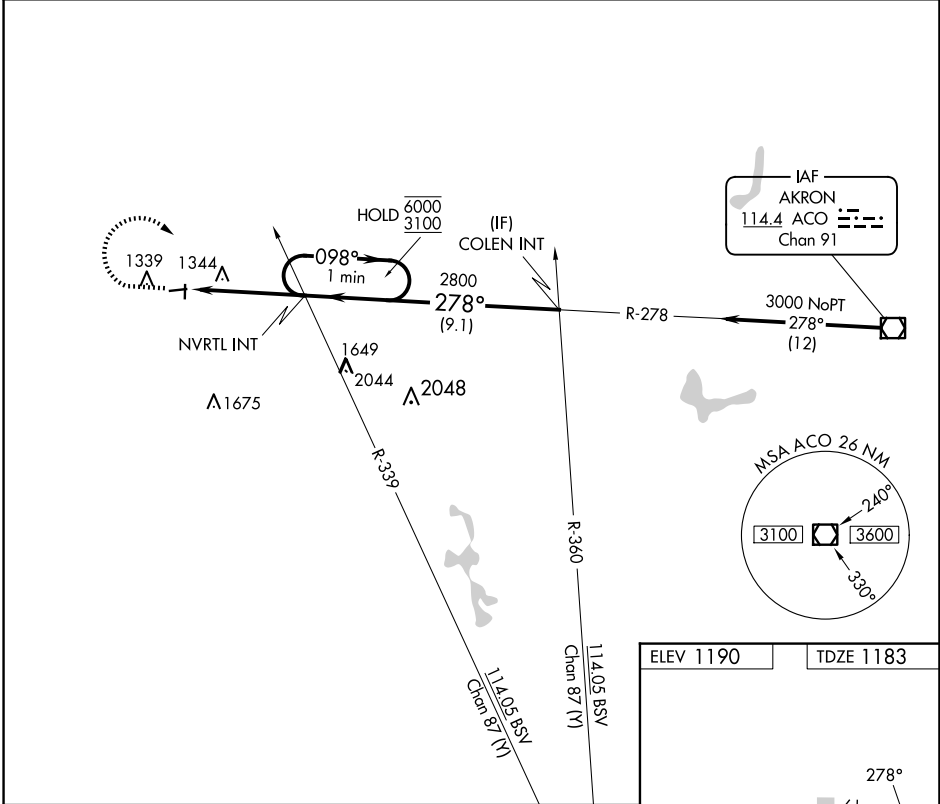
# VOR RWY 27

MEDINA MUNI (1G5)

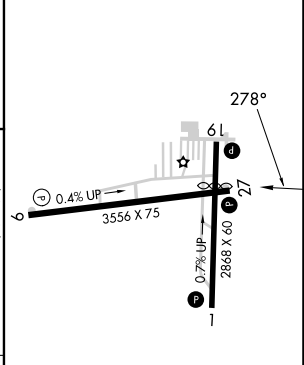
**⚠** Rwy 27 helicopter visibility reduction below 3/4 SM NA.  
**⚠** NA Circling Rwy 1, 9, 19 NA at night. Use Cleveland-Hopkins Intl altimeter setting.

MISSED APPROACH: Climb to 2000 then climbing right turn to 3100 on ACO VOR/DME R-278 to NVRTL INT and hold, continue climb-in-hold to 3100.

CLE ASOS <b>127.85</b>	CLEVELAND APP CON <b>125.35 346.325</b>	UNICOM <b>123.0 (CTAF) 0</b>
---------------------------	--	---------------------------------



ELEV 1190	TDZE 1183
-----------	-----------



CATEGORY	A	B	C	D
S-27	1780-1	597 (600-1)	1780-1¾ 597 (600-1¾)	NA
<b>C</b> CIRCLING	1780-1	590 (600-1)	1780-1¾ 590 (600-1¾)	NA

REIL Rwy 27 **0**  
 MIRL Rwy 9-27, 1-19 **0**

FAF to MAP 4.3 NM

Knots	60	90	120	150	180
Min:Sec	4:18	2:52	2:09	1:43	1:26

EC-2, 23 JAN 2025 to 20 FEB 2025

EC-2, 23 JAN 2025 to 20 FEB 2025