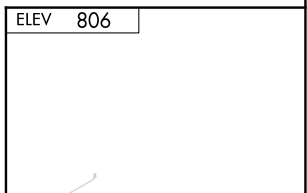
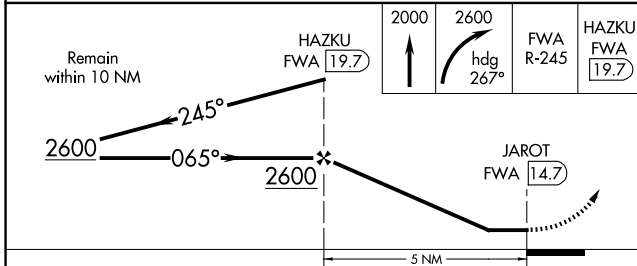
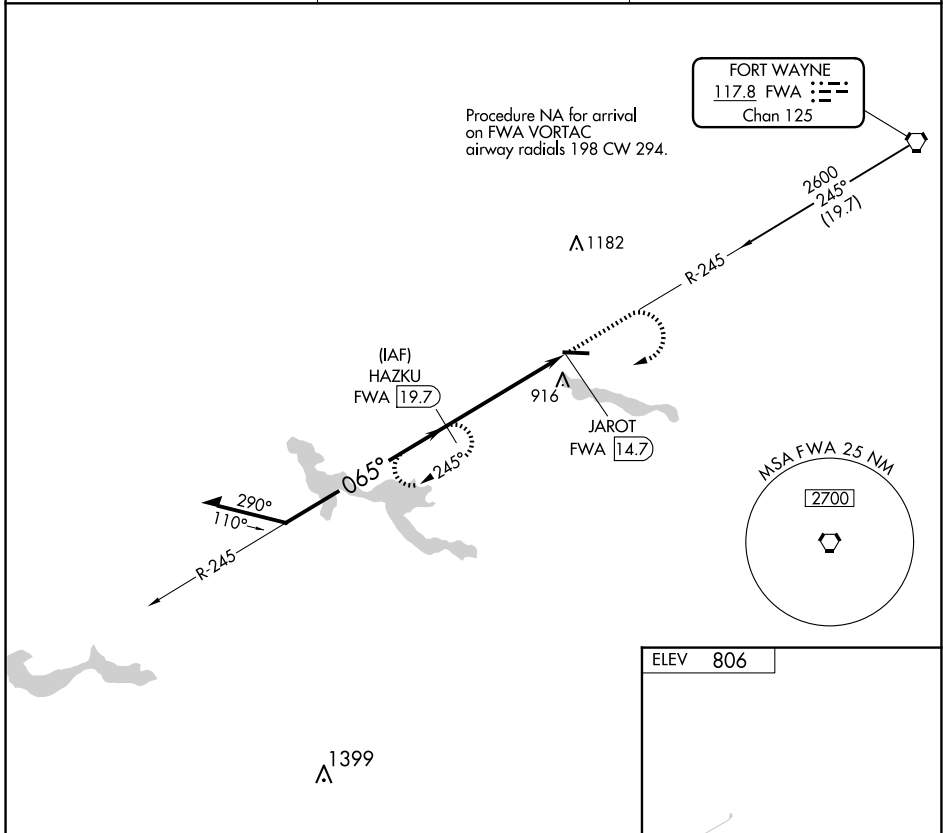


VORTAC FWA 117.8 Chan 125	APP CRS 065°	Rwy Idg TDZE Apt Elev	N/A N/A 806
---	------------------------	-----------------------------	--

VOR-A
HUNTINGTON MUNI (HHG)

DME required.	MISSED APPROACH: Climb to 2000 then climbing right turn to 2600 on heading 267° and on FWA VORTAC R-245 to HAZKU/19.7 DME and hold.
---------------	---

AWOS-3PT 126.575	FORT WAYNE APP CON 127.2 284.6	UNICOM 122.8 (CTAF) 0
----------------------------	--	---------------------------------



CATEGORY	A	B	C	D
C CIRCLING	1300-1	494 (500-1)	1460-1¾ 654 (700-1¾)	1540-2¼ 734 (800-2¼)

MIRL Rwy 10-28 **0**

REIL Rwy 10 and 28 **0**

EC-2, 23 JAN 2025 to 20 FEB 2025

EC-2, 23 JAN 2025 to 20 FEB 2025