

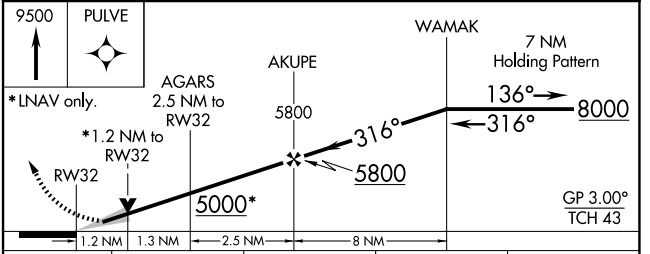
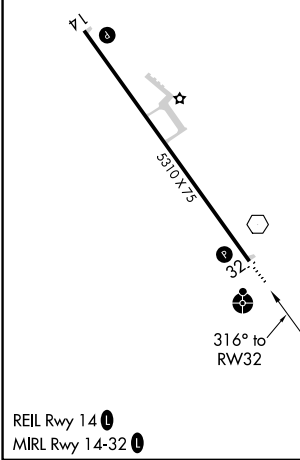
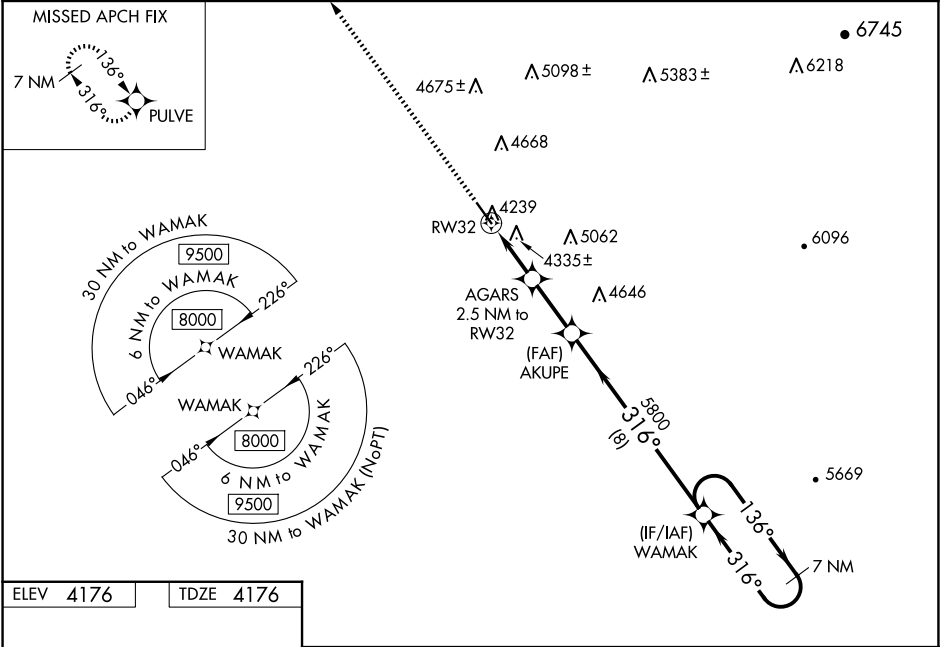
WAAS CH 61225 W32A	APP CRS 316°	Rwy ldg TDZE Apt Elev	5310 4176 4176
--	------------------------	-----------------------------	---

RNAV (GPS) RWY 32

MONDELL FLD (ECS)

RNP APCH.	ODALS	MISSED APPROACH: Climb to 9500 direct PULVE and hold, continue climb-in-hold to 9500.
<p>⚠ When Newcastle altimeter setting not received, procedure NA. For uncompensated Baro-VNAV systems, LNAV/VNAV NA below -23°C (-9°F) or above 53°C (128°F). Circling NA northeast of Rwy 14-32. For inop ODAL, increase LNAV/VNAV visibility all Cats and LNAV Cats C/D ½ mile. Inop table does not apply to LPV all Cats and LNAV Cats A/B.</p>		

AWOS-3PT 118.0	DENVER CENTER 127.95 338.2	UNICOM 122.8 (CTAF) 1
--------------------------	--------------------------------------	--



CATEGORY	A	B	C	D
LPV DA	4385-1 209 (300-1)			
LNAV/VNAV DA	4618-1 ³ / ₈ 442 (500-1 ³ / ₈)			
LNAV MDA	4600-1	424 (500-1)	4600-1 ¹ / ₈	424 (500-1 ¹ / ₈)
C CIRCLING	4700-1	524 (600-1)	4720-1 ¹ / ₂ 544 (600-1 ¹ / ₂)	5000-2 ³ / ₄ 824 (900-2 ³ / ₄)

NW-1, 23 JAN 2025 to 20 FEB 2025

NW-1, 23 JAN 2025 to 20 FEB 2025