

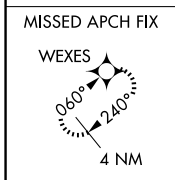
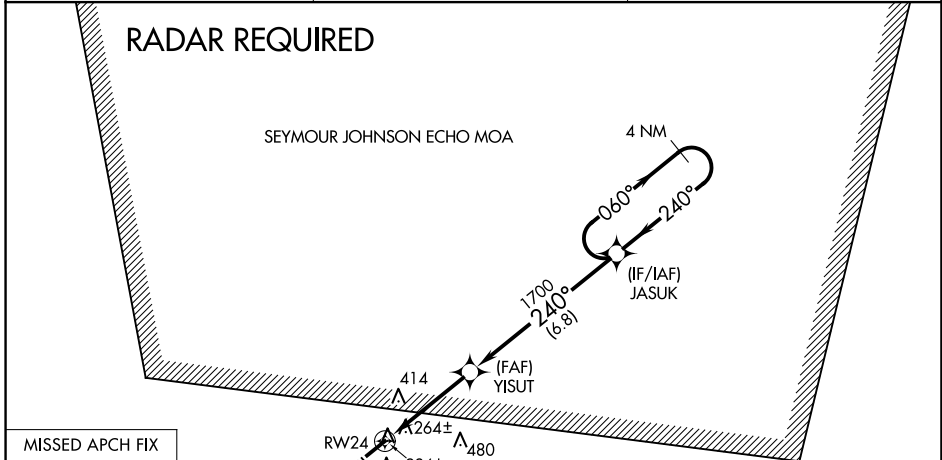
WAAS CH 82620 W24A	APP CRS 240°	Rwy Idg TDZE Apt Elev	5008 144 144
--	------------------------	-----------------------------	---

RNAV (GPS) Z RWY 24

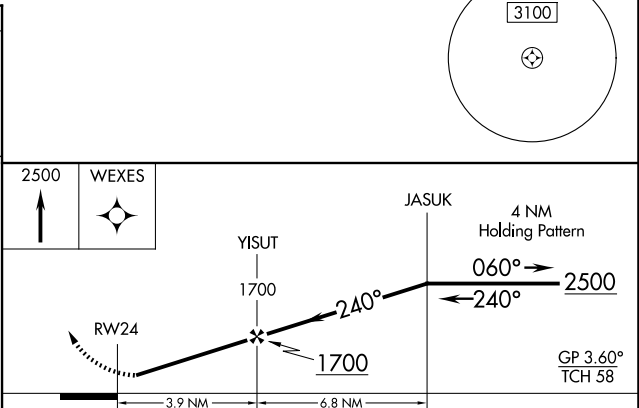
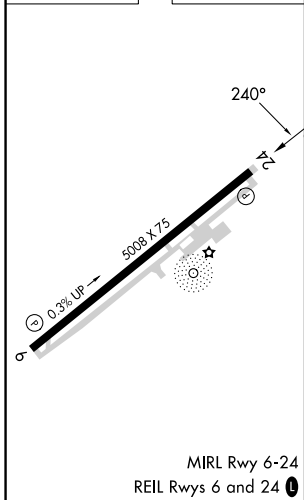
CLINTON-SAMPSON COUNTY (CTZ)

RNP APCH-GPS.	MISSED APPROACH: Climb to 2500 direct WEXES and hold.
<p>▼ Baro-VNAV NA when using Kenansville altimeter setting. For uncompensated Baro-VNAV systems, LNAV/VNAV NA below -15°C or above 46°C. When local altimeter setting not received, use Kenansville altimeter setting and increase all DA 45 feet, increase LNAV/VNAV Cats A/B/C visibility 1/8 mile. Rwy 24 helicopter visibility reduction below 3/4 SM NA.</p>	

AWOS-3 119.125	FAYETTEVILLE APP CON 133.0 290.25	UNICOM 122.8 (CTAF) 0
--------------------------	---	---------------------------------



ELEV 144	TDZE 144
----------	----------



CATEGORY	A	B	C	D
LPV DA	470-1		326 (400-1)	NA
LNAV/VNAV DA	566-1 1/4		422 (500-1 1/4)	NA

SE-2, 23 JAN 2025 to 20 FEB 2025

SE-2, 23 JAN 2025 to 20 FEB 2025