

VOR/DME FAY 114.85 Chan 95 (Y)	APP CRS 095°	Rwy Idg TDZE Apt Elev	N/A N/A 144
---	------------------------	-----------------------------	--

VOR/DME-A
CLINTON-SAMPSON COUNTY (CTZ)

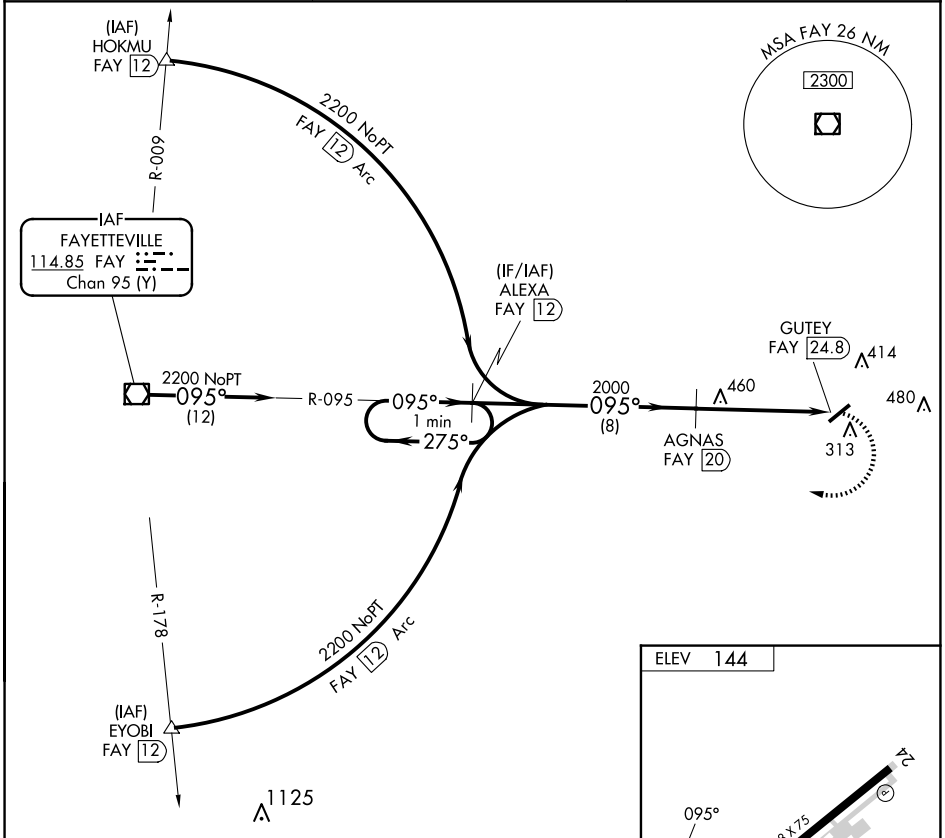
⚠ When local altimeter setting not received, use Kenansville altimeter setting and increase all MDA 60 feet, and increase Circling Cats C/D visibility ¼ mile.

MISSED APPROACH: Climbing right turn to 2200 on FAY VOR/DME R-095 to ALEXA/FAY 12 DME and hold.

AWOS-3
119.125

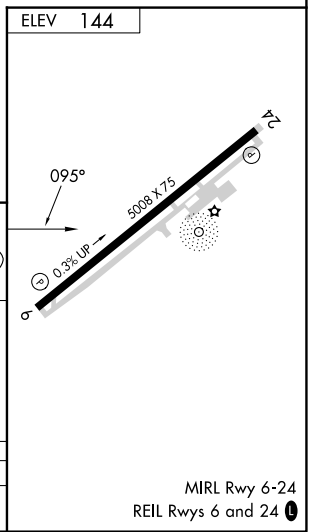
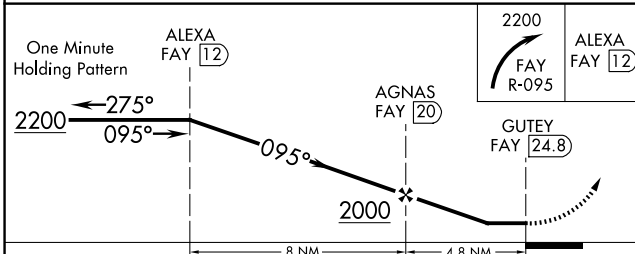
FAYETTEVILLE APP CON
133.0 290.25

UNICOM
122.8 (CTAF) 0



SE-2, 23 JAN 2025 to 20 FEB 2025

SE-2, 23 JAN 2025 to 20 FEB 2025



CATEGORY	A	B	C	D
CIRCLING	760-1 616 (700-1)	780-1 636 (700-1)	840-2 696 (700-2)	840-2¼ 696 (700-2¼)