

APP CRS	Rwy Idg	3335
143°	TDZE	121
	Apt Elev	121

RNAV (GPS) RWY 14

NORTHAMPTON (7B2)

RNP APCH - GPS.

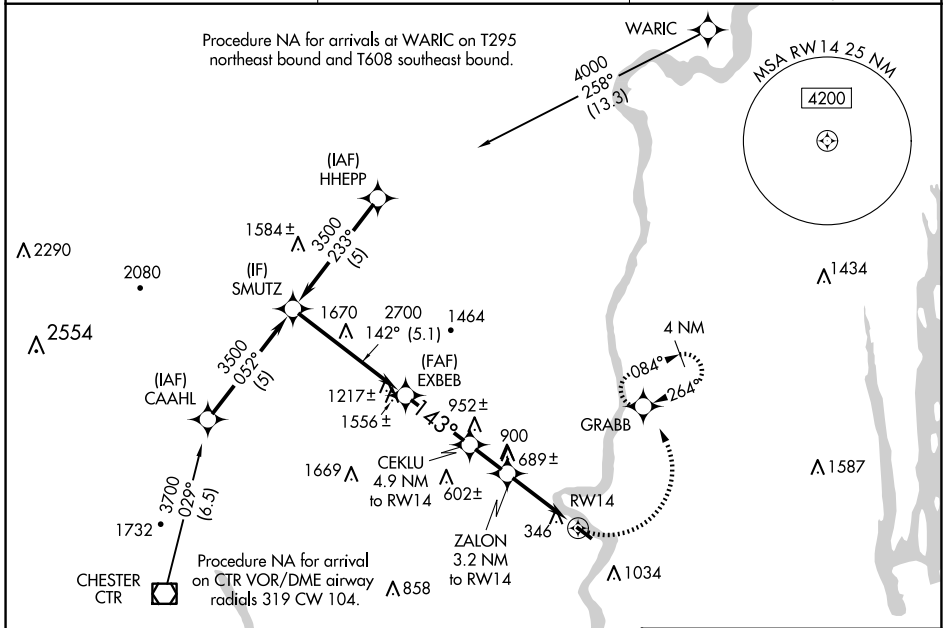
▼ Procedure NA at night. Obtain local altimeter setting on CTAF; when not received, use Windsor Locks altimeter setting. Rwy 14 helicopter visibility reduction below 1 SM NA.

MISSED APPROACH: Climbing left turn to 3000 direct GRABB and hold, continue climb-in-hold to 3000.

BRADLEY APP CON
125.35 281.5

CLNC DEL
133.6

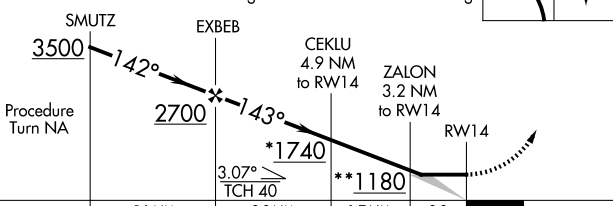
UNICOM
122.7 (CTAF)



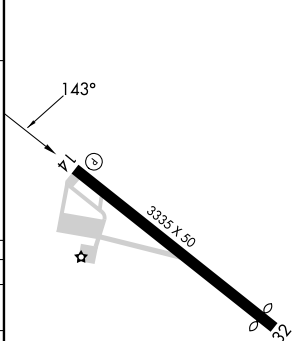
NE-1, 23 JAN 2025 to 20 FEB 2025

NE-1, 23 JAN 2025 to 20 FEB 2025

VGSI and descent angles not coincident (VGSI Angle 4.50/TCH 60).
* 1820 when using Windsor Locks altimeter setting.
** 1260 when using Windsor Locks altimeter setting.



ELEV	121	TDZE	121
------	-----	------	-----



CATEGORY	A	B	C	D
RNAV MDA	940-1 819 (900-1)	940-1¼ 819 (900-1¼)		NA
CIRCLING	940-1¼ 819 (900-1¼)	1400-1½ 1279 (1300-1½)		NA
WINDSOR LOCKS ALTIMETER SETTING MINIMUMS				
RNAV MDA	1020-1¼ 899 (900-1¼)	899 (900-1¼)		NA
CIRCLING	1020-1¼ 899 (900-1¼)	1460-1½ 1339 (1400-1½)		NA

MIRL Rwy 14-32