

LOC/DME I-ISM 109.75 Chan 34 (Y)	APP CRS 153°	Rwy Idg TDZE Apt Elev	6001 82 82
--	------------------------	-----------------------------	---------------------------------------

ILS or LOC RWY 15

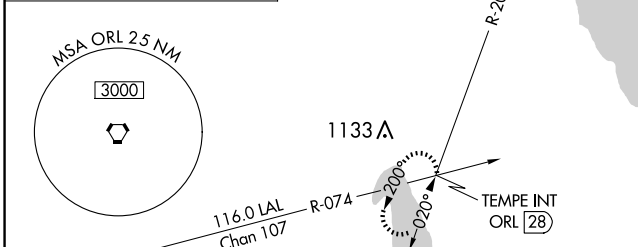
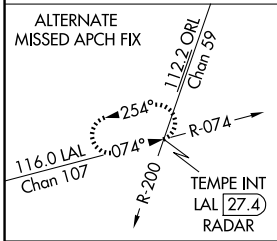
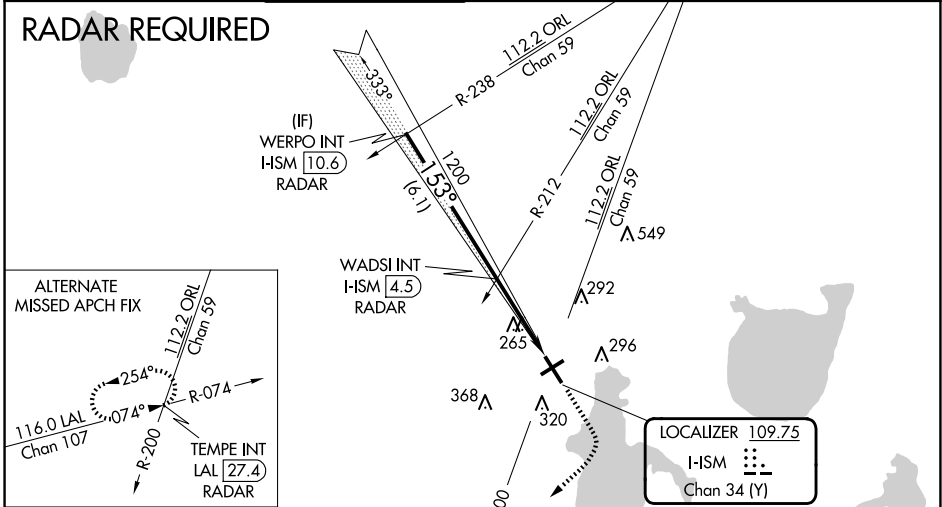
KISSIMMEE GATEWAY (ISM)

⚠ VDP NA with Orlando Intl altimeter setting. When local altimeter setting not received, use Orlando Intl altimeter setting and increase all DA to 309 feet, and all MDA 40 feet; increase Circling Cat C visibility 1/2 SM.

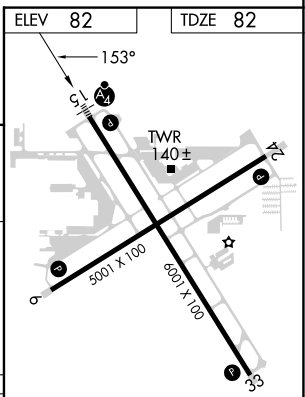
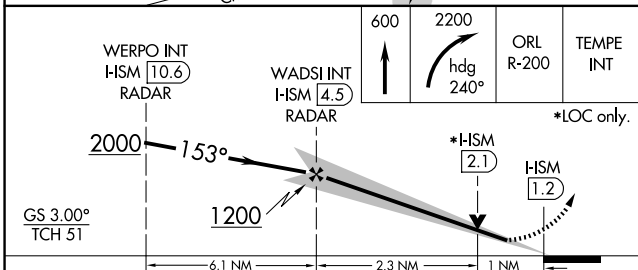
MALSF **MISSED APPROACH:** Climb to 600 then climbing right turn to 2200 on heading 240° and ORL VORTAC R-200 to TEMPE INT/ORL 28 DME and hold.

ATIS 128.775	ORLANDO APP CON 119.4 351.9	KISSIMMEE TOWER * 124.45 (CTAF) 0	CLNC DEL 121.7	CLNC DEL 123.95 (when twr closed)	GND CON 121.7	UNICOM 122.95
------------------------	---------------------------------------	--	--------------------------	--	-------------------------	-------------------------

RADAR REQUIRED



LOCALIZER 109.75
I-ISM
Chan 34 (Y)



WERPO INT I-ISM 10.6 RADAR	WADSI INT I-ISM 4.5 RADAR	600	2200	ORL R-200	TEMPE INT
2000 — 153°		hdg 240°		*LOC only.	
GS 3.00° TCH 51		*I-ISM 2.1		H-ISM 1.2	
6.1 NM		2.3 NM		1 NM	
CATEGORY	A	B	C	D	
S-ILS 15	282-3/4 200 (200-3/4)				
S-LOC 15	440-3/4 358 (400-3/4)		440-1/4 358 (400-1/4)		
CIRCLING	680-1 598 (600-1)	680-1 1/2 598 (600-1 1/2)		700-2 618 (700-2)	

REIL Rwy 6, 24 and 33 **0**
MIRL Rwy 15-33 and 6-24 **0**

FAF to MAP 3.3 NM

Knots	60	90	120	150	180
Min:Sec	3:18	2:12	1:39	1:19	1:06

SE-3, 23 JAN 2025 to 20 FEB 2025

SE-3, 23 JAN 2025 to 20 FEB 2025