

WAAS CH 49144 W14A	APP CRS 140°	Rwy Idg TDZE Apt Elev	6000 181 187
--	------------------------	-----------------------------	---

RNAV (GPS) RWY 14

STATESBORO-BULLOCH COUNTY (TBR)

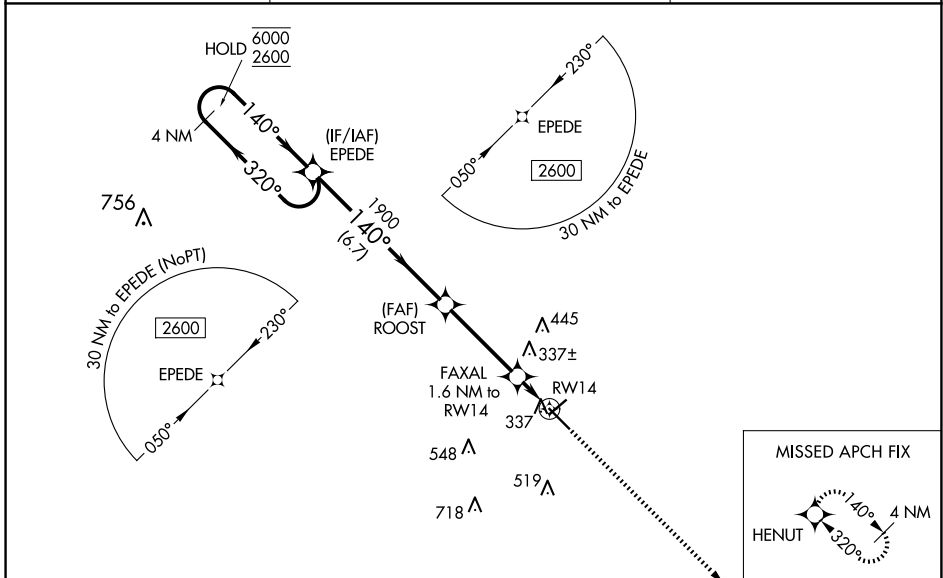
RNP APCH-GPS.

⚠ Circling to Rwy 6/24 NA at night. Baro-VNAV and VDP NA when using Sylvania altimeter setting.

⚠ Rwy 14 helicopter visibility reduction below $\frac{3}{4}$ SM NA. For uncompensated Baro-VNAV systems, LNAV/VNAV NA below -15°C or above 54°C. When local altimeter setting not received, use Sylvania altimeter setting and increase LPV DA to 525 feet and all visibilities $\frac{1}{8}$ SM. Increase LNAV/VNAV DA to 547 feet; increase all MDAs 40 feet and LNAV visibility Cat C/D $\frac{1}{4}$ SM, and Circling visibility Cat C $\frac{1}{4}$ SM.

MISSED APPROACH: Climb to 2600 direct HENUT and hold.

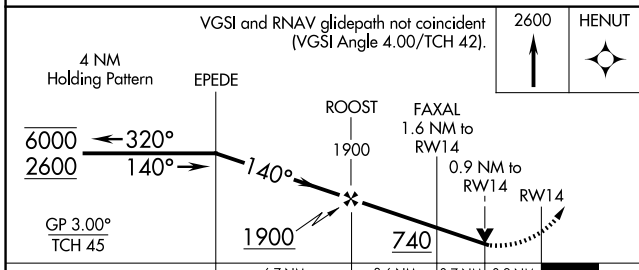
AWOS-3 119.025	SAVANNAH APP CON* 118.4 354.0	UNICOM 122.725 (CTAF)
--------------------------	---	---------------------------------



SE-4, 23 JAN 2025 to 20 FEB 2025

SE-4, 23 JAN 2025 to 20 FEB 2025

ELEV 187	TDZE 181
----------	----------



CATEGORY	A	B	C	D
LPV DA		496- $\frac{7}{8}$	315 (400- $\frac{7}{8}$)	
LNAV/VNAV DA		518-1	337 (400-1)	
LNAV MDA	600-1	419 (500-1)	600-1 $\frac{1}{8}$	419 (500-1 $\frac{1}{8}$)
CIRCLING	640-1 453 (500-1)	740-1 553 (600-1)	840-1 $\frac{3}{4}$ 653 (700-1 $\frac{3}{4}$)	860-2 $\frac{1}{4}$ 673 (700-2 $\frac{1}{4}$)

