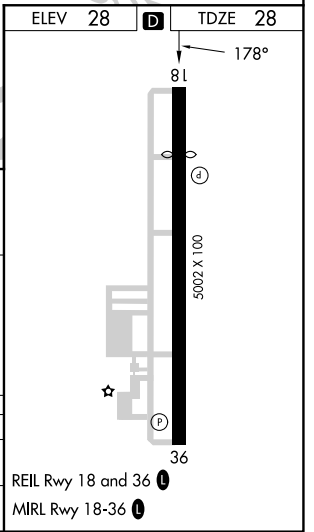
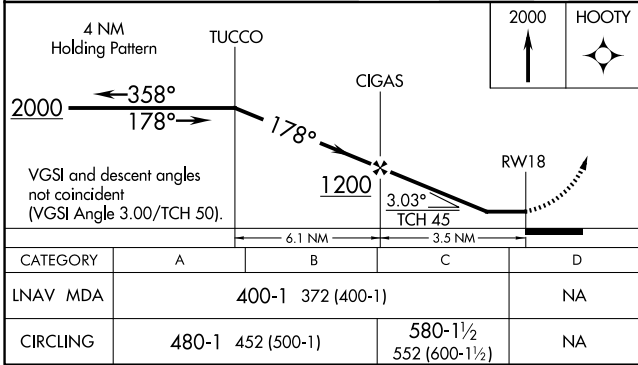
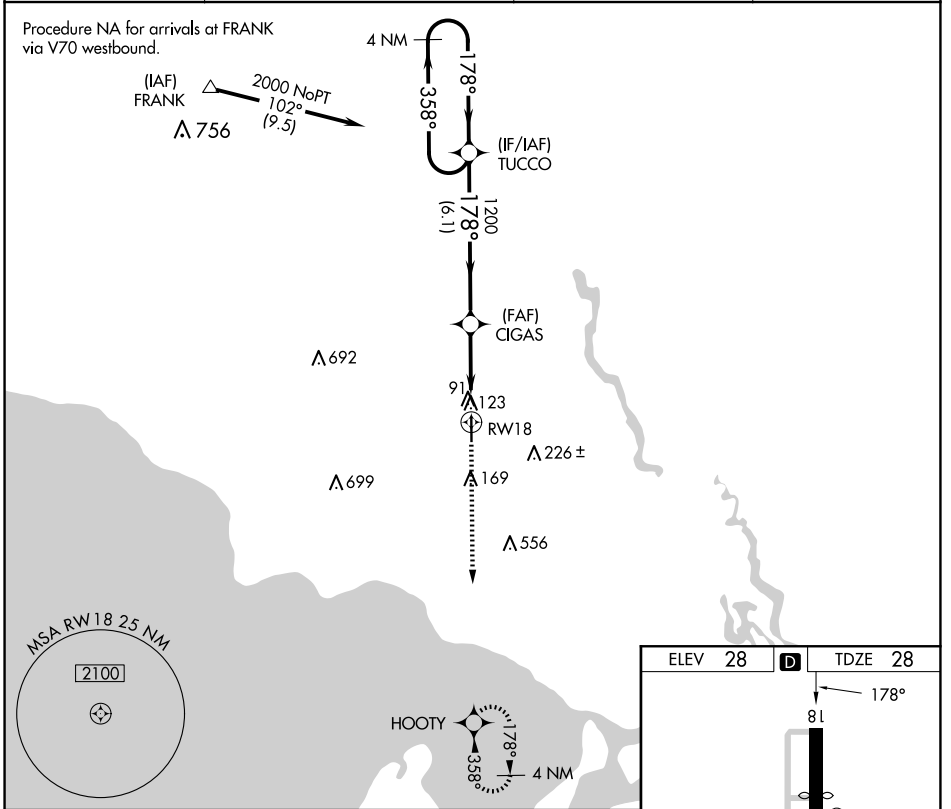


APP CRS	Rwy Idg	<b>4058</b>
<b>178°</b>	TDZE	<b>28</b>
	Apt Elev	<b>28</b>

# RNAV (GPS) RWY 18

SLIDELL (ASD)

RNP APCH.		MISSED APPROACH: Climb to 2000 direct HOOTY and hold.	
NA Helicopter visibility reduction below 1 SM NA.			
ASOS	NEW ORLEANS APP CON	UNICOM	GCO
<b>132.475</b>	<b>133.15 290.3</b>	<b>122.8 (CTAF) 0</b>	<b>135.075</b>



SC-4, 23 JAN 2025 to 20 FEB 2025

SC-4, 23 JAN 2025 to 20 FEB 2025