

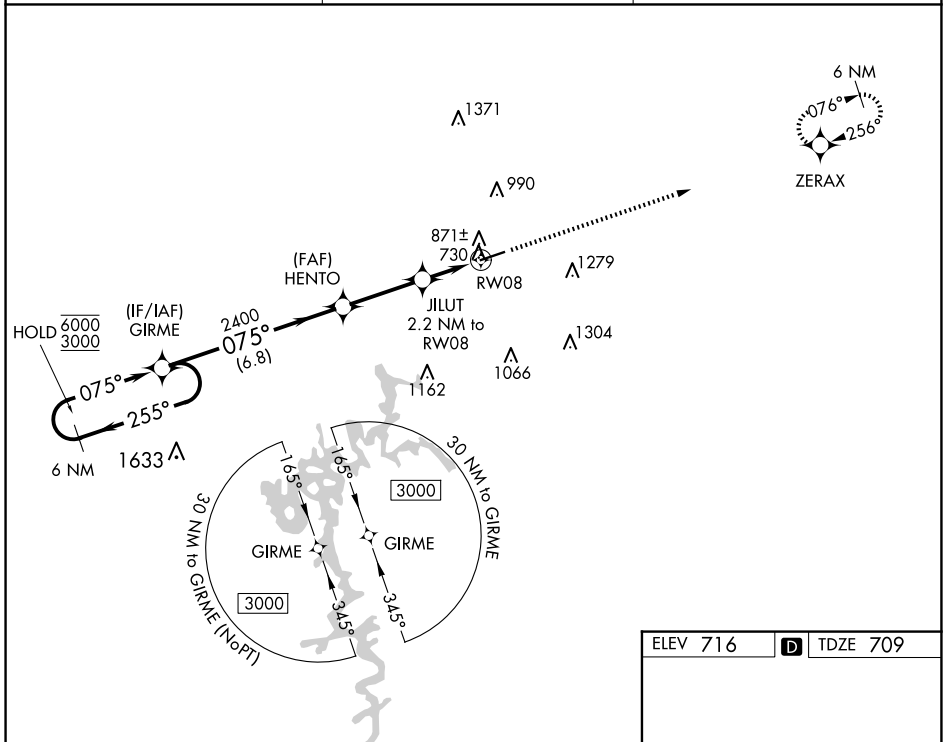
WAAS CH 77607 W08A	APP CRS 075°	Rwy Idg TDZE Apt Elev	5000 709 716
--	------------------------	-----------------------------	---

RNAV (GPS) RWY 8

GLASGOW MUNI (GLW)

RNP APCH.	MISSED APPROACH: Climb to 3000 direct ZERAX and hold.
<p>▽ ▲ For uncompensated Baro-VNAV systems, LNAV/VNAV NA below -16°C or above 54°C.</p>	

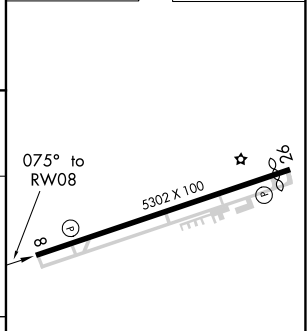
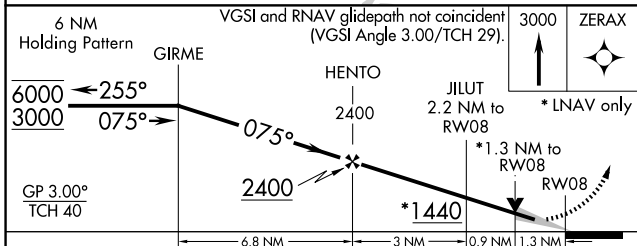
AWOS-3 118.525	MEMPHIS CENTER 132.9 290.3	UNICOM 122.8 (CTAF) ①
--------------------------	--------------------------------------	--



SE-1, 23 JAN 2025 to 20 FEB 2025

SE-1, 23 JAN 2025 to 20 FEB 2025

ELEV 716	D	TDZE 709
----------	----------	----------



CATEGORY	A	B	C	D
LPV DA	971-1		262 (300-1)	
LNAV/VNAV DA	1125-1 $\frac{3}{8}$		416 (500-1 $\frac{3}{8}$)	
LNAV MDA	1140-1	431 (500-1)	1140-1 $\frac{1}{4}$	431 (500-1 $\frac{1}{4}$)

MIRL Rwy 8-26 **①**
REIL Rwy 8 and 26 **①**