

WAAS CH 93922 W17A	APP CRS 172°	Rwy Idg TDZE Apt Elev	4305 1616 1616
----------------------------------------	------------------------	-----------------------------	-------------------------------------------

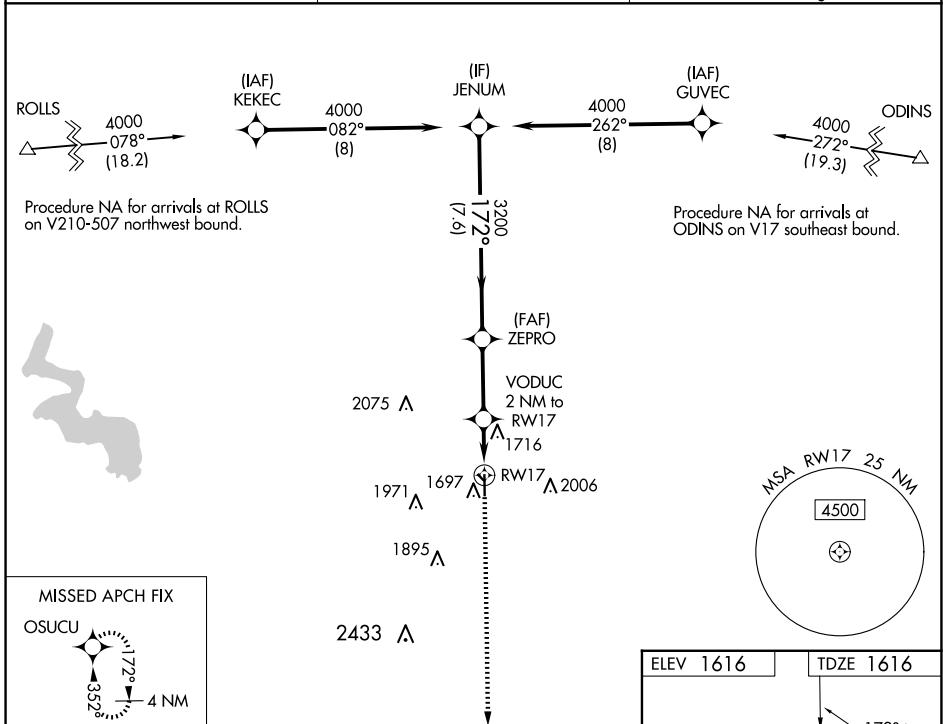
RNAV (GPS) RWY 17

CLINTON RGNL (CLK)

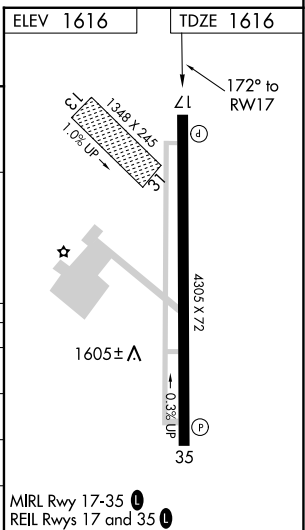
⚠ DME/DME RNP-0.3 NA. For uncompensated Baro-VNAV systems, LNAV/VNAV NA below -12°C (11°F) or above 54°C (130°F). Circling NA to Rwy 13 and 31. When local altimeter setting not received, use Weatherford altimeter setting; Increase DA to 1898 and all visibilities ½ mile; increase all MDA 40 feet and visibility Cat C ¼ mile. Baro-VNAV and VDP NA when using Weatherford altimeter setting.

MISSED APPROACH: Climb to 4000 direct OSUCU and hold.

AWOS-3 119.225	FORT WORTH CENTER 128.4 269.37	UNICOM 122.8 (CTAF) 0
--------------------------	------------------------------------------	---------------------------------



JENUM		ZEPRO		VODUC 2 NM to RW17		4000 OSUCU	
4000		3200		*2280		*LNAV only.	
GP 3.00° TCH 40		3200		*1 NM to RW17		RW17	
7.6 NM		2.9 NM		1 NM		1 NM	
CATEGORY	A	B	C	D			
LPV DA	1866-7/8	250 (300-7/8)			NA		
LNAV/VNAV DA	1866-7/8	250 (300-7/8)			NA		
LNAV MDA	1980-1	364 (400-1)			NA		
C CIRCLING	2100-1 484 (500-1)	2220-1 604 (700-1)	2320-2 704 (800-2)		NA		



SC-1, 23 JAN 2025 to 20 FEB 2025

SC-1, 23 JAN 2025 to 20 FEB 2025