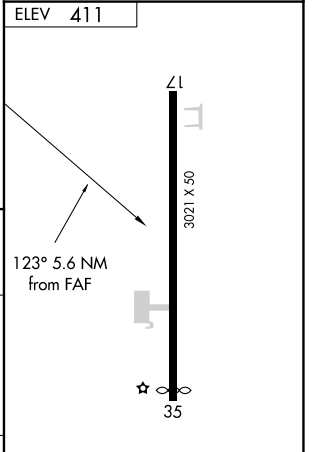
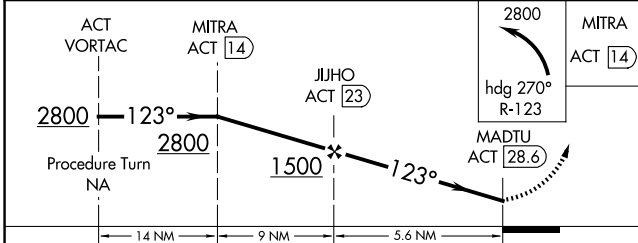
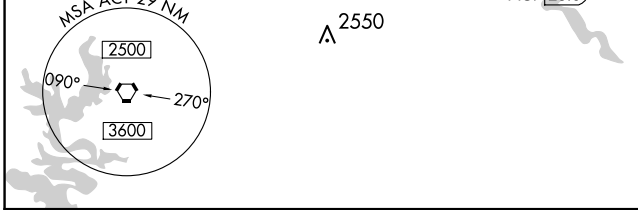
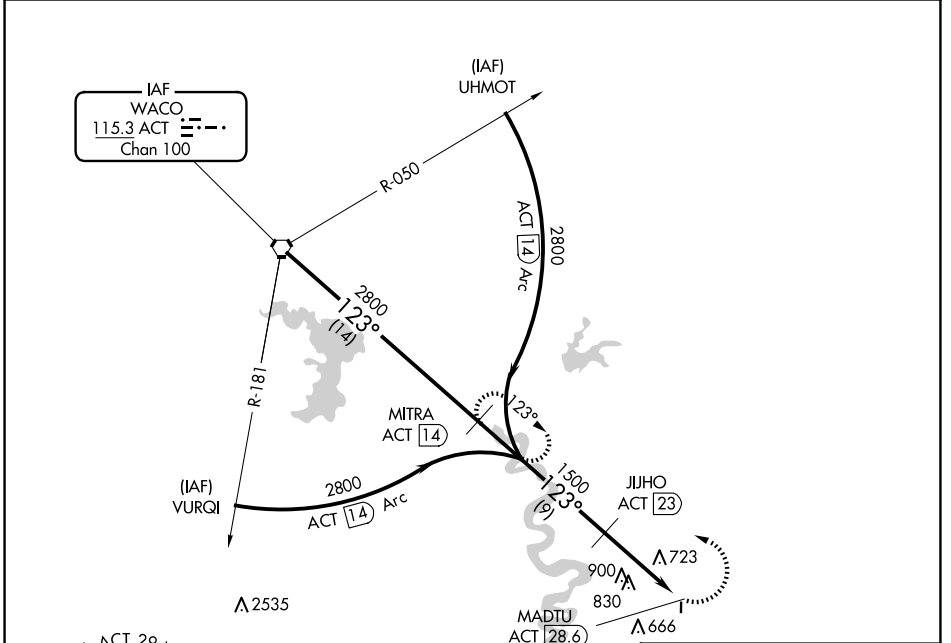


VOR ACT 115.3 Chan 100	APP CRS 123°	Rwy Idg TDZE Apt Elev N/A N/A 411
--	------------------------	---

VOR/DME or GPS-A

MARLIN (T15)

<p>▼ Use Waco Rgnl altimeter setting.</p> <p>▲ NA</p>	<p>MISSED APPROACH: Climbing left turn to 2800 via heading 270° and R-123 to MITRA/14 DME and hold.</p>
<p>WACO APP CON ★</p> <p>127.65 352.0</p>	<p>CTAF</p> <p>122.9</p>



CATEGORY	A	B	C	D
CIRCLING	1280-1 869 (900-1)	1280-1¼ 869 (900-1¼)	NA	NA

IURL Rwy 17-35

SC-5, 23 JAN 2025 to 20 FEB 2025

SC-5, 23 JAN 2025 to 20 FEB 2025