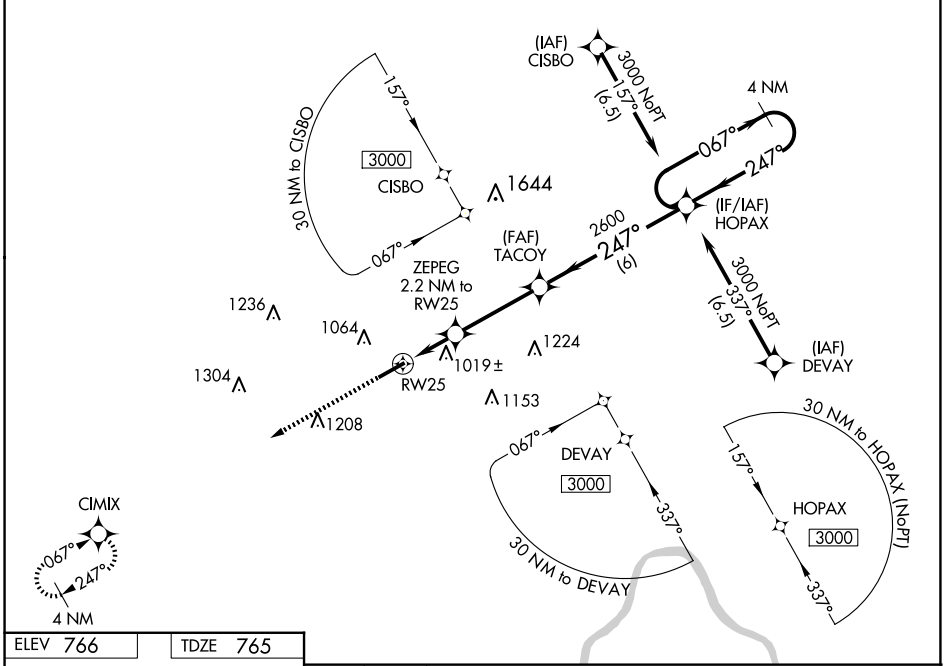


WAAS CH 90316 W25A	APP CRS 247°	Rwy ldg 5600 TDZE 765 Apt Elev 766
--	------------------------	---

RNAV (GPS) RWY 25

OHIO UNIVERSITY (UNI)

<p>⚠ For uncompensated Baro-VNAV systems, LNAV/VNAV NA below -16°C (4°F) or above 54°C (130°F). DME/DME RNP-0.3 NA.</p>			<p>MISSED APPROACH: Climb to 3000 direct CIMIX and hold.</p>
AWOS-3 128.325	HUNTINGTON APP CON 120.95 270.1	CLNC DEL 120.95	UNICOM 123.075 (CTAF) 0



EC-2, 23 JAN 2025 to 20 FEB 2025

EC-2, 23 JAN 2025 to 20 FEB 2025

ELEV 766	TDZE 765
----------	----------

	3000 ↑ CIMIX		HOPAX 4 NM Holding Pattern		
* LNAV only		TACOY 2600	247°	← 247°	3000
	ZEPEG 2.2 NM to RW25		2600		
	* 1.5 NM to RW25		1500*		
	RW25		2600		
	1.5 NM	0.7 NM	3.4 NM	6 NM	
			GP 3.00°		TCH 49

CATEGORY	A	B	C	D
LPV DA		965-3/4	200 (200-3/4)	
LNAV/VNAV DA		1356-2	591 (600-2)	
LNAV MDA	1280-1	515 (600-1)	1280-1 3/8	515 (600-1 3/8)
C CIRCLING	1380-1	614 (700-1)	1420-1 3/4 654 (700-1 3/4)	1480-2 1/4 714 (800-2 1/4)