

DALLAS THREE DEPARTURE
(DALL3.TTT) 25ANZ4

DENTON, TEXAS
DENTON ENTERPRISE (DTON)

LONE STAR DEP CON
118.1 306.95
CLNC DEL
123.95
GND CON
123.95
DENTON TOWER*
119.95 (CTAF)

RADAR and DME required.

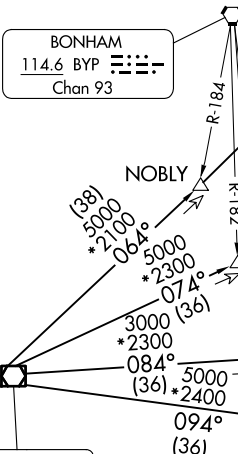
TAKEOFF MINIMUMS
Rwys 18L/R, 36L/R: Standard.

TOP ALTITUDE:
ASSIGNED BY ATC

BONHAM
114.6 BYP
Chan 93



MAVERICK
113.1 TTT
Chan 78



GREGG COUNTY
112.9 GGG
Chan 76

FL230
*2100
055°
(117) R-235

ORTRO

FL230
*2000
064°
(75)

COBUG

7500
*2100
064°
(79)

NOBLY

TRISS

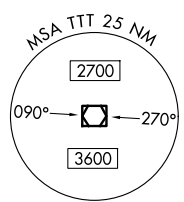
SOLDO

CLARE

POTEN

TEKBE

TEXARKANA
116.3 TXK
Chan 110



NOTE: BELCHER Transition: For aircraft inbound to the JAN, MLU, and SHV terminal areas only.
NOTE: SOLDO Transition: ATC assigned.

BELCHER
117.4 EIC
Chan 121



(DALL3.TTT) 24305
DALLAS THREE DEPARTURE

AL-5866 (FAA)

DENTON, TEXAS
DENTON ENTERPRISE (DTON)

(CONTINUED ON FOLLOWING PAGE)

NOTE: Chart not to scale.

DALLAS THREE DEPARTURE

DENTON, TEXAS



DEPARTURE ROUTE DESCRIPTION

When entering controlled airspace, fly assigned heading for RADAR vectors to appropriate route. Maintain ATC assigned altitude.

BELCHER TRANSITION (DALL3.EIC): From over TTT VOR/DME on TTT R-094 to POTEN, then on EIC R-259 to EIC VORTAC.

LITTLE ROCK TRANSITION (DALL3.LIT): From over TTT VOR/DME on TTT R-064 to ORTRO, then on LIT R-235 to LIT VORTAC.

SOLDO TRANSITION (DALL3.SOLDO): From over TTT VOR/DME on TTT R-084 to SOLDO.

TEXARKANA TRANSITION (DALL3.TXK): From over TTT VOR/DME on TTT R-074 to SHERO, then on TXK R-244 to TXK VORTAC.

SC-2, 23 JAN 2025 to 20 FEB 2025

SC-2, 23 JAN 2025 to 20 FEB 2025