

GARLAND FIVE DEPARTURE  
(GARLS.TT) 25JAN24

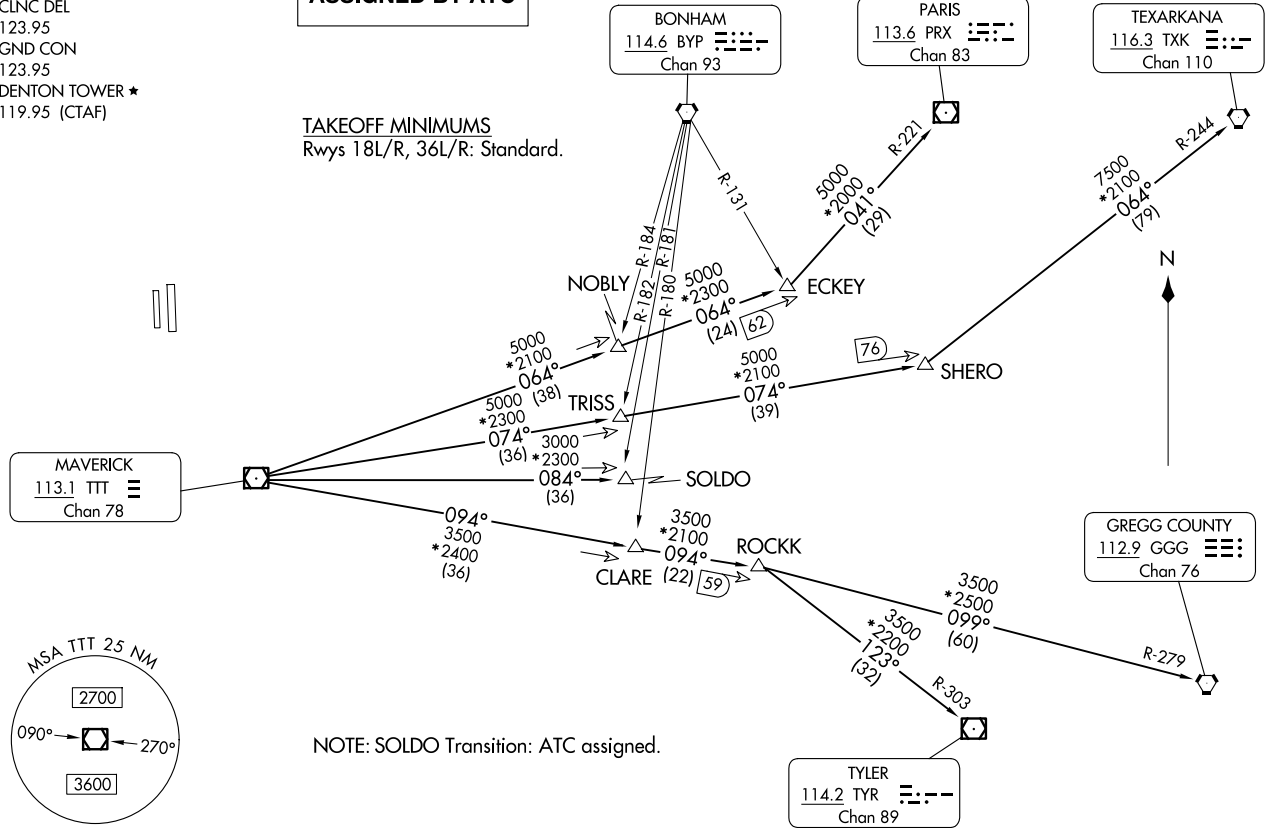
DENTON, TEXAS  
DENTON ENTERPRISE (DIO)  
(DENTON.TT) 25JAN24

LONE STAR DEP CON  
118.1 306.95  
CLNC DEL  
123.95  
GND CON  
123.95  
DENTON TOWER ★  
119.95 (CTAF)

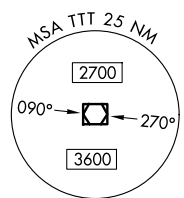
**TOP ALTITUDE:  
ASSIGNED BY ATC**

RADAR and DME required.

TAKEOFF MINIMUMS  
Rwys 18L/R, 36L/R: Standard.



NOTE: SOLDO Transition: ATC assigned.



NOTE: Chart not to scale.

(CONTINUED ON FOLLOWING PAGE)

(GARLS.TT) 24305  
GARLAND FIVE DEPARTURE

AL-5866 (FAA)  
DENTON ENTERPRISE (DIO)  
DENTON, TEXAS

# GARLAND FIVE DEPARTURE

DENTON, TEXAS



## DEPARTURE ROUTE DESCRIPTION

When entering controlled airspace, fly assigned heading for RADAR vectors to appropriate route. Maintain ATC assigned altitude.

GREGG COUNTY TRANSITION (GARL5.GGG): From over TTT VOR/DME on TTT R-094 to ROCKK, then on GGG R-279 to GGG VORTAC.

PARIS TRANSITION (GARL5.PRX): From over TTT VOR/DME on TTT R-064 to ECKEY, then on PRX R-221 to PRX VOR/DME.

SOLDO TRANSITION (GARL5.SOLDO): From over TTT VOR/DME on TTT R-084 to SOLDO.

TEXARKANA TRANSITION (GARL5.TXK): From over TTT VOR/DME on TTT R-074 to SHERO, then on TXK R-244 to TXK VORTAC.

TYLER TRANSITION (GARL5.TYR): From over TTT VOR/DME on TTT R-094 to ROCKK, then on TYR R-303 to TYR VOR/DME.

SC-2, 23 JAN 2025 to 20 FEB 2025

SC-2, 23 JAN 2025 to 20 FEB 2025