

KINGDOM FOUR DEPARTURE  
(KING4.TTT) 251AN24

RADAR and DME required.

**TOP ALTITUDE:  
ASSIGNED BY ATC**

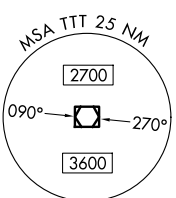
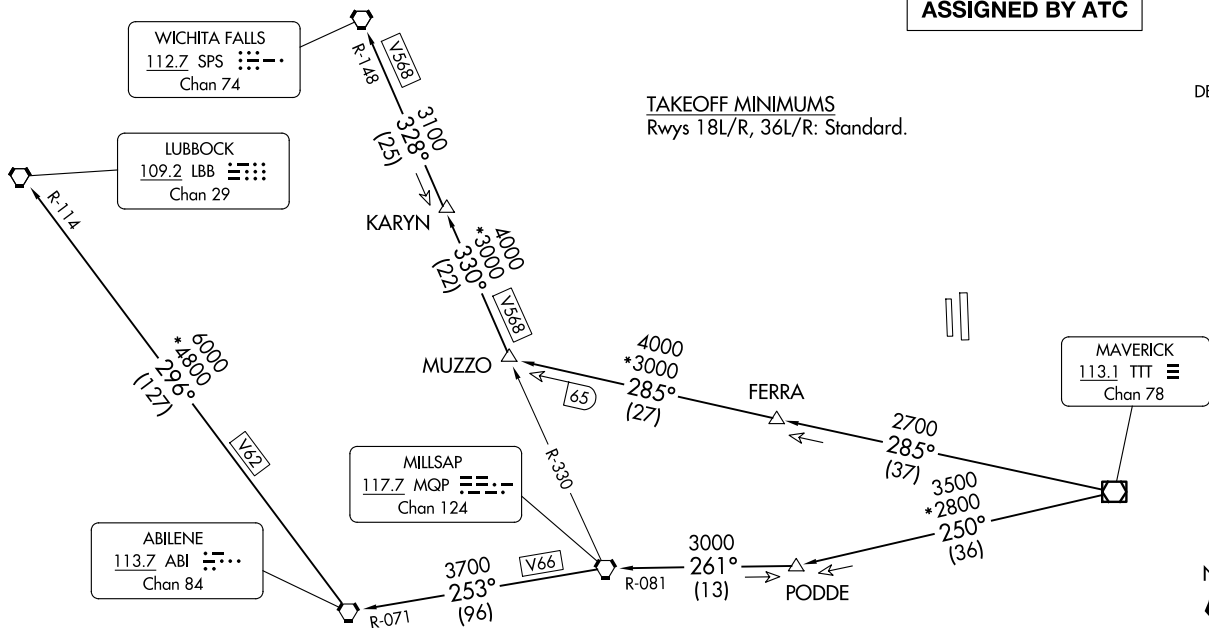
LONE STAR DEP CON 118.1 306.95  
CLNC DEL 123.95  
GND CON 123.95  
DENTON TOWER\* 119.95 (CTAF)

(KING4.TTT) 24305  
KINGDOM FOUR DEPARTURE

AL-5846 (FAA)

DENTON ENTERPRISE (DTE)  
DENTON, TEXAS

TAKEOFF MINIMUMS  
Rwys 18L/R, 36L/R: Standard.



- NOTE: LUBBOCK Transition: For all aircraft overflying the MQP VORTAC westbound or direct.
- NOTE: MILLSAP Transition: For all aircraft overflying the MQP VORTAC westbound or direct.
- NOTE: PODDE Transition: ATC assigned.
- NOTE: WICHITA FALLS Transition: For all aircraft landing within the Wichita Falls terminal area or overflying the SPS VORTAC.
- NOTE: For all aircraft requesting 17000 and below.

NOTE: Chart not to scale.

(CONTINUED ON FOLLOWING PAGE)

DENTON, TEXAS  
DENTON ENTERPRISE (DTE)

# KINGDOM FOUR DEPARTURE



## DEPARTURE ROUTE DESCRIPTION

When entering controlled airspace, fly assigned heading for RADAR vectors to appropriate route. Maintain ATC assigned altitude.

LUBBOCK TRANSITION (KING4.LBB): From over TTT VOR/DME on TTT R-250 to PODDE, then on MQP R-081 to MQP VORTAC, then on MQP R-253 and ABI R-071 to ABI VORTAC, then on ABI R-296 and LBB R-114 to LBB VORTAC.

MILLSAP TRANSITION (KING4.MQP): From over TTT VOR/DME on TTT R-250 to PODDE, then on MQP R-081 to MQP VORTAC.

PODDE TRANSITION (KING4.PODDE): From over TTT VOR/DME on TTT R-250 to PODDE.

WICHITA FALLS TRANSITION (KING4.SPS): From over TTT VOR/DME on TTT R-285 to MUZZO, then on MQP R-330 and SPS R-148 to KARYN, then on SPS R-148 to SPS VORTAC.

SC-2, 23 JAN 2025 to 20 FEB 2025

SC-2, 23 JAN 2025 to 20 FEB 2025