

APP CRS	Rwy Idg	3881
262°	TDZE	53
	Apt Elev	53

RNAV (GPS) RWY 26

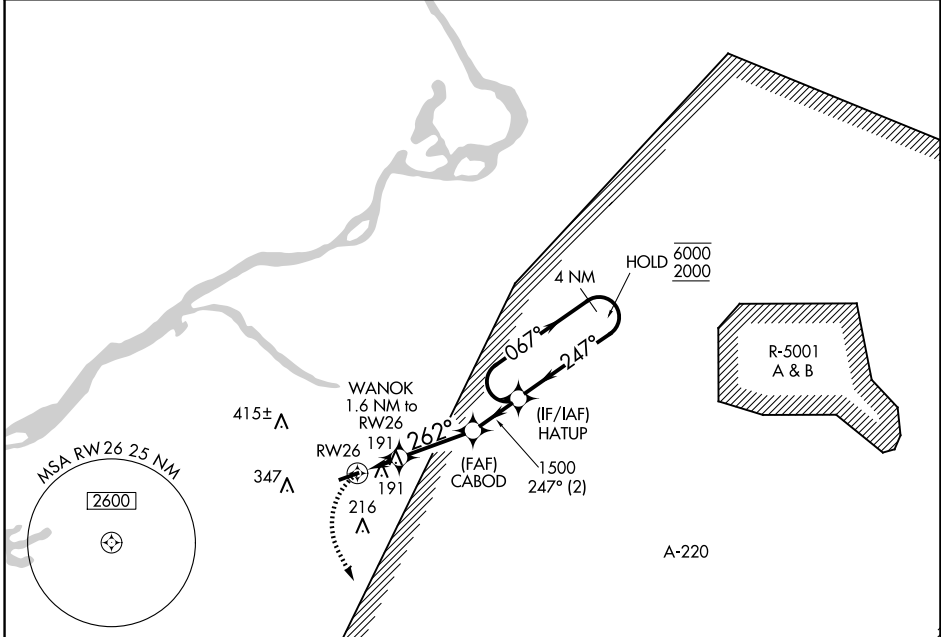
SOUTH JERSEY RGNL (VAY)

RNP APCH.

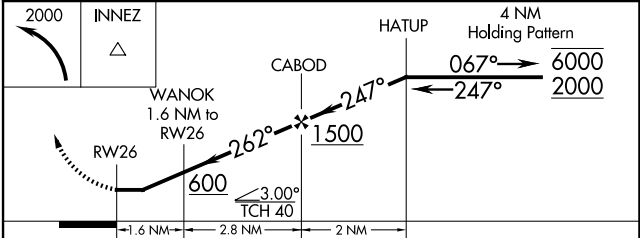
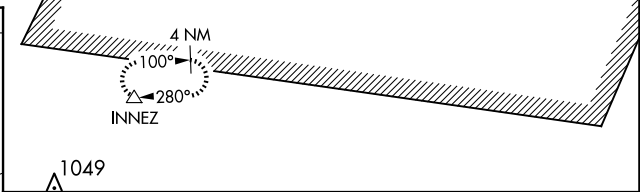
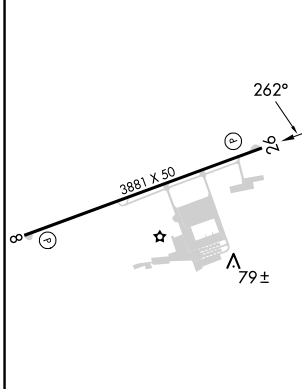
Rwy 26 helicopter visibility reduction below 1 SM NA. Procedure NA at night.

MISSED APPROACH:
Climbing left turn to 2000
direct INNEZ and hold.

ASOS	MC GUIRE APP CON	UNICOM	123.3
119.325	126.475 363.8	122.8 (CTAF)	0



ELEV 53	TDZE 53
---------	---------



CATEGORY	A	B	C	D
LNAV MDA	480-1	427 (500-1)	NA	
CIRCLING	520-1	540-1	NA	
	467 (500-1)	487 (500-1)		

MIRL Rwy 8-26
REIL Rwy 8 and 26

NE-2, 23 JAN 2025 to 20 FEB 2025

NE-2, 23 JAN 2025 to 20 FEB 2025