

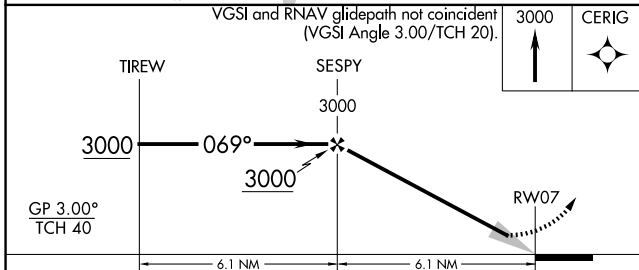
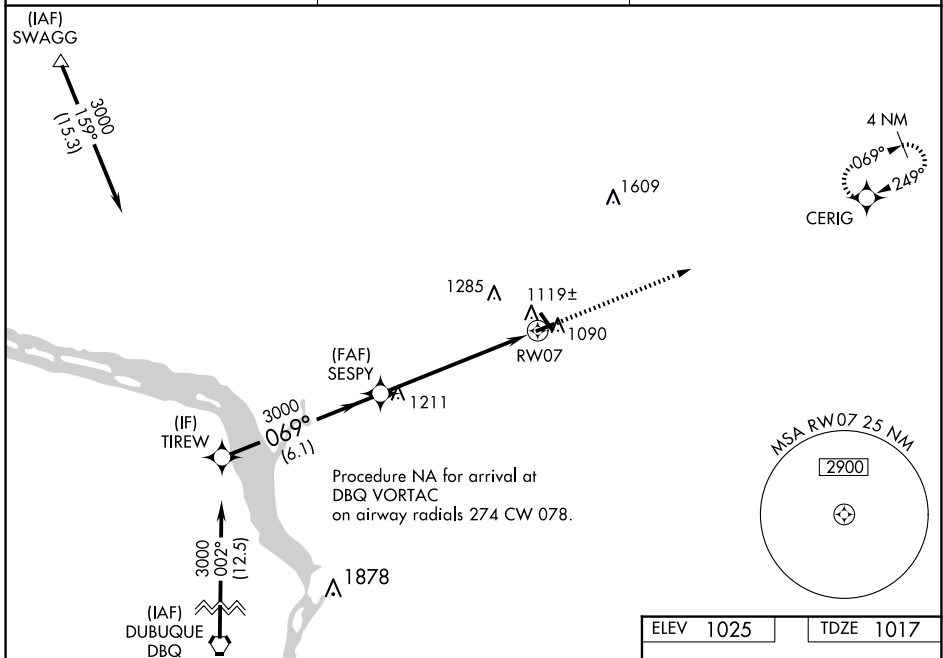
WAAS CH 82315 W07A	APP CRS 069°	Rwy Idg TDZE Apt Elev 3600 1017 1025
----------------------------------------	------------------------	--------------------------------------------------------------------------

RNAV (GPS) RWY 7

PLATTEVILLE MUNI (PVB)

RNP APCH - GPS.	<p>MISSED APPROACH: Climb to 3000 direct CERIG and hold.</p>
<p>▼ For uncompensated Baro-VNAV systems, LNAV/VNAV NA below -17°C or above 54°C. Straight-in Rwy 7 NA at night, Circling Rwy 7, 25 NA at night. Rwy 7 helicopter visibility reduction below 1 SM NA.</p>	

AWOS-3 120.575	CHICAGO CENTER 133.95 281.4	UNICOM 122.7 (CTAF) 0
--------------------------	---------------------------------------	---------------------------------



ELEV 1025	TDZE 1017
-----------	-----------

Diagram showing the runway layout for Platteville Muni (PVB). Key features include:
 - RWY 7: 4000 x 75 ft, MDA 1480-1 ft.
 - RWY 25: 3600 x 75 ft, MDA 1600-1 ft.
 - RWY 15: 3600 x 75 ft, MDA 1480-1 ft.
 - RWY 33: 3600 x 75 ft, MDA 1600-1 ft.
 - REIL (Runway End Identifier Lights) on RWys 15 and 33.
 - MRL (Middle Row Lights) on RWys 7-25 and 15-33.

CATEGORY	A	B	C	D
LPV DA	1284-1	267 (300-1)		NA
LNAV/VNAV DA	1407-1½	390 (400-1½)		NA
LNAV MDA	1480-1	463 (500-1)		NA
CIRCLING	1480-1 455 (500-1)	1600-1 575 (600-1)	1600-1½ 575 (600-1½)	NA

EC-3, 23 JAN 2025 to 20 FEB 2025

EC-3, 23 JAN 2025 to 20 FEB 2025